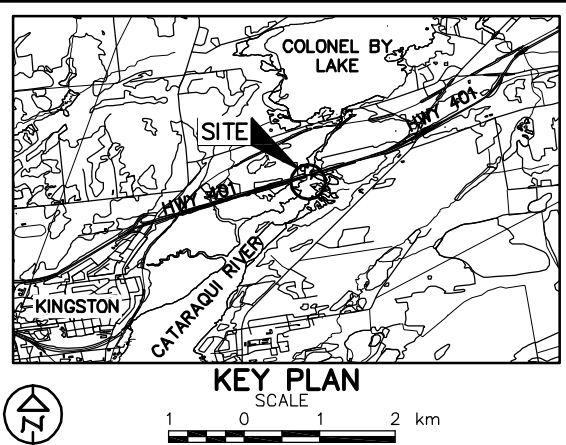


CONT No.  
GWP No. 80-99-01

SHEET

CATARAQUI RIVER BRIDGE  
SITE 7-70  
BOREHOLE LOCATIONS AND SOIL STRATA

Golder Associates Ltd.  
OTTAWA, ONTARIO, CANADA



**LEGEND**

- Borehole - Previous Investigation
- Penetration Test - Previous Investigation
- Seal
- Piezometer
- Standard Penetration Test Value
- Blows/0.3m unless otherwise stated (Std. Pen. Test, 475 j/blow)
- WL upon completion of or during drilling

No.	ELEVATION	NORTHING	EASTING
BH2	76.1	4904873.0	308918.3
BH3	75.1	4904843.8	308927.8
BH5	74.6	4904849.9	308945.7
BH6	75.1	4904896.6	308989.2
BH7	75.0	4904868.4	308994.7
BH8	75.6	4904903.5	309010.0
BH9	75.9	4904874.2	309019.4
BH12	75.1	4904882.6	308995.3
PT13	75.1	4904870.0	309006.3
PT14	75.6	4904874.4	308990.0
PT15	75.1	4904889.2	308990.6
E23	76.6	4904814.1	308903.4
E24	75.1	4904820.5	308930.1

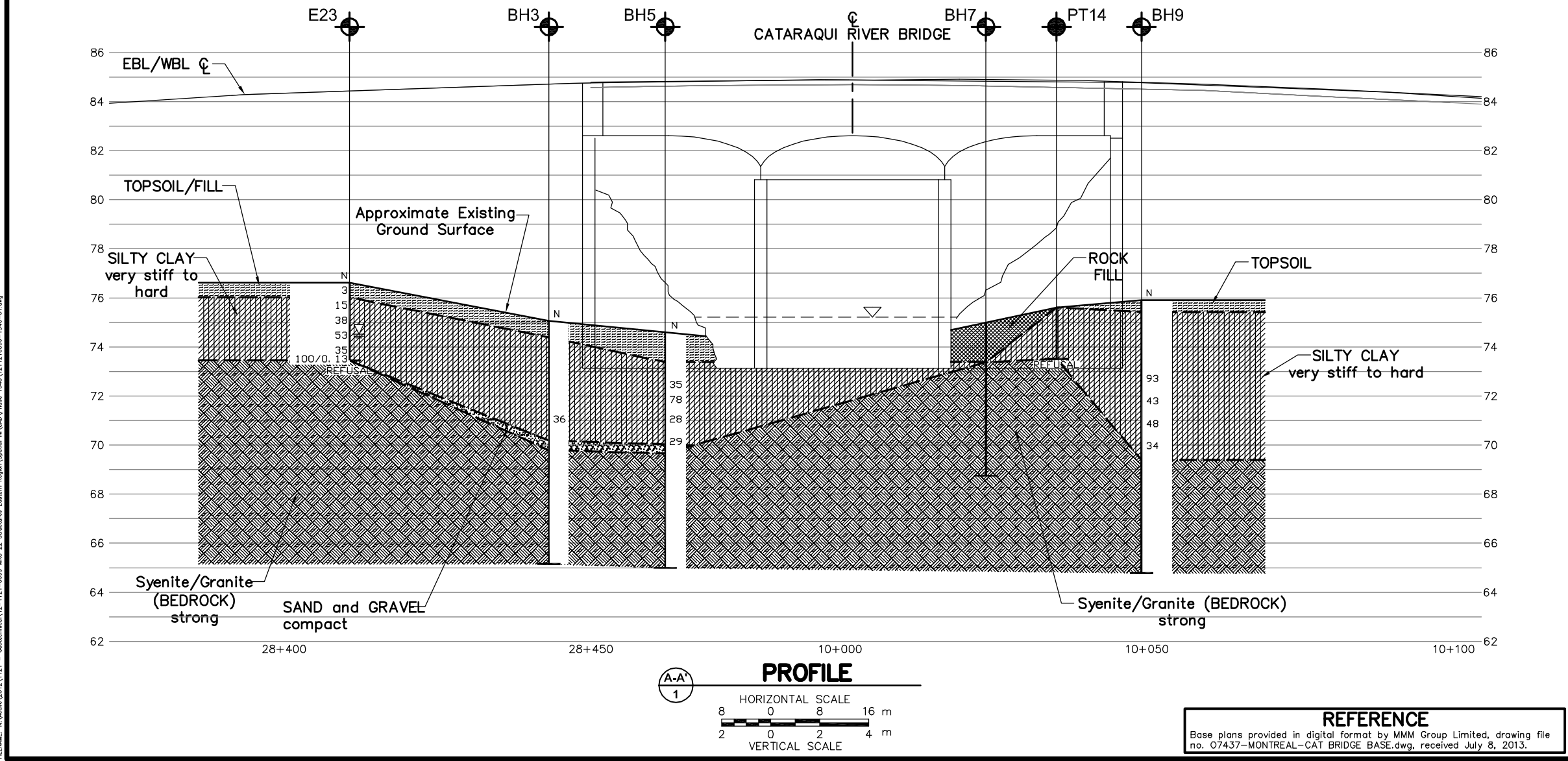
**NOTES**

This drawing is for subsurface information only. The proposed structure details/works are shown for illustration purposes only and may not be consistent with the final design configuration as shown elsewhere in the Contracts Documents.

The boundaries between soil strata have been established only at borehole locations. Between boreholes the boundaries are assumed from geological evidence.

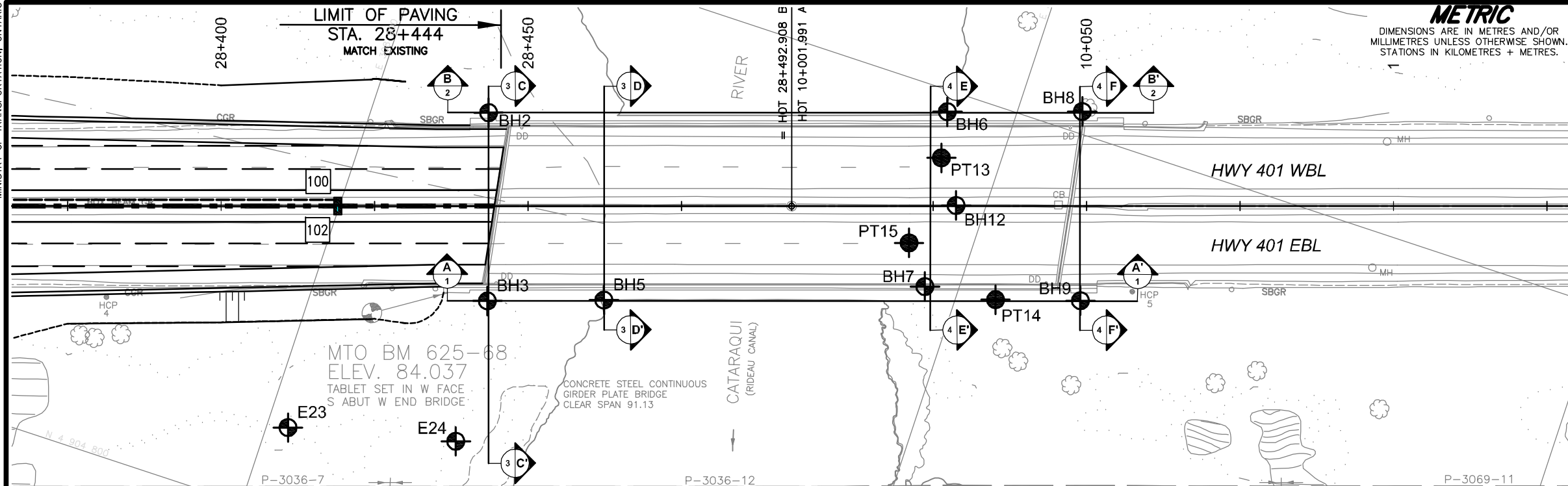
The complete Foundation Investigation and Design Report for this project and other related documents may be examined at the Materials Engineering and Research Office, Downsview. Information contained in this report and related documents is specifically excluded in accordance with Section GC 2.01 of OPS General Conditions.

NO.	DATE	BY	REVISION
Geocres No. 31C-215			
HWY. 401	PROJECT NO. 12-1121-0099-1340		
SUBM'D. MJK	CHKD. FJH	DATE: Nov. 2013	SITE: 7-70
DRAWN: JM	CHKD. MJK	APPD. FJH	DWG.1

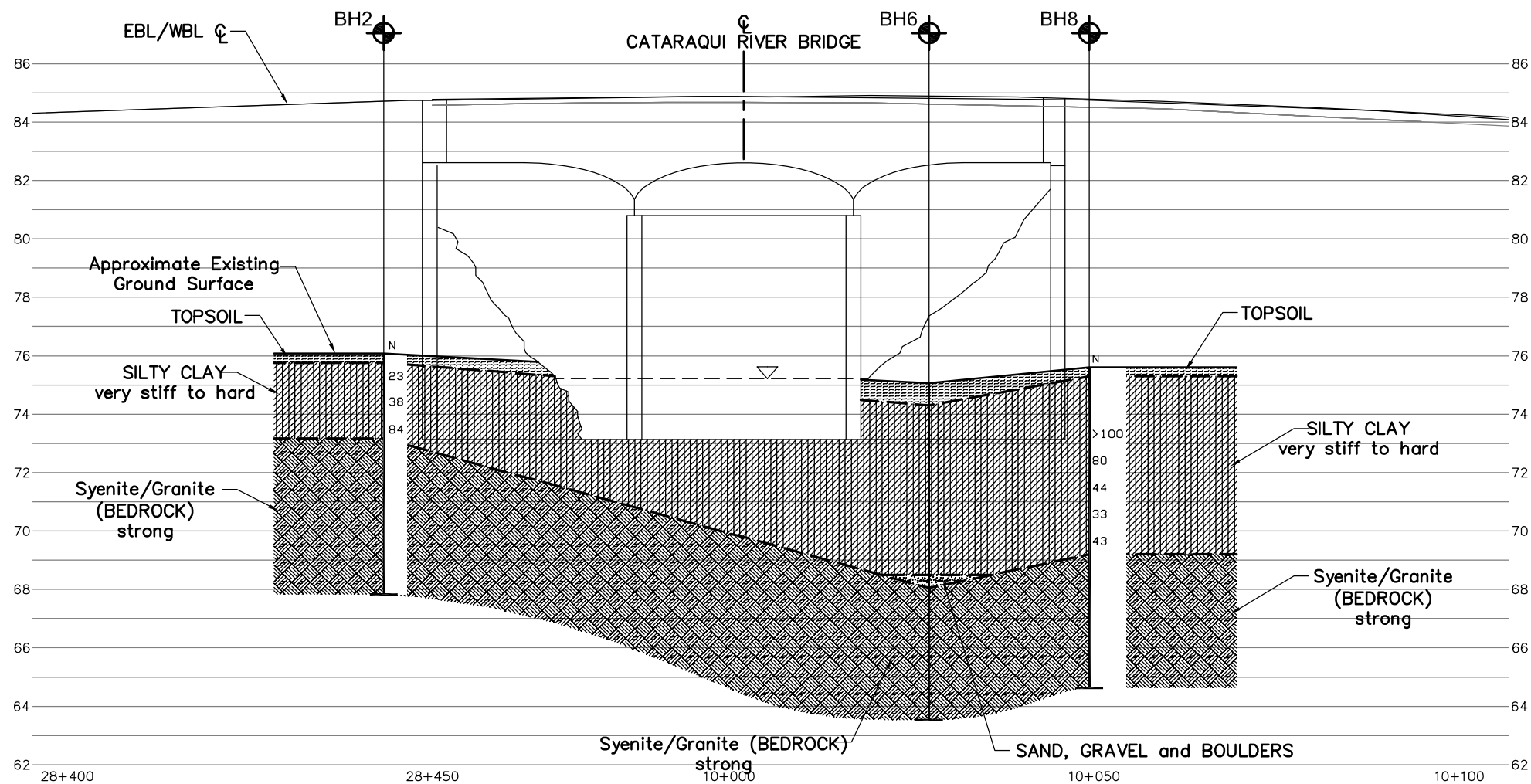


**REFERENCE**

Base plans provided in digital format by MMM Group Limited, drawing file no. 07437-MONTREAL-CAT BRIDGE BASE.dwg, received July 8, 2013.



**PLAN**  
SCALE  
8 0 8 16 m



**PROFILE**  
HORIZONTAL SCALE  
8 0 8 16 m  
VERTICAL SCALE  
2 0 2 4 m

**METRIC**  
DIMENSIONS ARE IN METRES AND/OR MILLIMETRES UNLESS OTHERWISE SHOWN. STATIONS IN KILOMETRES + METRES.

**CONT No.**  
**GWP No. 80-99-01**

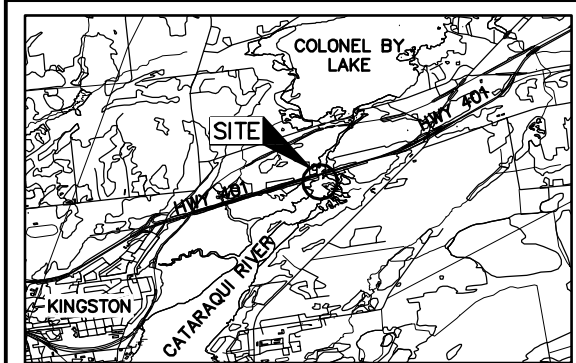


**CATARAQUI RIVER BRIDGE**  
**SITE 7-70**  
**BOREHOLE LOCATIONS AND SOIL STRATA**

**SHEET**



**Golder Associates Ltd.**  
OTTAWA, ONTARIO, CANADA



**KEY PLAN**  
SCALE  
1 0 1 2 km

**LEGEND**

- Borehole - Previous Investigation
- Penetration Test - Previous Investigation
- Seal
- Piezometer
- N Standard Penetration Test Value
- 16 Blows/0.3m unless otherwise stated (Std. Pen. Test, 475 j/blow)

No.	ELEVATION	NORTHING	EASTING
BH2	76.1	4904873.0	308918.3
BH3	75.1	4904843.8	308927.8
BH5	74.6	4904849.9	308945.7
BH6	75.1	4904896.6	308989.2
BH7	75.0	4904868.4	308994.7
BH8	75.6	4904903.5	309010.0
BH9	75.9	4904874.2	309019.4
BH12	75.1	4904882.6	308995.3
PT13	75.1	4904870.0	309006.3
PT14	75.6	4904874.4	308990.0
PT15	75.1	4904889.2	308990.6
E23	76.6	4904814.1	308903.4
E24	75.1	4904820.5	308930.1

**NOTES**

This drawing is for subsurface information only. The proposed structure details/works are shown for illustration purposes only and may not be consistent with the final design configuration as shown elsewhere in the Contracts Documents.

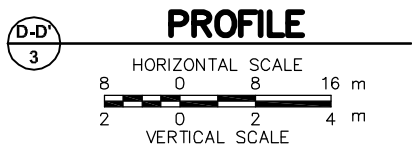
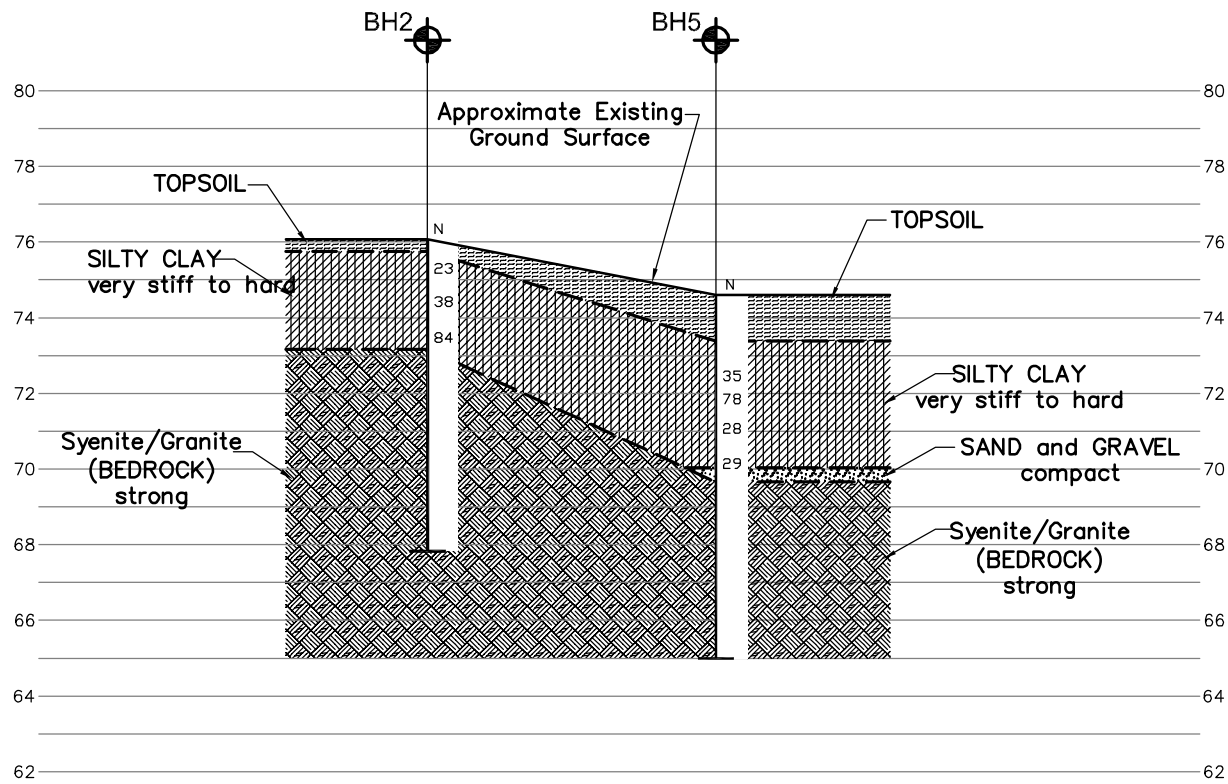
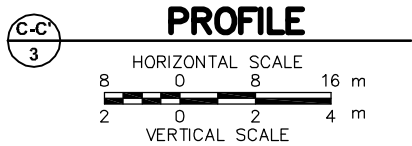
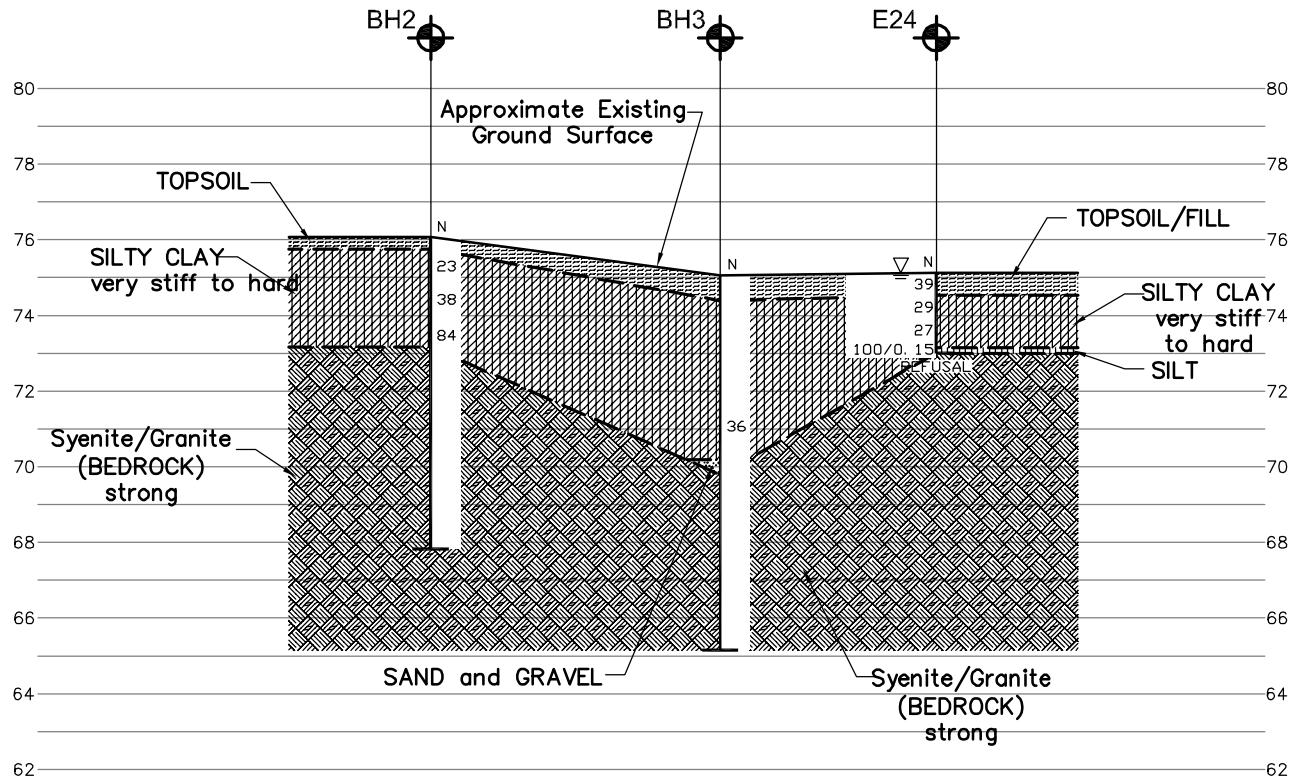
The boundaries between soil strata have been established only at borehole locations. Between boreholes the boundaries are assumed from geological evidence.

The complete Foundation Investigation and Design Report for this project and other related documents may be examined at the Materials Engineering and Research Office, Downsview. Information contained in this report and related documents is specifically excluded in accordance with Section GC 2.01 of OPS General Conditions.

NO.	DATE	BY	REVISION
Geocres No. <b>31C-215</b>			
HWY. <b>401</b>		PROJECT NO. <b>12-1121-0099-1340</b> DIST <b>Eastern</b>	
SUBM'D. <b>MJK</b>	CHKD. <b>FJH</b>	DATE: <b>Nov. 2013</b>	SITE: <b>7-70</b>
DRAWN: <b>JM</b>	CHKD. <b>MJK</b>	APPD. <b>FJH</b>	DWG: <b>2</b>

**REFERENCE**

Base plans provided in digital format by MMM Group Limited, drawing file no. 07437-MONTREAL-CAT BRIDGE BASE.dwg, received July 8, 2013.



**METRIC**  
DIMENSIONS ARE IN METRES AND/OR MILLIMETRES UNLESS OTHERWISE SHOWN. STATIONS IN KILOMETRES + METRES.

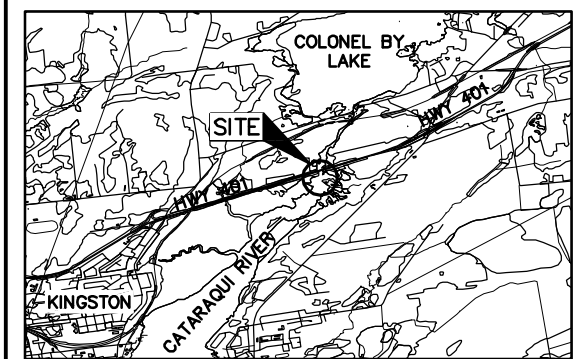
CONT No.  
GWP No. 80-99-01

CATARAQUI RIVER BRIDGE  
SITE 7-70  
SOIL STRATA

SHEET



**Golder Associates Ltd.**  
OTTAWA, ONTARIO, CANADA



**KEY PLAN**  
SCALE: 1:2000  
0 1 2 km

**LEGEND**

- Borehole - Previous Investigation
- Penetration Test - Previous Investigation
- Seal
- Piezometer
- N Standard Penetration Test Value
- 16 Blows/0.3m unless otherwise stated (Std. Pen. Test, 475 j/blow)
- WL upon completion of or during drilling

No.	ELEVATION	NORTHING	EASTING
BH2	76.1	4904873.0	308918.3
BH3	75.1	4904843.8	308927.8
BH5	74.6	4904849.9	308945.7
BH6	75.1	4904896.6	308989.2
BH7	75.0	4904868.4	308994.7
BH8	75.6	4904903.5	309010.0
BH9	75.9	4904874.2	309019.4
BH12	75.1	4904882.6	308995.3
PT13	75.1	4904870.0	309006.3
PT14	75.6	4904874.4	308990.0
PT15	75.1	4904889.2	308990.6
E23	76.6	4904814.1	308903.4
E24	75.1	4904820.5	308930.1

**NOTES**

This drawing is for subsurface information only. The proposed structure details/works are shown for illustration purposes only and may not be consistent with the final design configuration as shown elsewhere in the Contracts Documents.

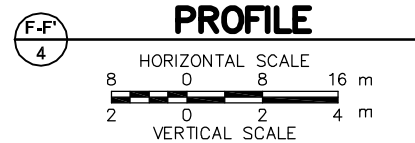
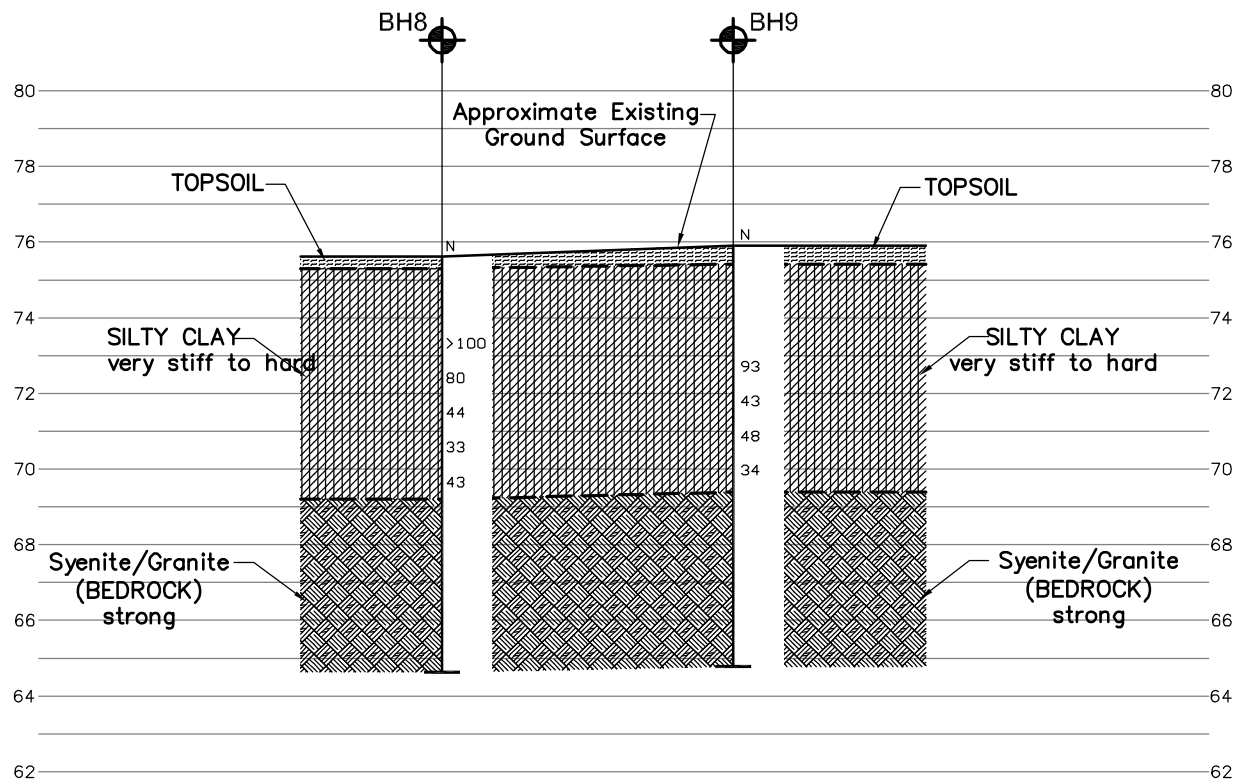
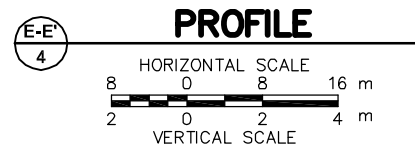
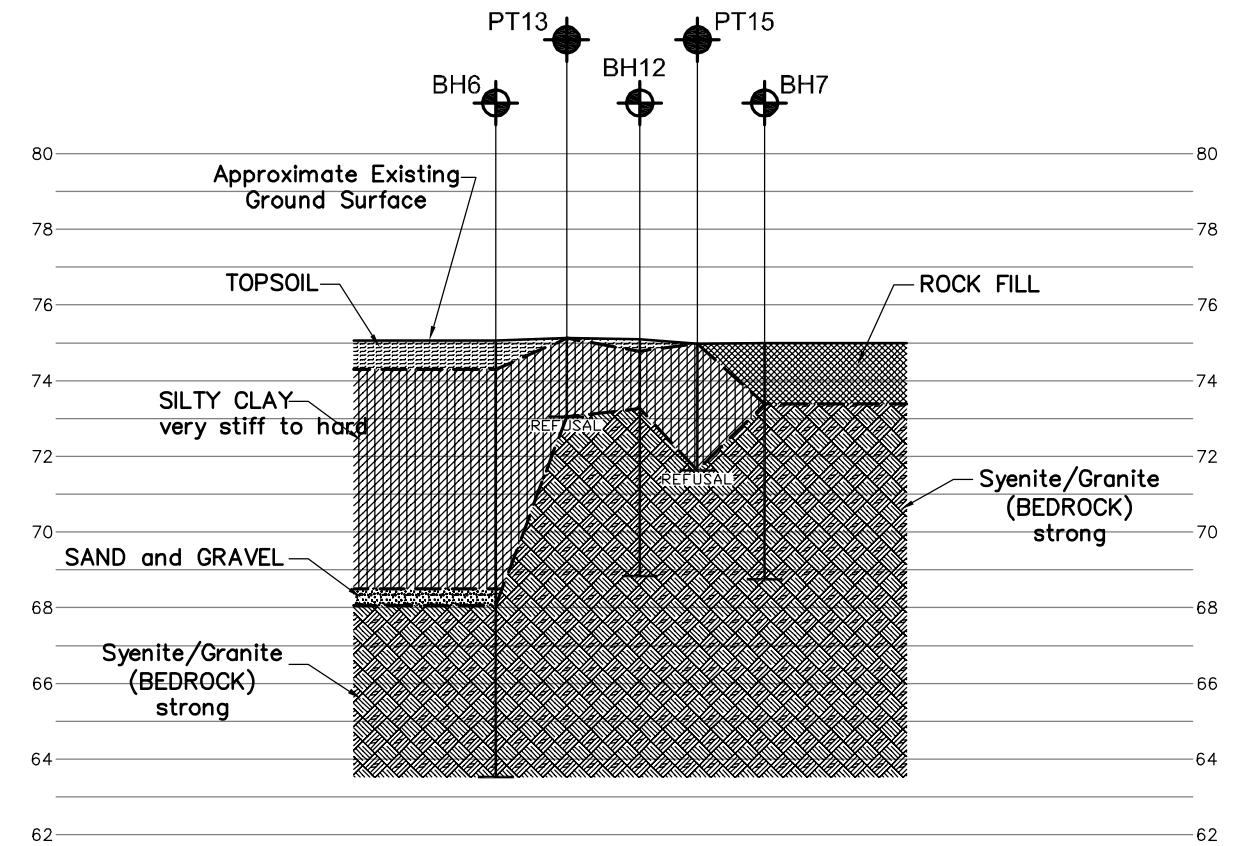
The boundaries between soil strata have been established only at borehole locations. Between boreholes the boundaries are assumed from geological evidence.

The complete Foundation Investigation and Design Report for this project and other related documents may be examined at the Materials Engineering and Research Office, Downsview. Information contained in this report and related documents is specifically excluded in accordance with Section GC 2.01 of OPS General Conditions.

NO.	DATE	BY	REVISION
Geocres No. 31C-215			
HWY. 401	PROJECT NO. 12-1121-0099-1340		
SUBM'D. MJK	CHKD. FJH	DATE: Nov. 2013	SITE: 7-70
DRAWN: JM	CHKD. MJK	APPD. FJH	DWG. 3

**REFERENCE**

Base plans provided in digital format by MMM Group Limited, drawing file no. 07437-MONTREAL-CAT BRIDGE BASE.dwg, received July 8, 2013.



**METRIC**  
DIMENSIONS ARE IN METRES AND/OR  
MILLIMETRES UNLESS OTHERWISE SHOWN.  
STATIONS IN KILOMETRES + METRES.

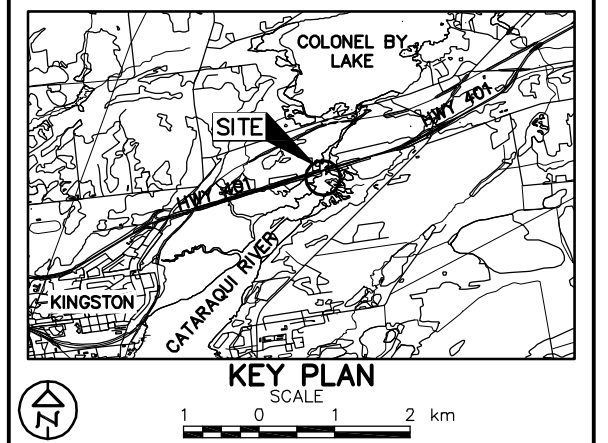
CONT No.  
GWP No. 80-99-01

CATARAQUI RIVER BRIDGE  
SITE 7-70  
SOIL STRATA

SHEET



**Golder Associates Ltd.**  
OTTAWA, ONTARIO, CANADA



#### LEGEND

- Borehole - Previous Investigation
- Penetration Test - Previous Investigation
- Seal
- Piezometer
- N Standard Penetration Test Value
- 16 Blows/0.3m unless otherwise stated (Std. Pen. Test, 475 j/blow)

No.	ELEVATION	NORTHING	EASTING
BH2	76.1	4904873.0	308918.3
BH3	75.1	4904843.8	308927.8
BH5	74.6	4904849.9	308945.7
BH6	75.1	4904896.6	308989.2
BH7	75.0	4904868.4	308994.7
BH8	75.6	4904903.5	309010.0
BH9	75.9	4904874.2	309019.4
BH12	75.1	4904882.6	308995.3
PT13	75.1	4904870.0	309006.3
PT14	75.6	4904874.4	308990.0
PT15	75.1	4904889.2	308990.6
E23	76.6	4904814.1	308903.4
E24	75.1	4904820.5	308930.1

#### NOTES

This drawing is for subsurface information only. The proposed structure details/works are shown for illustration purposes only and may not be consistent with the final design configuration as shown elsewhere in the Contracts Documents.

The boundaries between soil strata have been established only at borehole locations. Between boreholes the boundaries are assumed from geological evidence.

The complete Foundation Investigation and Design Report for this project and other related documents may be examined at the Materials Engineering and Research Office, Downsview. Information contained in this report and related documents is specifically excluded in accordance with Section GC 2.01 of OPS General Conditions.

NO.	DATE	BY	REVISION
Geocres No. 31C-215			
HWY. 401	PROJECT NO. 12-1121-0099-1340		
SUBM'D. MJK	CHKD. FJH	DATE: Nov. 2013	SITE: 7-70
DRAWN: JM	CHKD. MJK	APPD. FJH	DWG. 4

#### REFERENCE

Base plans provided in digital format by MMM Group Limited, drawing file no. 07437-MONTREAL-CAT BRIDGE BASE.dwg, received July 8, 2013.