

Terraprobe

Consulting Geotechnical & Environmental Engineering

Construction Materials Inspection & Testing

**DRAFT
PRELIMINARY
FOUNDATION INVESTIGATION REPORT
DECEPTION CREEK BRIDGE REPLACEMENT
HIGHWAY 668
ASSIGNMENT No. 5013-E-0018
MINISTRY OF TRANSPORTATION, ONTARIO
G.W.P. No. 5267-11-00, SITE 39E-169
GEOCRES NO.**

PREPARED FOR: MMM Group Limited
2655 North Sheridan Way, Suite 300
Mississauga, Ontario
L5K 2P8

Attention: Mr. Trevor Small, M.Sc., P.Eng.

File No. 1-15-0509
August 08, 2016

©Terraprobe Inc.

Distribution:

- 1 Copy - MTO Project Manager (Northeastern Region)
- 1 Copy - MTO Pavements and Foundations Section
- 1 Copy - MMM Group Limited, Mississauga
- 1 Copy - Terraprobe Inc., Brampton

Terraprobe Inc.

Greater Toronto

11 Indell Lane
Brampton, Ontario L6T 3Y3
(905) 796-2650 Fax: 796-2250
brampton@terraprobe.ca

Hamilton – Niagara

903 Barton Street, Unit 22
Stoney Creek, Ontario L8E 5P5
(905) 643-7560 Fax: 643-7559
stoneycreek@terraprobe.ca

Central Ontario

220 Bayview Drive, Unit 25
Barrie, Ontario L4N 4Y8
(705) 739-8355 Fax: 739-8369
barrie@terraprobe.ca

Northern Ontario

1012 Kelly Lake Rd., Unit 1
Sudbury, Ontario P3E 5P4
(705) 670-0460 Fax: 670-0558
sudbury@terraprobe.ca

www.terraprobe.ca

TABLE OF CONTENTS

FOUNDATION INVESTIGATION REPORT	1
1.0 INTRODUCTION	1
2.0 SITE DESCRIPTION	1
3.0 INVESTIGATION PROCEDURES	1
4.0 SITE GEOLOGY AND SUBSURFACE CONDITIONS.....	2
4.1 Regional Geology.....	2
4.2 Subsurface Conditions	2
4.2.1 Flexible Pavement.....	3
4.2.2 Fill – Sand	3
4.2.3 Fill – Silty Clay.....	3
4.2.4 Peat.....	4
4.2.5 Silty Clay	4
4.2.6 Silt	5
4.2.7 Clayey Silt	5
4.2.8 Sand and Silt.....	6
4.2.9 Sand.....	6
4.2.10 Silty Sand Till.....	7
4.2.11 Bedrock.....	7
4.3 Ground Water Levels	8
5.0 MISCELLANEOUS	9

REFERENCES

LIST OF DRAWINGS

Drawing 1	Borehole Locations and Soil Strata – Centre Line Profile of Highway 668
Drawing 2	Borehole Locations and Soil Strata – Sections A-A', B-B' and C-C'

LIST OF APPENDICES

APPENDIX A Record of Borehole Sheets

List of Symbols and Abbreviations

Record of Borehole Sheets – BH1, BH2 and BH3.

APPENDIX B Field and Laboratory Test Results and Photographs

Figure B1	Grain Size Distribution – Gravelly Sand Fill
Figure B2	Grain Size Distribution – Sand Fill
Figure B3	Grain Size Distribution – Silty Clay Fill
Figure B4	Plasticity Chart – Silty Clay Fill
Figure B5	Silty Clay – Plot of Undrained Shear Strength versus Elevation



Figure B6	Grain Size Distribution – Silty Clay
Figure B7	Plasticity Chart – Silty Clay
Figure B8	Silty Clay – Atterberg Limits and Water Content versus Elevation
Figure B9 – B11	Silty Clay – One Dimensional Consolidation Test Results
Figure B12	Grain Size Distribution – Silt
Figure B13	Grain Size Distribution – Clayey Silt
Figure B14	Plasticity Chart – Clayey Silt
Figure B15	Grain Size Distribution – Sand and Silt
Figure B16	Photograph of Cobbles and Boulders
Figure B17	Grain Size Distribution – Sand
Figure B18	Grain Size Distribution – Silty Sand Till
Figure B19 – B22	Photographs of Bedrock Core Samples



FOUNDATION INVESTIGATION REPORT

**DECEPTION CREEK BRIDGE REPLACEMENT, SITE 39E-169
HIGHWAY 668
TOWNSHIP OF CLUTE, DISTRICT OF COCHRANE, ONTARIO
ASSIGNMENT No. 5013-E-0018, G.W.P. 5267-11-00**



1.0 INTRODUCTION

Terraprobe Inc. (Terraprobe) has been retained by MMM Group Limited (MMM) on behalf of the Ministry of Transportation, Ontario (MTO) to provide foundation engineering services in support of preliminary designs for the rehabilitation of structures identified in MTO's Request for Proposal (RFP) titled *"Preliminary Design, Rehabilitation/Replacement of Twelve Structures on Highway 11, 101, 577, 579, 634 & 668, in New Liskeard Area"*, Contract Number. 5013-E-0018.

The terms of reference and scope of work for the foundation engineering services are outlined in MTO's RFP, and in Section 5.7 of MMM's *Technical Proposal* for this assignment. This report presents the factual data on subsurface conditions at the Deception Creek Bridge, Site 39E-169 on Highway 668, Township of Clute, District of Cochrane, Ontario.

2.0 SITE DESCRIPTION

The site is located on Highway 668 (Latitude 49.113°, Longitude – 81.272°), approximately 6 km north of the highway's south junction with Trans-Canada Highway 11 in the Township of Clute, Ontario. Cochrane is located south-east of the site and the village of Huntia is located approximately 1.4 km south of the site. The key plan on the Borehole Locations and Soil Strata Drawing, (Drawing 1) provides an overview of the site location.

The existing structure is a seven-span timber bridge that is 33± m long and 9± m wide, supported on timber piles. This bridge carries Highway 668 north bound and south bound traffic over Deception Creek. Deception Creek flows from west to east meandering within a well-defined flood plain.

The terrain at the bridge site and surrounding area is generally gently rolling. Vegetation within the flood plain area consists primarily of grass and shrubs. Beyond the flood plain, the area is vegetated with mature stands of deciduous and coniferous trees.

3.0 INVESTIGATION PROCEDURES

The field work for this project was carried out between September 14 and September 17, 2015 and consisted of drilling and sampling three boreholes to depths ranging from 18.9 m to 21.1 m below ground surface. The approximate borehole locations are shown on Drawing 1.

Based on borehole locations plans provided by Terraprobe, MTO Geomatics staked out the boreholes in the field. Terraprobe's staff surveyed the boreholes for coordinates and geodetic elevations by referring to Control Point HCP 101. This data is summarized in the following table.

Borehole No.	Local Coordinates		Ground Surface Elevation (m)	Borehole Depth (m)
	Northing (m)	Easting (m)		
BH1	5 441 652.1	284 923.2	265.4	21.1
BH2	5 441 691.7	284 919.6	265.8	20.0
BH3	5 441 584.6	284 922.9	265.7	18.9

The boreholes were drilled with a truck-mounted CME 55 drill rig supplied and operated by a specialist drilling contractor. Samples of the overburden soils were generally obtained at intervals of 0.75 m and 1.5 m depth using a 50 mm outer diameter (O.D.) split-spoon sampler in conjunction with the Standard

Penetration Testing (SPT) procedures as specified in ASTM Method D 1586¹. Relatively undisturbed samples of the clay soils were also collected with thin-walled Shelby Tube samplers. In the clay deposits an MTO 'N' vane was used to perform in-situ field vane tests, in order to determine the undrained shear strength of the soil. Terraprobe's staff observed the drilling, sampling and in situ testing operations and logged the boreholes on a full-time basis.

Ground water conditions in the open boreholes were observed during the drilling operations and standpipe piezometers were installed in Boreholes 2 and 3 to permit longer term ground water level monitoring. The boreholes were backfilled in accordance with current MTO procedures and Ontario Regulation 903 (as amended).

The recovered soil and rock samples were subjected to Visual Identification (VI) and select soil samples were also subjected to a laboratory testing programme consisting of natural moisture content, grain size distribution analyses, Atterberg limits determinations and one-dimensional consolidation testing in accordance with MTO and/or ASTM Standards as appropriate. The bedrock core samples were subjected to point load index tests.

4.0 SITE GEOLOGY AND SUBSURFACE CONDITIONS

4.1 Regional Geology

The study area is located north of the Great Lakes-Hudson Bay drainage divide. All surface drainage flows northwards into James Bay. The major river system located close to the site is the Abitibi river. Surficial geology of the study area indicates the presence of clays, silts, organic deposits and glaciofluvial ice-contact deposits such as gravels, sands and minor till.

The study area lies within the Abitibi Greenstone Belt of the Superior structural province of the Canadian Shield. The Abitibi Greenstone Belt consists of both volcanic and sedimentary rocks though typically dominated by mafic metavolcanic rocks. Several felsic and alkaline intrusions occur throughout the area.

4.2 Subsurface Conditions

Reference is made to the Record of Borehole Sheets in Appendix A. Details of the encountered soil stratigraphy are presented in this appendix and on the "Borehole Locations and Soil Strata" drawings. An overall description of the stratigraphy is given in the following paragraphs.

The stratigraphic boundaries shown on the Record of Boreholes and on the interpreted stratigraphic section are inferred from non-continuous soil sampling and therefore represent transitions between soil types rather than exact planes of geological change. The subsurface conditions will vary between and beyond the borehole locations.

In summary, the highway pavement is generally underlain by fill material consisting of loose sand and firm to stiff silty clay. The fill soils are further underlain by deposits of peat, firm to stiff silty clay, loose silt, firm clayey silt, very loose to very dense sand and silt, inferred very dense sand and loose to dense silty sand till. These overburden soils are further underlain by greywacke bedrock. A more detailed description of the subsurface conditions is provided in the following sections.

¹ ASTM D1586 – Standard Test Method for Standard Penetration Tests and Split Barrel Sampling of Soils.

4.2.1 Flexible Pavement

The boreholes were drilled through a flexible pavement consisting of 15 mm to 65 mm thick asphaltic concrete, underlain by granular fill varying in composition from sand and gravel to gravelly sand. The locations, thicknesses and base elevations of the granular base fill are summarized in the following table.

Borehole No.	Fill Thickness (mm)	Fill Base Elevation (m)
BH1	615	264.7
BH2	605	265.1
BH3	590	265.1

Standard Penetration tests carried out in the sand and gravel and gravelly sand fill measured SPT N-values of 23 to 56 blows for 0.3 m of penetration indicating a compact to very dense relative density. The natural water content of samples of the sand and gravel and gravelly sand fill range from 3% to 5% by weight.

The grain size distribution curve of a sample of the gravelly sand fill is presented in Figure B1 in Appendix B. The results show a grain size distribution consisting of 24% gravel, 58% sand, 12% silt and 6% clay size particles.

4.2.2 Fill – Sand

A 0.7 m thick layer of sand fill was encountered in Borehole 1 extending to a depth of 1.4 m (elevation 264.0 m). A Standard Penetration test carried out in this sand fill measured a SPT N-value of 10 blows for 0.3 m of penetration suggesting a loose relative density.

The grain size distribution curve of a sample of the sand fill is illustrated in Figure B2 in Appendix B. The results show a grain size distribution consisting of 13% gravel, 63% sand, 14% silt and, 10% clay size particles.

4.2.3 Fill – Silty Clay

Silty clay fill material was encountered in the boreholes. The locations, thicknesses, depths and base elevations of the silty clay fill are summarized in the following table.

Borehole No.	Fill Thickness (m)	Fill Depth (m)	Fill Base Elevation (m)
BH1	2.5	3.9	261.5
BH2	2.2	2.9	262.9
BH3	1.3	1.9	263.8

Standard Penetration tests performed in the silty clay fill measured SPT N-values ranging from 6 to 12 blows for 0.3 m of penetration indicating a firm to stiff consistency. The moisture content (by weight) of samples of the silty clay fill varies between 17% and 25% by weight.

The grain size distribution plot of a sample of the silty clay fill is depicted in Figure B3 in Appendix B. The results show a grain size distribution consisting of 1% gravel, 15% sand, 54% silt and 30% clay size particles.

An Atterberg limits test was also carried out on a sample of the silty clay fill and the results are presented in Figure B4 in Appendix B. These values indicate that the fill is a cohesive soil (CL) with low plasticity.

The Atterberg limits test results are summarized below:

Liquid Limit:	25 %
Plastic Limit:	16 %
Plasticity Index:	9 %
Natural Moisture Content:	17 %

4.2.4 Peat

Amorphous peat was encountered below the silty clay fill in Boreholes 1 and 3. The locations, thicknesses, depths and base elevations of the peat deposit are summarized in the following table.

Borehole No.	Silty Clay to Clay Thickness (m)	Silty Clay to Clay Depth (m)	Silty Clay to Clay Base Elevation (m)
BH1	1.3	5.2	260.2
BH3	0.2	2.1	263.6

The N-values of Standard Penetration tests carried out in the peat deposit measured 3 blows per 0.3 m of penetration and the moisture content (by weight) of two samples of the peat are 49% and 44%.

4.2.5 Silty Clay

The site is underlain by a silty clay deposit. The locations, thicknesses, depths and base elevations of the silty clay deposit are summarized in the following table.

Borehole No.	Silty Clay Thickness (m)	Silty Clay Depth (m)	Silty Clay Base Elevation (m)
BH1	0.7	5.9	259.5
BH2	1.5	4.4	261.4
BH3	7.0	9.1	256.6

The N-values of Standard Penetration tests carried out in the silty clay deposit range from 0 blows (weight of rods) to 8 blows per 0.3 m of penetration and, field vane tests measured in-situ undrained shear strengths ranging from 32 kPa to 64 kPa. A plot of undrained shear strength versus elevation is shown in Figure B5 in Appendix B. Based on the undrained shear strength values, the consistency of the silty clay is described as firm to stiff. The sensitivity of the silty clay ranges from 4.3 to 8.7, indicating a sensitive to extra-sensitive soil class (Canadian Foundation Engineering Manual [CFEM], 2006).

Samples of the silty clay were subjected to grain size distribution tests and the grain size distribution curves are illustrated in Figure B6 in Appendix B. The test results show a grain size distribution consisting of 0% to 1% gravel, 0% to 9% sand, 26% to 53% silt and, 40% to 73% clay size particles.

Atterberg limits tests were carried out on samples of the silty clay and the results are plotted on the plasticity chart, Figure B7 in Appendix B. The results indicate a cohesive deposit of low to medium plasticity (CL to CI). The Atterberg limits test results are summarized below.

Liquid Limit:	30% to 46 %
Plastic Limit:	15% to 20 %
Plasticity Index:	13% to 26 %
Natural Moisture Content:	22% to 46 %

The Atterberg Limits test results of the silty clay deposit are also plotted against elevation in Figure B8. The moisture content of samples of the silty clay varies between 22% and 46% and the unit weight of a tested sample is 19.3 kN/m³.

A one-dimensional consolidation test was performed on a sample of the silty clay and the results are presented in Figures B9 to B11 in Appendix B. The results of the one-dimensional consolidation test are summarized below.

Borehole/Sample No.	Sample Depth/Elevation (m)	σ'_{vo} (kPa)	σ'_p (kPa)	C_c	C_r	e_o
BH3, TW9	6.4 / 259.3	72	130	0.26	0.04	0.83

Where: σ'_{vo} = effective overburden pressure;
 σ'_p = Preconsolidation pressure;
 C_c = Compression index;
 C_r = Recompression index; and
 e_o = Initial void ratio.

The preconsolidation pressure derived from the consolidation test data is higher than the effective overburden pressure suggesting that the silty clay deposit is overconsolidated.

4.2.6 Silt

Boreholes 1 and 2 encountered silt layers. The locations, thicknesses, depths and base elevations of the silt layers are summarized in the following table.

Borehole No.	Silt Thickness (m)	Silt Depth (m)	Silt Base Elevation (m)
BH1	4.5	10.4	255.0
BH2	1.5	5.9	259.9
	3.4	10.1	255.7

Standard Penetration tests performed in the silt deposits measured SPT N-values that range from 6 blows to 9 blows for 0.3 m of penetration indicating a loose relative density. The moisture content (by weight) of samples of the silt varies between 24% and 35%.

The grain size distribution plots of samples of the silt are depicted in Figure B12 in Appendix B. The results show a grain size distribution consisting of 0% gravel, 0% to 3% sand, 81% to 93% silt and, 7% to 18% clay size particles.

4.2.7 Clayey Silt

In Borehole 2 the silt deposit is divided by a 0.8 m thick layer of clayey silt, encountered at a depth of 6.7 m (elevation 259.1 m) below ground surface. A Standard Penetration test performed in the clayey silt deposit measured a SPT N-value of 5 blows for 0.3 m of penetration indicating a firm consistency. The moisture content (by weight) of a sample of the clayey silt is 28%.

A grain size distribution test was carried out on a sample of the clayey silt and the results are shown on the grain size distribution curve in Figure B13 in Appendix B. The test results show a grain size distribution of 0% gravel, 1% sand, 76% silt and, 23% clay size particles.

An Atterberg limits test was also carried out on a sample of the clayey silt and the results are plotted on the plasticity chart, Figure B14 in Appendix B. The results indicate a cohesive deposit with low plasticity (CL-ML). The Atterberg limits test results are summarized below.

Liquid Limit:	23 %
Plastic Limit:	18 %
Plasticity Index:	5 %
Natural Moisture Content:	28 %

4.2.8 Sand and Silt

A sand and silt deposit was encountered at this site. The locations, thicknesses, depths and base elevations of the sand and silt deposit are summarized in the following table.

Borehole No.	Sand and Silt Thickness (m)	Sand and Silt Depth (m)	Sand and Silt Base Elevation (m)
BH1	5.3	15.7	249.7
BH2	1.6	11.7	254.1
BH3	2.6	11.7	254.0

The N-values of Standard Penetration tests carried out in the sand and silt deposit range from 0 blows (weight of rods) to 22 blows and more than 100 blows per 0.3 m of penetration. Based on these N-values the sand and silt deposit is described as very loose to compact with very dense zones. The moisture content (by weight) of samples of the sand and silt varies between 12% and 16%.

The grain size distribution plots of two samples of the sand and silt are depicted in Figure B15 in Appendix B. The results show a grain size distribution consisting of 4% and 5% gravel, 47% and 59% sand, 33% and 43% silt and, 4% and 5% clay size particles.

In Borehole 1 the matrix of the sand and silt deposit contains cobbles and boulders below a depth of 12.5 m \pm (elevation 252.9 m \pm) and, NQ-size diamond coring techniques were implemented to extend the boring through the cobbles and boulders. The recovered cobble and boulder core samples are illustrated in Figure B16 in Appendix B.

4.2.9 Sand

Borehole 1 encountered a 1.3 m thick layer of sand at a depth of 17.0 m (elevation 248.4 m) below ground surface. Frequent cobbles and boulders were encountered in the sand layer and NQ size coring techniques were implemented to extend the boring through the cobbles and boulders. The recovered cobble and boulder core samples are illustrated in Figure B16 in Appendix B. Standard Penetration Tests were not performed in the sand deposit because of the frequency of cobble and boulder inclusions and the sand deposit is inferred to have a very dense relative density.

The moisture content (by weight) of a sample of the sand is 18%. The grain size distribution plot of a sample of the sand is depicted in Figure B17 in Appendix B. The results show a grain size distribution consisting of 13% gravel, 75% sand and 12% silt and clay size particles.

4.2.10 Silty Sand Till

Silty sand till deposits were encountered in Boreholes 2 and 3. The locations, thicknesses, depths and base elevations of the silty sand till are summarized in the following table.

Borehole No.	Sand and Silt Thickness (m)	Sand and Silt Depth (m)	Sand and Silt Base Elevation (m)
BH2	2.9	14.6	251.2
BH3	4.5	16.2	249.5

The N-values of Standard Penetration tests carried out in the silty sand till deposit range from 8 blows to 32 blows per 0.3 m of penetration indicating a loose to dense relative density. The moisture content (by weight) of samples of the silty sand till varies from 10% to 16%.

The grain size distribution plot of a sample of the silty sand till is depicted in Figure B18 in Appendix B. The results show a grain size distribution consisting of 29% gravel, 37% sand, 28% silt and, 6% clay size particles. Till soils can also be expected to contain random cobbles and boulders.

4.2.11 Bedrock

The overburden soils are underlain by greywacke bedrock. Summarized below are the depths to bedrock and the bedrock surface elevations.

Borehole No.	Depth to Bedrock (m)	Top of Bedrock Elevation (m)
BH1	17.0	248.4
BH2	14.6	251.2
BH3	16.2	249.5

The greywacke bedrock is described as unweathered to slightly weathered, thickly bedded and its colour is light grey to grey. Photographs of the bedrock core samples are provided in Figures B19 to B22 in Appendix B. Summarized below are the Rock Quality Designation, Rock Mass Quality, Total Core Recovery and Solid Core Recovery.

Borehole No.	Rock Quality Designation (RQD)	Rock Mass Quality ²	Total Core Recovery (TCR)	Solid Core Recovery (SCR)
BH1	73% to 89%	Fair to Good	97% to 100%	95% to 100%
BH2	48% to 87%	Poor to Good	81% to 100%	77% to 93%
BH3	83% and 89%	Good	99% and 100%	99% and 100%

Point Load Index Tests were carried out on the bedrock core samples and the interpreted unconfined compressive strength (UCS) results range from 88 MPa to 303 MPa. These UCS results classify the tested portions of the bedrock as strong to extremely strong (R4, R5 and R6 grade, 50 MPa to more than 250 MPa); according to the rock strength classification in Table 3.5 of the *Canadian Foundation Engineering Manual 2006*.

² Deere et al., 1967.

4.3 Ground Water Levels

The ground water conditions were observed in the boreholes during and upon completion of drilling and standpipe piezometers were installed in Boreholes 2 and 3. The ground water levels measured in the piezometer are summarized in the following table.

Borehole No.	Date	Water Levels	
		Depth (m)	Elevation (m)
BH2	October 1, 2015	1.7	264.1
	October 7, 2015	1.8	264.0
BH3	September 28, 2015	1.2	264.5
	October 9, 2015	1.3	264.4

The ground water level at this site is estimated to vary from Elevation 264.0 m to 264.5 m, based on the ground surface topography, soil moisture conditions, measured ground water levels and creek water levels. The ground water level is expected to fluctuate seasonally, will rise during wet periods of the year, and will also be controlled by the free water level in the creek.



5.0 MISCELLANEOUS

The investigation was carried out using drilling equipment supplied and operated by Landcore Drilling of Chelmsford, Ontario. The field operations were supervised by Ms. Sepideh D-Monfared, MEng. and the routine laboratory and one-dimensional consolidation testing was carried out at Terraprobe's Brampton laboratory.

This report was prepared by Ms. Sepideh D-Monfared, MEng. and reviewed by Mr. Rehman Abdul, P.Eng., a Senior Geotechnical Engineer and Principal with Terraprobe. Mr. Michael Tanos, P.Eng., Terraprobe's Designated MTO Contact conducted an independent quality control review.

Terraprobe Inc.

Sepideh D-Monfared, MEng.

Rehman. Abdul, P.Eng.
Principal, Senior Geotechnical Engineer

Michael Tanos, P.Eng.
Designated MTO Contact



REFERENCES

Canadian Geotechnical Society, 2006. *Canadian Foundation Engineering Manual*, 4th Edition. The Canadian Geotechnical Society c/o BiTech Publisher Ltd, British Columbia.

Deere et al., 1967. *Design of Surface and Near Surface Construction in Rock*. Society of Mining Engineers of AIME, New York.

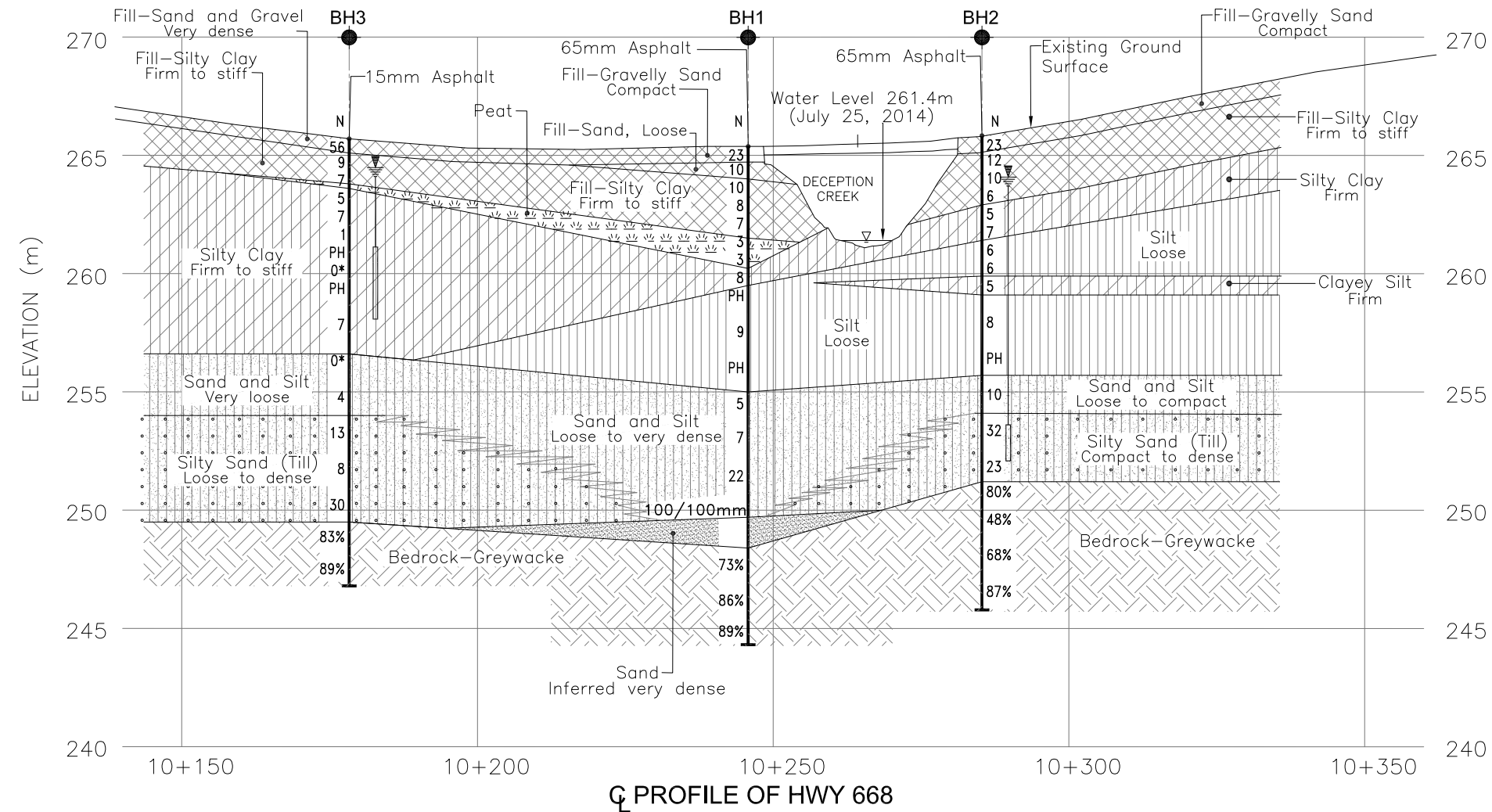
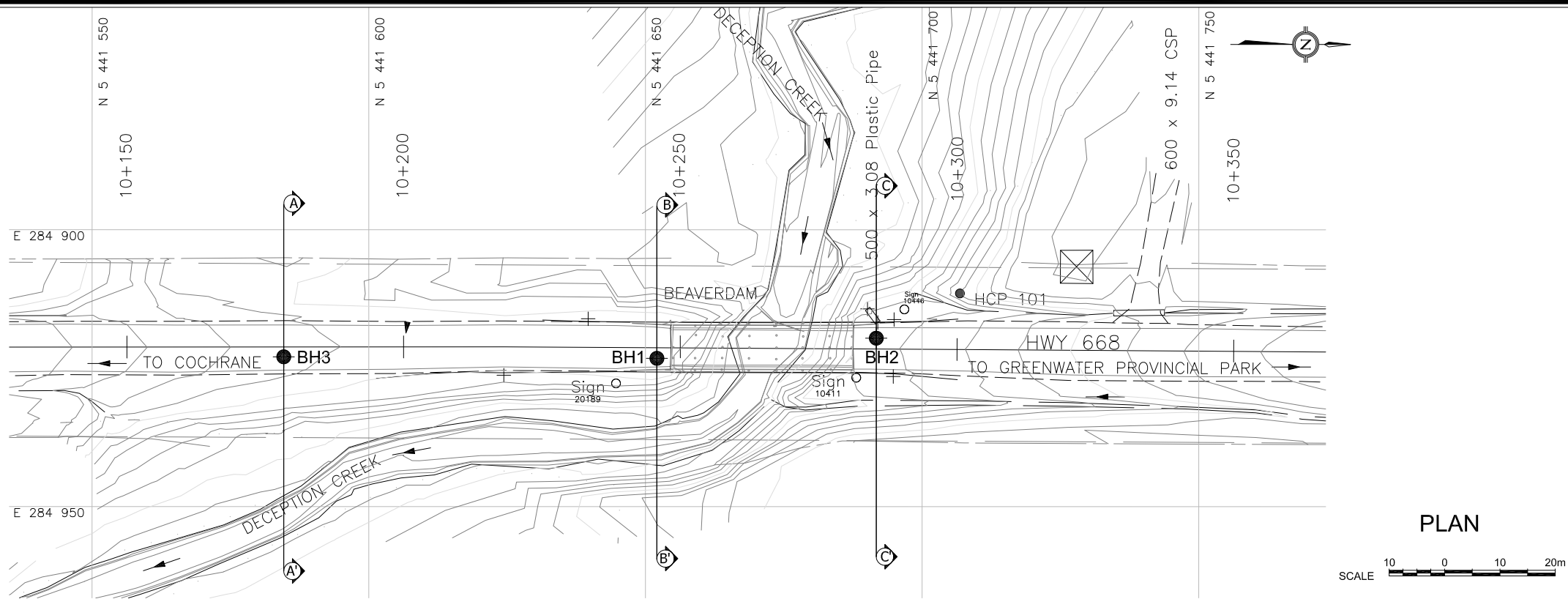
DRAFT



DRAWINGS



Z:\1-Project Files\2015\1-15-0509-New Liskeard Area, MTO Northern Region\01-Preliminary\BID2-Deception Creek Bridge\A-Dwg, Logo\AutoCAD\1-15-0509-Deception Creek Bridge BH Plan & Profile-R1.dwg
Kamal



HORIZ. SCALE 10 5 0 5 10 15 20m
VERT. SCALE 2.5 0 2.5 5m

METRIC
DIMENSIONS ARE IN METRES
AND/OR MILLIMETERS UNLESS
OTHERWISE SHOWN

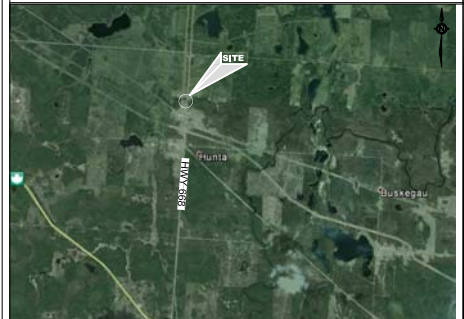
GWP No.: 5267-11-00

HWY 668
DECEPTION CREEK BRIDGE
BOREHOLE LOCATIONS AND SOIL STRATA

SHEET
1 OF 2



Terraprobe Inc.
Consulting Geotechnical & Environmental Engineering
Construction Materials Engineering, Inspection & Testing
11 Indell Lane - Brampton Ontario L6T 3Y3 (905) 796-2650



KEY PLAN

LEGEND	
	Bore Hole
	Dynamic Cone Penetration Test
	Bore Hole And Cone
	Blows/0.3m (Std Pen Test, 475 J/blow)
	Blows/0.3m (60' Cone, 475 J/blow)
	WL at Time of Investigation
	WL in Piezometer
	Piezometer
	Rock Quality Designation
	Auger Refusal

No	ELEV.	LOCAL COORDINATES	
		NORTHING	EASTING
1	265.4	5 441 652.1	284 923.2
2	265.8	5 441 691.7	284 919.6
3	265.7	5 441 584.6	284 922.9

NOTE

This drawing is for subsurface information only. The proposed structure details/works if shown are for illustration purposes only and may not be consistent with final design configuration as shown elsewhere in the contract documents.

The boundaries between soil strata have been established only at borehole locations. Between boreholes the boundaries are assumed from geological evidence.

The complete foundation investigation report for this project and other related documents may be examined at the Materials Engineering and Research Office, Downsview. Information contained in this report and related documents are specifically excluded in accordance with Section GC 2.01 of OPS General Conditions.

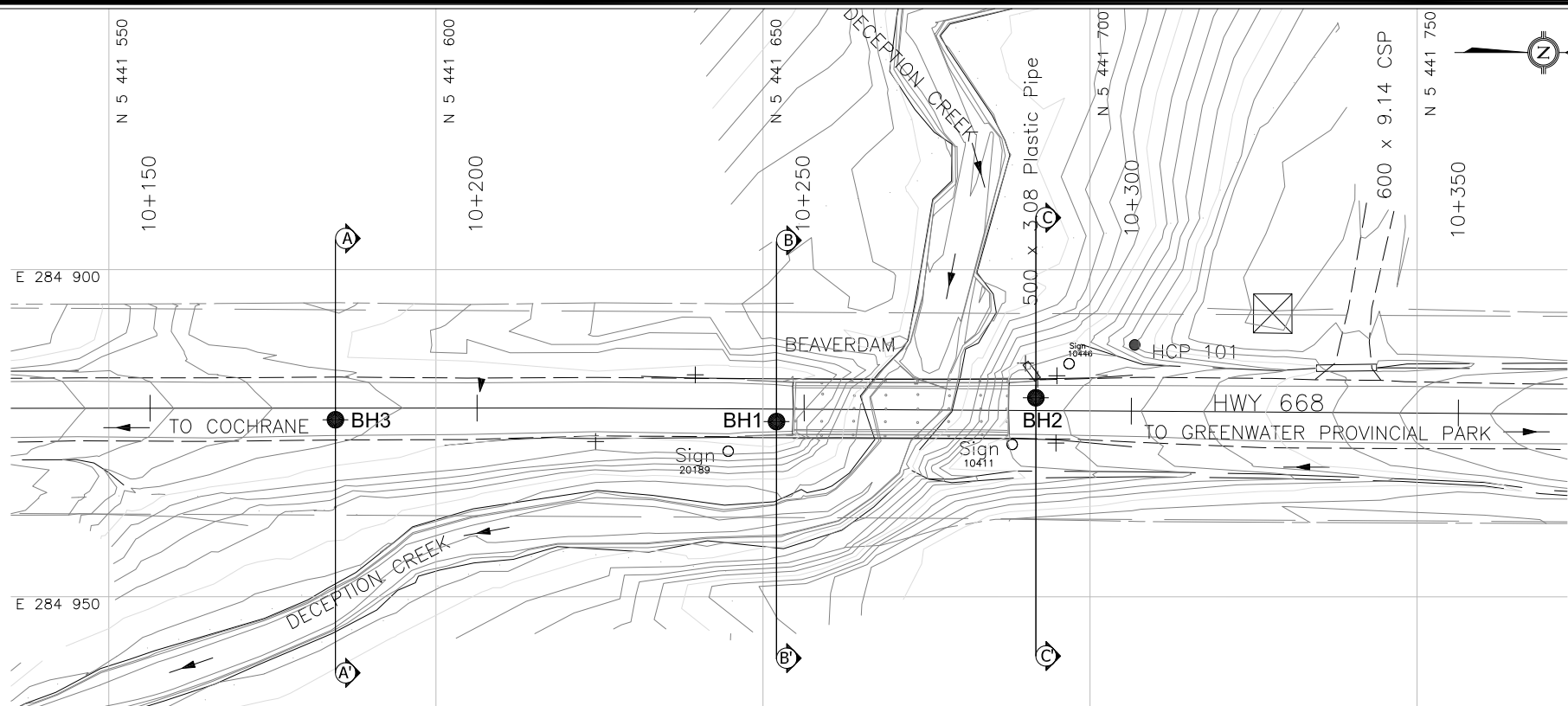
REFERENCE

Drawings provided in digital format by MMM Group Ltd. by CD (Assignment 5013-E-0018 Preliminary Design for Rehab/Replacement of 12 Structures on Highways in New Liskeard Area) drawing files B5280668001, DTMS280668001, received September 11, 2014

REVISIONS			
	DATE	BY	DESCRIPTION

HWY. 668	PROJECT No. 1-15-0509	DIST. 39E-169
SUBM'D.SD	CHKD. RA	DATE: AUGUST 2016
DRAWN: KC	CHKD. RA	APPD: MT

Z:\1-Project Files\2015\1-15-0509-New Liskeard Area, MTO Northern Region\01-Preliminary\B02-Deception Creek Bridge\A-Dwg, LogisAutoCAD\1-15-0509-Deception Creek Bridge BH Plan & Profile-R1.dwg
Kamal



PLAN

SCALE 10 0 10 20m

METRIC
DIMENSIONS ARE IN METRES
AND/OR MILLIMETERS UNLESS
OTHERWISE SHOWN

GWP No.: 5267-11-00

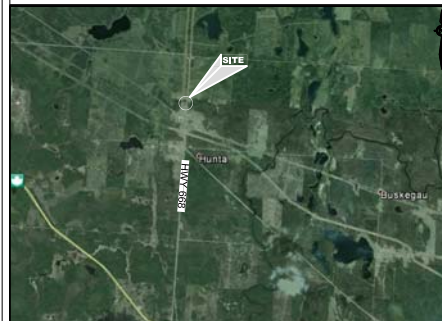
HWY 668
DECEPTION CREEK BRIDGE
BOREHOLE LOCATIONS AND SOIL STRATA



SHEET
2 OF 2



Terraprobe Inc.
Consulting Geotechnical & Environmental Engineering
Construction Materials Engineering, Inspection & Testing
11 Indell Lane - Brampton Ontario L6T 3Y3 (905) 796-2650



SCALE 0 1 2km

KEY PLAN

LEGEND

- Bore Hole
- Dynamic Cone Penetration Test
- Bore Hole And Cone
- 'N' Blows/0.3m (Std Pen Test, 475 J/blow)
- CONE Blows/0.3m (60' Cone, 475 J/blow)
- WL at Time of Investigation
- WL in Piezometer
- Piezometer
- 90% Rock Quality Designation
- A/R Auger Refusal

No	ELEV.	LOCAL COORDINATES	
		NORTHING	EASTING
1	265.4	5 441 652.1	284 923.2
2	265.8	5 441 691.7	284 919.6
3	265.7	5 441 584.6	284 922.9

NOTE

This drawing is for subsurface information only. The proposed structure details/works if shown are for illustration purposes only and may not be consistent with final design configuration as shown elsewhere in the contract documents.

The boundaries between soil strata have been established only at borehole locations. Between boreholes the boundaries are assumed from geological evidence.

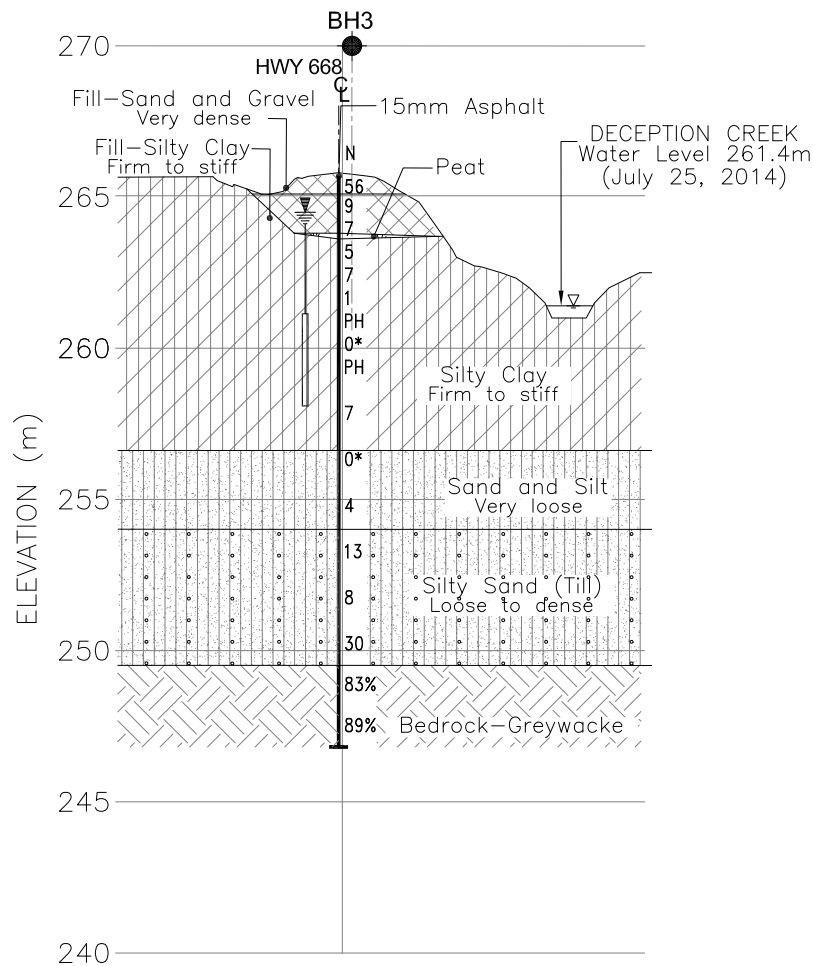
The complete foundation investigation report for this project and other related documents may be examined at the Materials Engineering and Research Office, Downsview. Information contained in this report and related documents are specifically excluded in accordance with Section GC 2.01 of OPS General Conditions.

REFERENCE

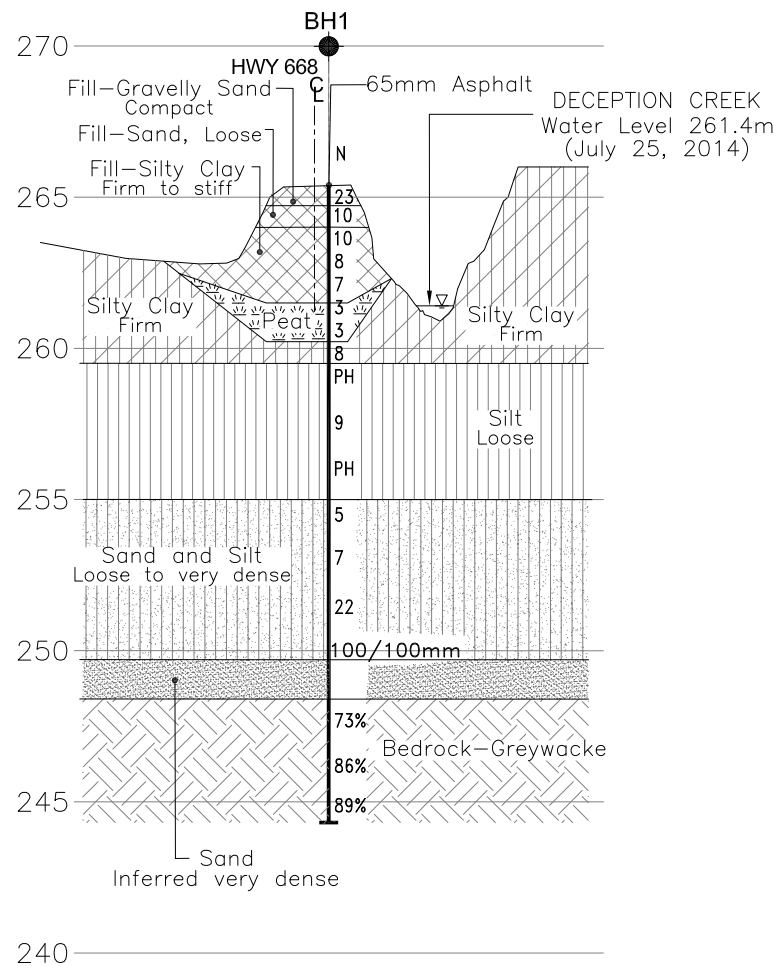
Drawings provided in digital format by MMM Group Ltd. by CD (Assignment 5013-E-0018 Preliminary Design for Rehab/Replacement of 12 Structures on Highways in New Liskeard Area) drawing files B5280668001, DTM5280668001, received September 11, 2014

REVISIONS	DATE	BY	DESCRIPTION

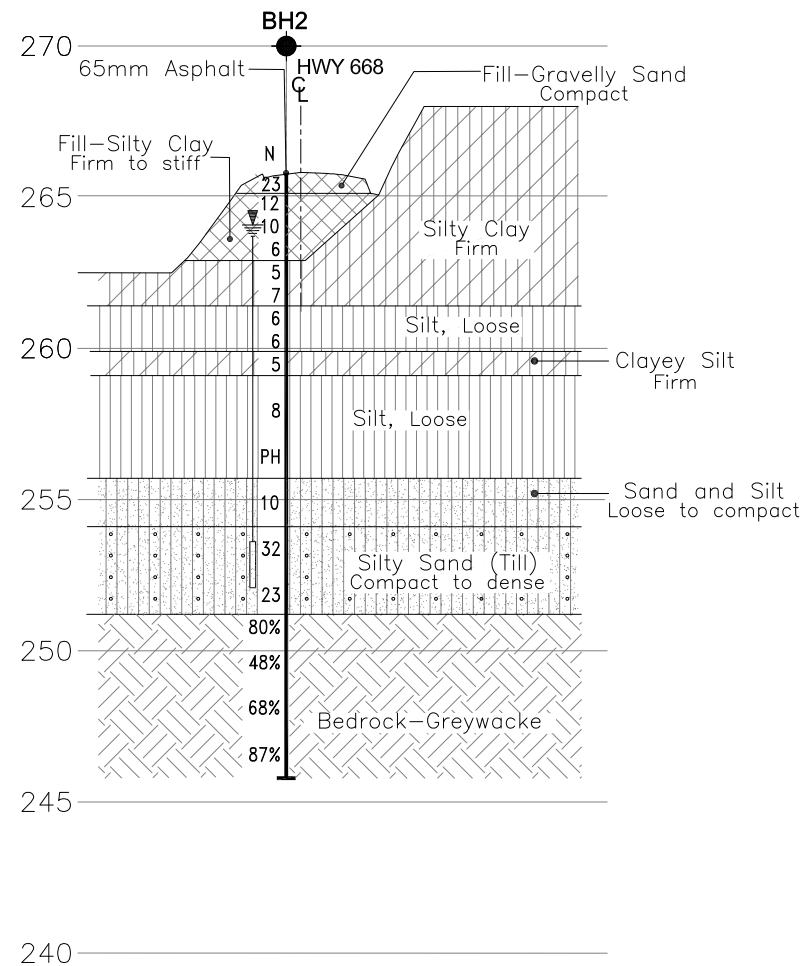
HWY. 668	PROJECT No. 1-15-0509	DIST.
SUBM'D.SD	CHKD. RA DATE: AUGUST 2016	SITE: 39E-169
DRAWN: KC	CHKD. RA APPD: MT	DWG. 2



SECTION A-A'



SECTION B-B'



SECTION C-C'

HORIZ. SCALE 10 5 0 5 10 15 20m
VERT. SCALE 2,5 0 2,5 5m

APPENDIX A
Record of Borehole Sheets



EXPLANATION OF TERMS USED IN REPORT

N VALUE: THE STANDARD PENETRATION TEST (SPT) N VALUE IS THE NUMBER OF BLOWS REQUIRED TO CAUSE A STANDARD 51mm O.D. SPLIT BARREL SAMPLER TO PENETRATE 0.3m INTO UNDISTURBED GROUND IN A BOREHOLE WHEN DRIVEN BY A HAMMER WITH A MASS OF 63.5kg. FALLING FREELY A DISTANCE OF 0.76m. FOR PENETRATIONS OF LESS THAN 0.3m N VALUES ARE INDICATED AS THE NUMBER OF BLOWS FOR THE PENETRATION ACHIEVED. AVERAGE N VALUE IS DENOTED THUS \bar{u} .

DYNAMIC CONE PENETRATION TEST: CONTINUOUS PENETRATION OF A CONICAL STEEL POINT (51mm O.D. 60° CONE ANGLE) DRIVEN BY 475J IMPACT ENERGY ON 'A' SIZE DRILL RODS. THE RESISTANCE TO CONE PENETRATION IS MEASURED AS THE NUMBER OF BLOWS FOR EACH 0.3m ADVANCE OF THE CONICAL POINT INTO THE UNDISTURBED GROUND.

SOILS ARE DESCRIBED BY THEIR COMPOSITION AND CONSISTENCY OR DENSENESS.

CONSISTENCY: COHESIVE SOILS ARE DESCRIBED ON THE BASIS OF THEIR UNDRAINED SHEAR STRENGTH (c_u) AS FOLLOWS:

c_u (kPa)	0 – 12	12 – 25	25 – 50	50 – 100	100 – 200	>200
	VERY SOFT	SOFT	FIRM	STIFF	VERY STIFF	HARD

DENSENESS: COHESIONLESS SOILS ARE DESCRIBED ON THE BASIS OF DENSENESS AS INDICATED BY SPT N VALUES AS FOLLOWS:

N (BLOWS/0.3m)	0 – 5	5 – 10	10 – 30	30 – 50	>50
	VERY LOOSE	LOOSE	COMPACT	DENSE	VERY DENSE

ROCKS ARE DESCRIBED BY THEIR COMPOSITION AND STRUCTURAL FEATURES AND/OR STRENGTH.

RECOVERY: SUM OF ALL RECOVERED ROCK CORE PIECES FROM A CORING RUN EXPRESSED AS A PERCENT OF THE TOTAL LENGTH OF THE CORING RUN.

MODIFIED RECOVERY: SUM OF THOSE INTACT CORE PIECES, 100mm+ IN LENGTH EXPRESSED AS A PERCENT OF THE LENGTH OF THE CORING RUN. THE ROCK QUALITY DESIGNATION (RQD), FOR MODIFIED RECOVERY IS:

RQD (%)	0 – 25	25 – 50	50 – 75	75 – 90	90 – 100
	VERY POOR	POOR	FAIR	GOOD	EXCELLENT

JOINTING AND BEDDING:

SPACING	50mm	50 – 300mm	0.3m – 1m	1m – 3m	>3m
JOINTING	VERY CLOSE	CLOSE	MOD. CLOSE	WIDE	VERY WIDE
BEDDING	VERY THIN	THIN	MEDIUM	THICK	VERY THICK

ABBREVIATIONS AND SYMBOLS

FIELD SAMPLING

SS	SPLIT SPOON	TP	THINWALL PISTON
WS	WASH SAMPLE	OS	OSTERBERG SAMPLE
ST	SLOTTED TUBE SAMPLE	RC	ROCK CORE
BS	BLOCK SAMPLE	PH	TW ADVANCED HYDRAULICALLY
CS	CHUNK SAMPLE	PM	TW ADVANCED MANUALLY
TW	THINWALL OPEN	FS	FOIL SAMPLE

STRESS AND STRAIN

u_w	kPa	PORE WATER PRESSURE
r_u	1	PORE PRESSURE RATIO
σ	kPa	TOTAL NORMAL STRESS
σ'	kPa	EFFECTIVE NORMAL STRESS
τ	kPa	SHEAR STRESS
$\sigma_1, \sigma_2, \sigma_3$	kPa	PRINCIPAL STRESSES
ϵ	%	LINEAR STRAIN
$\epsilon_1, \epsilon_2, \epsilon_3$	%	PRINCIPAL STRAINS
E	kPa	MODULUS OF LINEAR DEFORMATION
G	kPa	MODULUS OF SHEAR DEFORMATION
μ	1	COEFFICIENT OF FRICTION

MECHANICAL PROPERTIES OF SOIL

m_v	kPa^{-1}	COEFFICIENT OF VOLUME CHANGE
C_c	1	COMPRESSION INDEX
C_s	1	SWELLING INDEX
C_{α}	1	RATE OF SECONDARY CONSOLIDATION
C_v	m^2/s	COEFFICIENT OF CONSOLIDATION
H	m	DRAINAGE PATH
T_v	1	TIME FACTOR
U	%	DEGREE OF CONSOLIDATION
σ'_{vo}	kPa	EFFECTIVE OVERBURDEN PRESSURE
σ'_p	kPa	PRECONSOLIDATION PRESSURE
τ_f	kPa	SHEAR STRENGTH
c'	kPa	EFFECTIVE COHESION INTERCEPT
ϕ'	- °	EFFECTIVE ANGLE OF INTERNAL FRICTION
c_u	kPa	APPARENT COHESION INTERCEPT
ϕ_u	- °	APPARENT ANGLE OF INTERNAL FRICTION
τ_R	kPa	RESIDUAL SHEAR STRENGTH
τ_r	kPa	REMOULDED SHEAR STRENGTH
S_r	1	SENSITIVITY = c_u / τ_r

PHYSICAL PROPERTIES OF SOIL

ρ_s	kg/m^3	DENSITY OF SOLID PARTICLES	e	1.0%	VOID RATIO	e_{\min}	1.0%	VOID RATIO IN DENSEST STATE
γ_s	kN/m^3	UNIT WEIGHT OF SOLID PARTICLES	n	1.0%	POROSITY	I_D	1	DENSITY INDEX = $\frac{e_{\max} - e}{e_{\max} - e_{\min}}$
ρ_w	kg/m^3	DENSITY OF WATER	w	1.0%	WATER CONTENT	D	mm	GRAIN DIAMETER
γ_w	kN/m^3	UNIT WEIGHT OF WATER	S_r	%	DEGREE OF SATURATION	D_n	mm	n PERCENT - DIAMETER
ρ	kg/m^3	DENSITY OF SOIL	w_L	%	LIQUID LIMIT	C_u	1	UNIFORMITY COEFFICIENT
γ	kN/m^3	UNIT WEIGHT OF SOIL	w_p	%	PLASTIC LIMIT	h	m	HYDRAULIC HEAD OR POTENTIAL
ρ_d	kg/m^3	DENSITY OF DRY SOIL	w_S	%	SHRINKAGE LIMIT	q	m^3/s	RATE OF DISCHARGE
γ_d	kN/m^3	UNIT WEIGHT OF DRY SOIL	I_p	%	PLASTICITY INDEX = $(w_L - w_p)$	v	m/s	DISCHARGE VELOCITY
ρ_{sat}	kg/m^3	DENSITY OF SATURATED SOIL	I_L	1	LIQUIDITY INDEX = $(w - w_p)/I_p$	i	1	HYDRAULIC GRADIENT
γ_{sat}	kN/m^3	UNIT WEIGHT OF SATURATED SOIL	I_C	1	CONSISTENCY INDEX = $(w_L - w)/I_p$	k	m/s	HYDRAULIC CONDUCTIVITY
ρ'	kg/m^3	DENSITY OF SUBMERGED SOIL	e_{\max}	1.0%	VOID RATIO IN LOOSEST STATE	j	kN/m^3	SEEPAGE FORCE
γ'	kN/m^3	UNIT WEIGHT OF SUBMERGED SOIL						

RECORD OF BOREHOLE No 1

1 of 2

METRIC

G.W.P. 5267-11-00 LOCATION Coords: E:284923.2 N:5441652.1 ORIGINATED BY SD
 DIST HWY 668 BOREHOLE TYPE SOLID STEM AUGERS / NW CASING AND WASH BORING / NQ CORING COMPILED BY SD
 DATUM GEODETIC DATE 2015-9-15 - 2015-9-16 CHECKED BY RA

SOIL PROFILE			SAMPLES			GROUND WATER CONDITIONS	ELEVATION SCALE	DYNAMIC CONE PENETRATION RESISTANCE PLOT					PLASTIC LIMIT NATURAL MOISTURE CONTENT LIQUID LIMIT			UNIT WEIGHT γ kN/m ³	REMARKS & GRAIN SIZE DISTRIBUTION (%)
ELEV DEPTH (m)	DESCRIPTION	STRAT PLOT	NUMBER	TYPE	SPT 'N' VALUE			20 40 60 80 100					w _p w w _L				
								SHEAR STRENGTH (kPa)					WATER CONTENT (%)				
								○ UNCONFINED + FIELD VANE ● QUICK TRIAXIAL X LAB VANE									
265.4	GROUND SURFACE																
264.7	65mm ASPHALTIC CONCRETE		1	SS	23												
0.7	615mm FILL, gravelly sand, some silt, trace clay, compact, brown, moist		2	SS	10										13 63 14 10		
264.0	FILL, sand, some gravel, some silt, trace clay, loose, brown, moist																
1.4	FILL, silty clay, trace gravel, some sand, firm to stiff, brown to 2.9m, grey below, moist		3	SS	10												
			4	SS	8										1 15 54 30		
			5	SS	7												
261.5																	
3.9	PEAT, amorphous and wood pieces, black		6	SS	3												
			7	SS	3												
260.2																	
5.2	SILTY CLAY, frequent silt seams and partings, firm, grey, moist		8	SS	8												
259.5																	
5.9	SILT, trace to some clay, loose, grey, wet		9	TW	PH										0 1 81 18		
			10	SS	9										0 0 83 17		
			11	TW	PH										0 0 93 7		
255.0																	
10.4	SAND AND SILT, trace to some gravel, trace clay, with cobbles and boulders, loose, grey, wet		12	SS	5										5 47 43 5		
			13	SS	7												
			14	RC													
			15	SS	22												
			</														

Continued Next Page

+³, X³: Numbers refer to Sensitivity O 3% STRAIN AT FAILURE

RECORD OF BOREHOLE No 1

2 of 2

METRIC

G.W.P. 5267-11-00 LOCATION Coords: E:284923.2 N:5441652.1 ORIGINATED BY SD
 DIST HWY 668 BOREHOLE TYPE SOLID STEM AUGERS / NW CASING AND WASH BORING / NQ CORING COMPILED BY SD
 DATUM GEODETIC DATE 2015-9-15 - 2015-9-16 CHECKED BY RA

SOIL PROFILE			SAMPLES			GROUND WATER CONDITIONS	ELEVATION SCALE	DYNAMIC CONE PENETRATION RESISTANCE PLOT					PLASTIC LIMIT W _p	NATURAL MOISTURE CONTENT W	LIQUID LIMIT W _L	UNIT WEIGHT γ kN/m ³	REMARKS & GRAIN SIZE DISTRIBUTION (%) GR SA SI CL
ELEV DEPTH (m)	DESCRIPTION	STRAT PLOT	NUMBER	TYPE	SPT 'N' VALUE			SHEAR STRENGTH (kPa)									
								20	40	60	80	100					

</

END OF BOREHOLE

Borehole filled with drill water upon completion of drilling.

Soil heaved into casings after completing RC17.

Borehole grouted and sealed with bentonite slurry after drilling was completed.

Atterberg Limits test attempted on TW9, SS10 and TW11. Samples are non-plastic.

*Uniaxial Compressive Strength determined from Point Load Strength Index values.

RECORD OF BOREHOLE No 2

1 of 2

METRIC

G.W.P. 5267-11-00 LOCATION Coords: E:284919.6 N:5441691.7 ORIGINATED BY SD
 DIST HWY 668 BOREHOLE TYPE SOLID STEM AUGERS / NW CASING AND WASH BORING / NQ CORING COMPILED BY SD
 DATUM GEODETIC DATE 2015-9-14 CHECKED BY RA

SOIL PROFILE			SAMPLES			GROUND WATER CONDITIONS	ELEVATION SCALE	DYNAMIC CONE PENETRATION RESISTANCE PLOT					PLASTIC LIMIT NATURAL MOISTURE CONTENT LIQUID LIMIT			UNIT WEIGHT γ kN/m ³	REMARKS & GRAIN SIZE DISTRIBUTION (%)			
ELEV DEPTH (m)	DESCRIPTION	STRAT PLOT	NUMBER	TYPE	SPT 'N' VALUE			20 40 60 80 100					W _P	W	W _L					
								SHEAR STRENGTH (kPa)										WATER CONTENT (%)		
								○ UNCONFINED ● QUICK TRIAXIAL										+ FIELD VANE X LAB VANE		
265.8	GROUND SURFACE															GR SA SI CL				
265.1	65mm ASPHALTIC CONCRETE		1	SS	23											24 58 12 6				
0.7	605mm FILL, gravelly sand, some silt, trace clay, compact, brown, moist		2	SS	12															
	FILL, silty clay, trace sand, firm to stiff, brown, moist		3	SS	10															
			4	SS	6															
262.9																				
2.9	SILTY CLAY, trace sand, firm, grey, wet		5	SS	5											0 8 38 54				
			6	SS	7															
261.4																				
4.4	SILT, occasional clay seams and partings, loose, grey, wet		7	SS	6											0 0 86 14				
			8	SS	6															
259.9																				
5.9	CLAYEY SILT, trace sand, firm, grey, wet		9	SS	5											0 1 76 23				
259.1																				
6.7	SILT, trace to some clay, loose, grey, wet																			
			10	SS	8															
			11	TW	PH											0 3 82 15				
255.7																				
10.1	SAND AND SILT, trace to some gravel, loose to compact, grey, wet		12	SS	10															
254.1																				
11.7	SILTY SAND, trace to some gravel, occasional cobbles, compact to dense, grey, wet (GLACIAL TILL)		13	SS	32															
			14	SS	23															
251.2																				
14.6			1	RUN												Run #1 TCP: 100%				

file: 1-150509-01 deception creek bh logs.gpj

Continued Next Page

+³, X³: Numbers refer to Sensitivity O³% STRAIN AT FAILURE

RECORD OF BOREHOLE No 2

2 of 2

METRIC

G.W.P. 5267-11-00 LOCATION Coords: E:284919.6 N:5441691.7 ORIGINATED BY SD
 DIST HWY 668 BOREHOLE TYPE SOLID STEM AUGERS / NW CASING AND WASH BORING / NQ CORING COMPILED BY SD
 DATUM GEODETIC DATE 2015-9-14 CHECKED BY RA

SOIL PROFILE			SAMPLES			GROUND WATER CONDITIONS	ELEVATION SCALE	DYNAMIC CONE PENETRATION RESISTANCE PLOT					PLASTIC LIMIT W _p	NATURAL MOISTURE CONTENT W	LIQUID LIMIT W _L	UNIT WEIGHT γ	REMARKS & GRAIN SIZE DISTRIBUTION (%)			
ELEV DEPTH (m)	DESCRIPTION	STRAT PLOT	NUMBER	TYPE	SPT N' VALUE			SHEAR STRENGTH (kPa)										WATER CONTENT (%)		
								20 40 60 80 100										10 20 30		
								○ UNCONFINED + FIELD VANE ● QUICK TRIAXIAL × LAB VANE												
245.8	(continued) BEDROCK - GREYWACKE containing quartz veins, unweathered, thickly bedded, light grey to grey, strong to extremely strong		1	RUN												SCR: 82% RQD: 80% UCS*= 97 - 248 (MPa) Run #2 TCR: 81% SCR: 77% RQD: 48% UCS*= 150 - 257 (MPa) Run #3 TCR: 100% SCR: 93% RQD: 68% UCS*= 112 - 225 (MPa) Run #4 TCR: 94% SCR: 92% RQD: 87% UCS*= 90 - 195 (MPa)				
			2	RUN																
			3	RUN																
			4	RUN																

END OF BOREHOLE

Piezometer installation consists of a 50mm diameter PVC pipe with a 1.5m slotted screen.

Unable to push vane below 7.0m.

Atterberg Limits test attempted on SS7 and TW11. Samples are non-plastic

*Uniaxial Compressive Strength determined from Point Load Strength Index values.

WATER LEVEL READINGS

Date	Water Depth (m)	Elevation (m)
Oct 1, 2015	1.7	264.1
Oct 7, 2015	1.8	264.0

RECORD OF BOREHOLE No 3

1 of 2

METRIC

G.W.P. 5267-11-00 LOCATION Coords: E:284922.9 N:5441584.6 ORIGINATED BY SD
 DIST HWY 668 BOREHOLE TYPE HOLLOW STEM AUGERS / NW CASING AND WASH BORING / NQ CORING COMPILED BY SD
 DATUM GEODETIC DATE 2015-9-16 - 2015-9-17 CHECKED BY RA

SOIL PROFILE			SAMPLES			GROUND WATER CONDITIONS	ELEVATION SCALE	DYNAMIC CONE PENETRATION RESISTANCE PLOT		PLASTIC NATURAL LIQUID LIMIT MOISTURE CONTENT LIMIT			UNIT WEIGHT γ kN/m ³	REMARKS & GRAIN SIZE DISTRIBUTION (%)			
ELEV DEPTH (m)	DESCRIPTION	STRAT PLOT	NUMBER	TYPE	SPT 'N' VALUE			SHEAR STRENGTH (kPa)							WATER CONTENT (%)		
								20 40 60 80 100							w _p w w _L		
							○ UNCONFINED + FIELD VANE ● QUICK TRIAXIAL X LAB VANE										
265.7	GROUND SURFACE							20	40	60	80	100				GR SA SI CL	
265.1	15mm ASPHALTIC CONCRETE		1	SS	56												
0.6	590mm FILL, sand and gravel, trace silt, very dense, brown, dry		2	SS	9												
	FILL, silty clay, trace sand, trace gravel, firm to stiff, brown, moist																
263.8			3	SS	7												
1.9	PEAT, amorphous, black													49			
263.6	SILTY CLAY, trace sand, trace gravel, firm to stiff, brown to 4.1m, grey below, occasional silt seams and partings, moist to wet		4	SS	5											0 7 53 40	
2.1																	
			5	SS	7												
			6	SS	1											1 9 46 44	
			7	TW	PH											0 6 47 47	
			8	SS	0*											0 1 26 73	
			9	TW	PH											0 0 53 47	
			10	SS	7												
256.6	SAND AND SILT, trace gravel, trace clay, very loose, grey, wet		11	SS	0*												
9.1																	
			12	SS	4											4 59 33 4	
254.0	SILTY SAND, trace to some gravel, occasional cobbles, loose to dense, grey, wet (GLACIAL TILL)		13	SS	13											commence NW casing and wash boring	
11.7																	
			14	SS	8												
											</						

Continued Next Page



+³, ×³: Numbers refer to Sensitivity ○ 3% STRAIN AT FAILURE

RECORD OF BOREHOLE No 3

2 of 2

METRIC

G.W.P. 5267-11-00 LOCATION Coords: E:284922.9 N:5441584.6 ORIGINATED BY SD
 DIST HWY 668 BOREHOLE TYPE HOLLOW STEM AUGERS / NW CASING AND WASH BORING / NQ CORING COMPILED BY SD
 DATUM GEODETIC DATE 2015-9-16 - 2015-9-17 CHECKED BY RA

SOIL PROFILE			SAMPLES			GROUND WATER CONDITIONS	ELEVATION SCALE	DYNAMIC CONE PENETRATION RESISTANCE PLOT					UNIT WEIGHT γ kN/m ³	REMARKS & GRAIN SIZE DISTRIBUTION (%)	
ELEV DEPTH (m)	DESCRIPTION	STRAT PLOT	NUMBER	TYPE	SPT 'N' VALUE			20 40 60 80 100							
								SHEAR STRENGTH (kPa)							
								○ UNCONFINED + FIELD VANE ● QUICK TRIAXIAL X LAB VANE							
								20 40 60 80 100							
								PLASTIC NATURAL LIQUID LIMIT MOISTURE LIMIT CONTENT							
								W _p W W _L							
								WATER CONTENT (%)							
10 20 30															
(continued)															
249.5 16.2	SILTY SAND, trace to some gravel, occasional cobbles, loose to dense, grey, wet (GLACIAL TILL)		15	SS	30		250								29 37 28 6
	BEDROCK - GREYWACKE containing quartz veins, unweathered, thickly bedded, light grey to grey, strong to extremely strong		1	RUN			249								Run #1 TCR: 99% SCR: 99% RQD: 83% UCS**= 99 - 285 (MPa)
							248								
							247								
246.8															

END OF BOREHOLE

*Sampler sinking under weight of hammer and/ or rods.

Piezometer installation consists of a 50mm diameter PVC pipe with a 3.0m slotted screen.

Piezometer installed 0.3m east and 1.8m north of this borehole on September 17, 2015.

Consolidation test performed on TW9.

**Uniaxial Compressive Strength determined from Point Load Strength Index values.

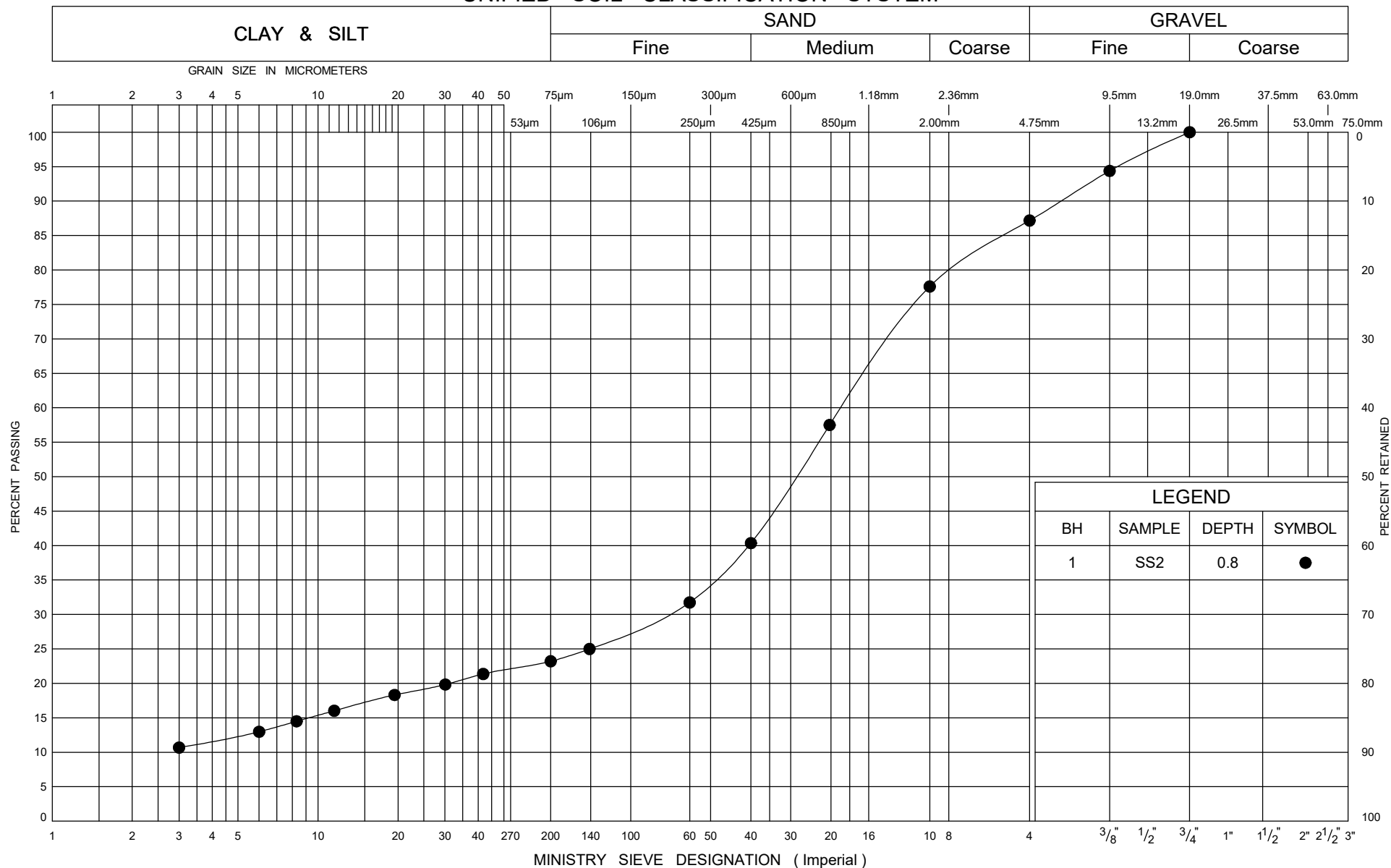
WATER LEVEL READINGS

Date	Water Depth (m)	Elevation (m)
Sep 28, 2015	1.2	264.5
Oct 9, 2015	1.3	264.4

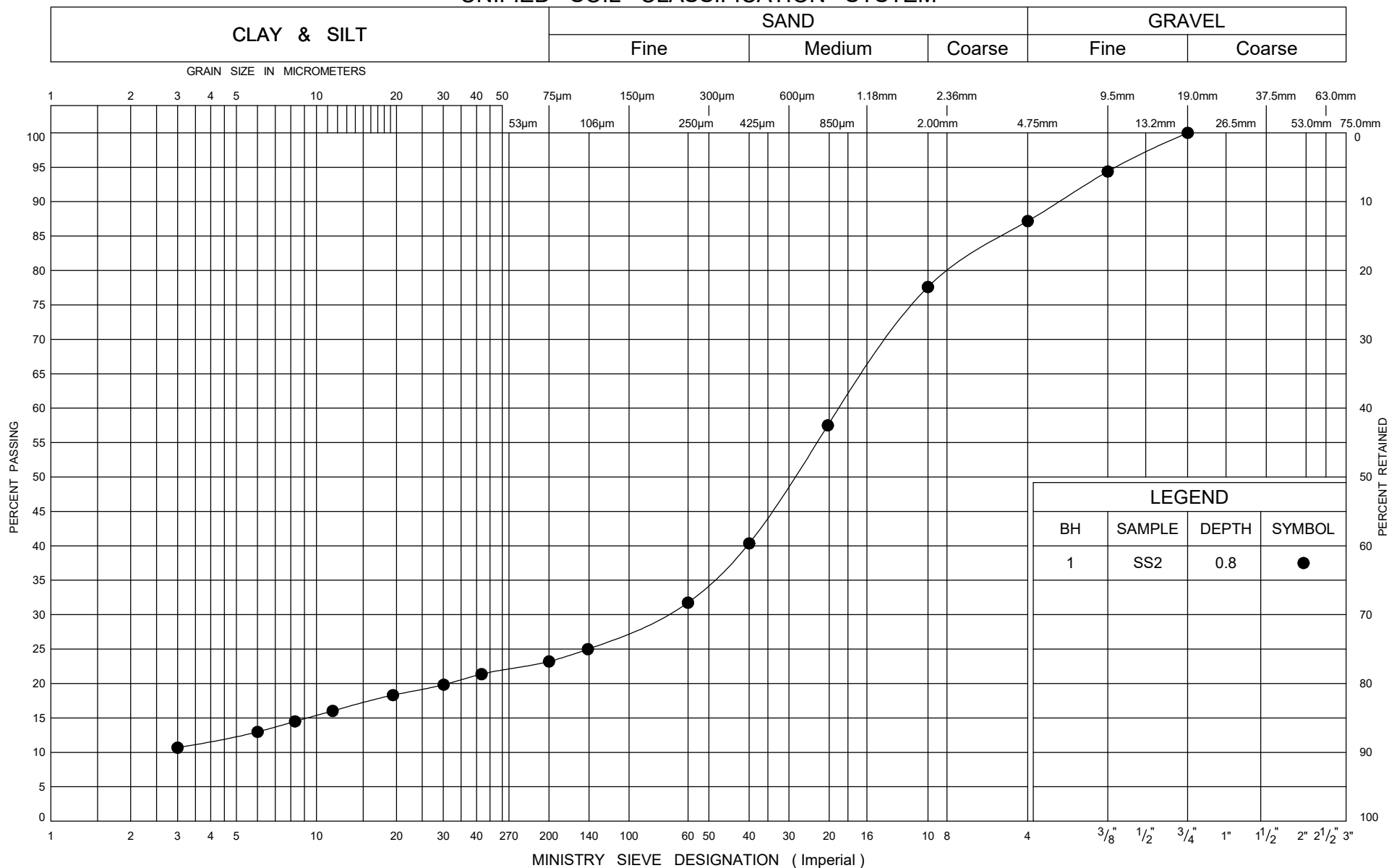
APPENDIX B
Field & Laboratory Test Results
&
Photographs



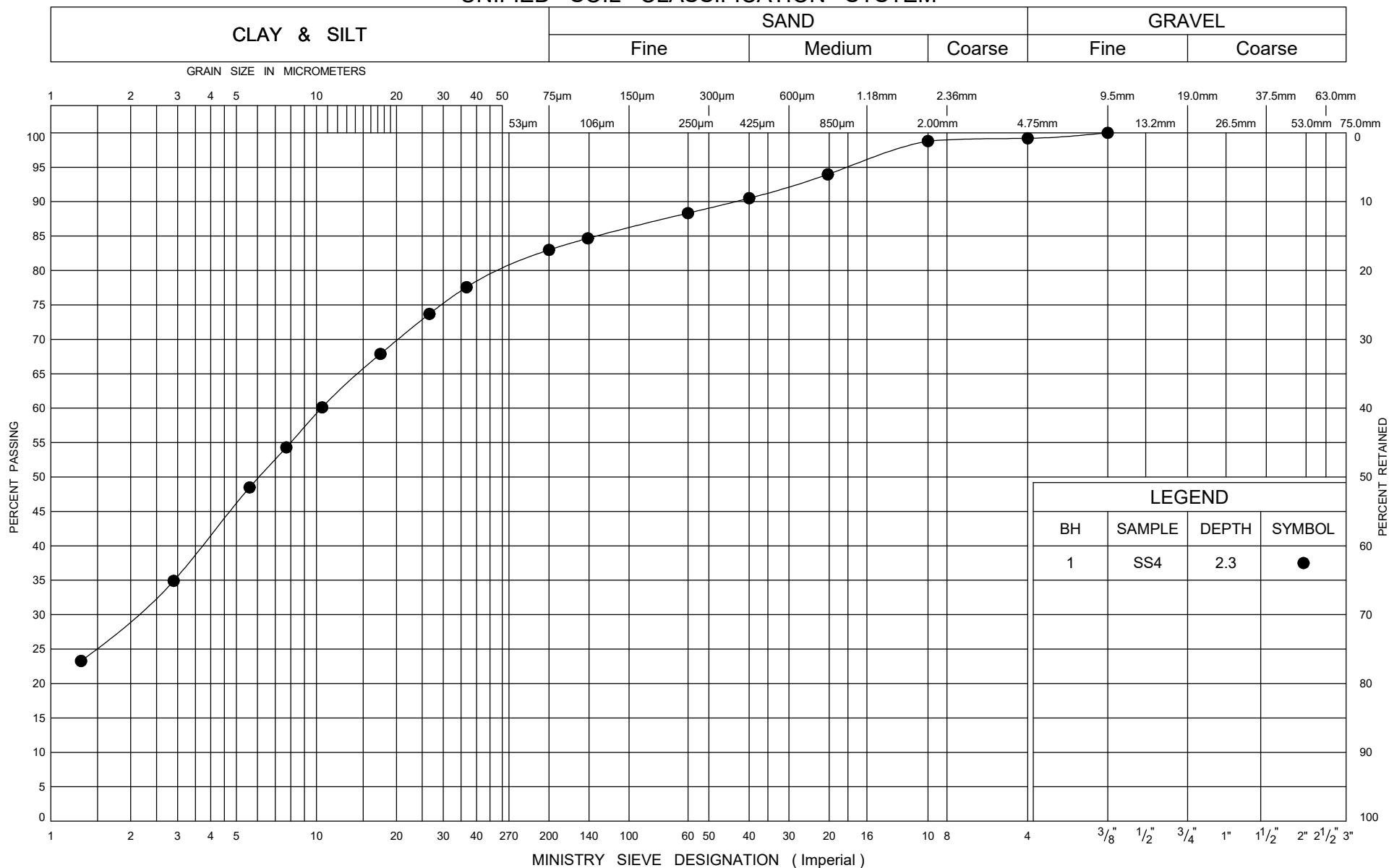
UNIFIED SOIL CLASSIFICATION SYSTEM

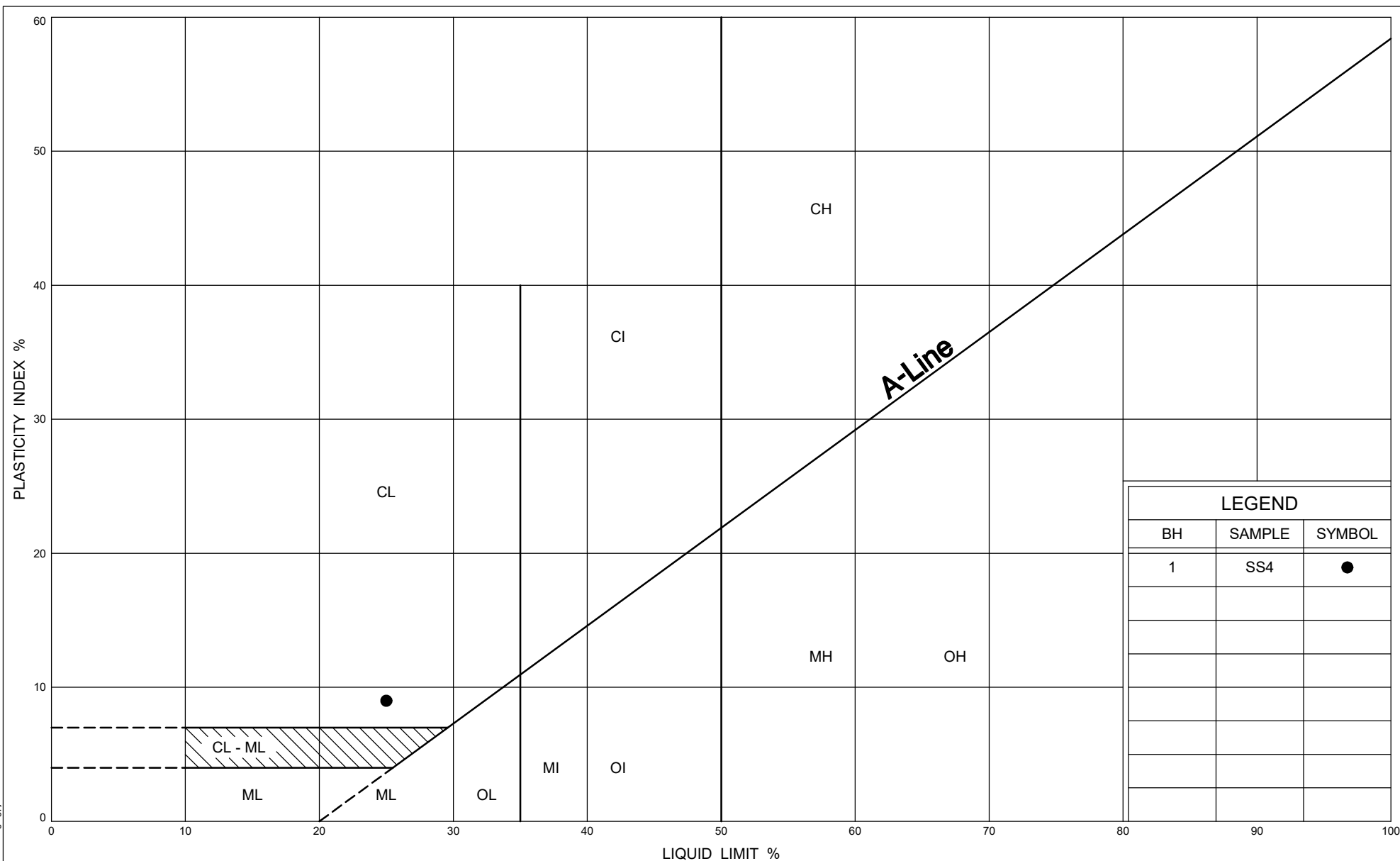


UNIFIED SOIL CLASSIFICATION SYSTEM



UNIFIED SOIL CLASSIFICATION SYSTEM

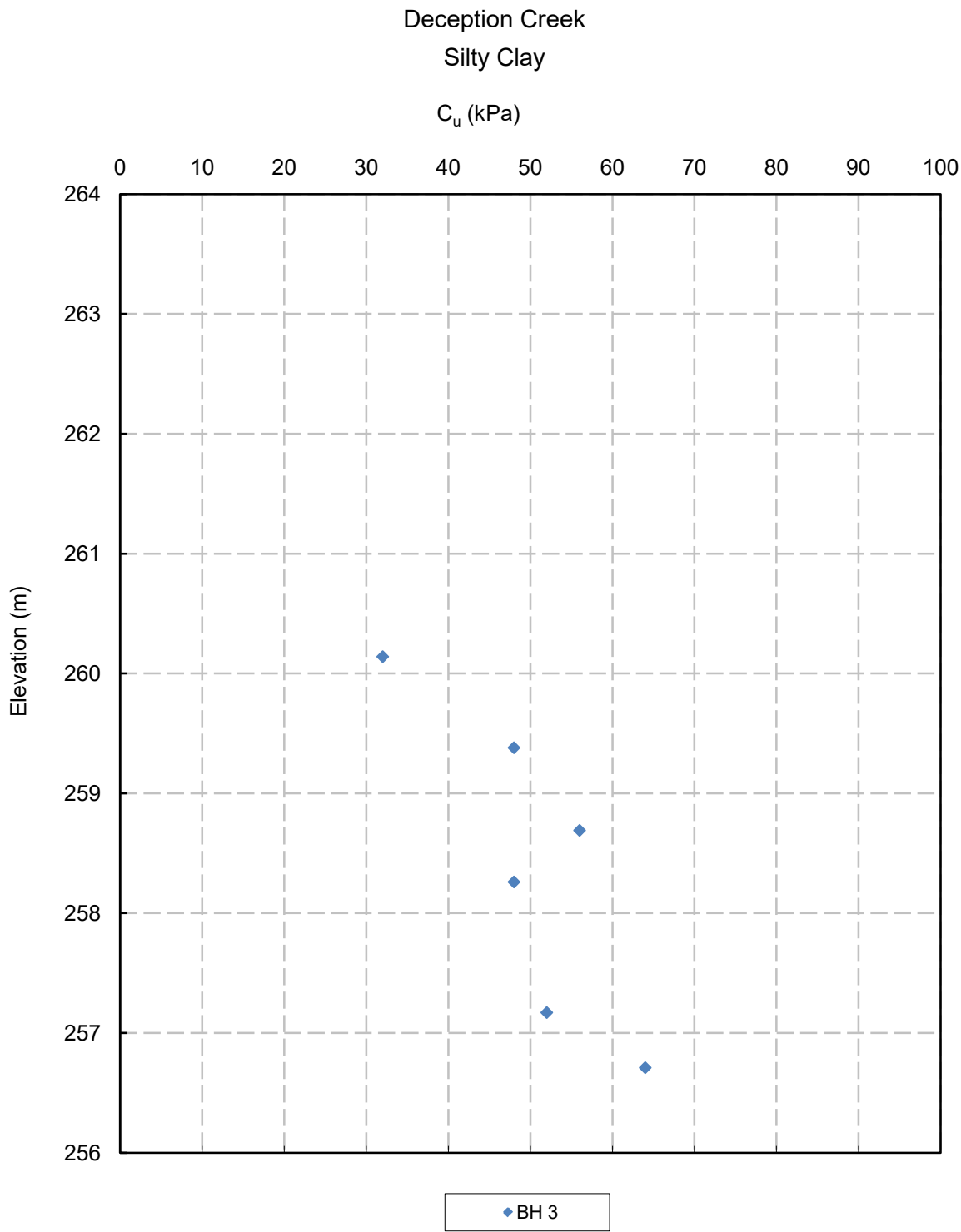




file: 1-15-0509-01 deception creek bh logs.gpj

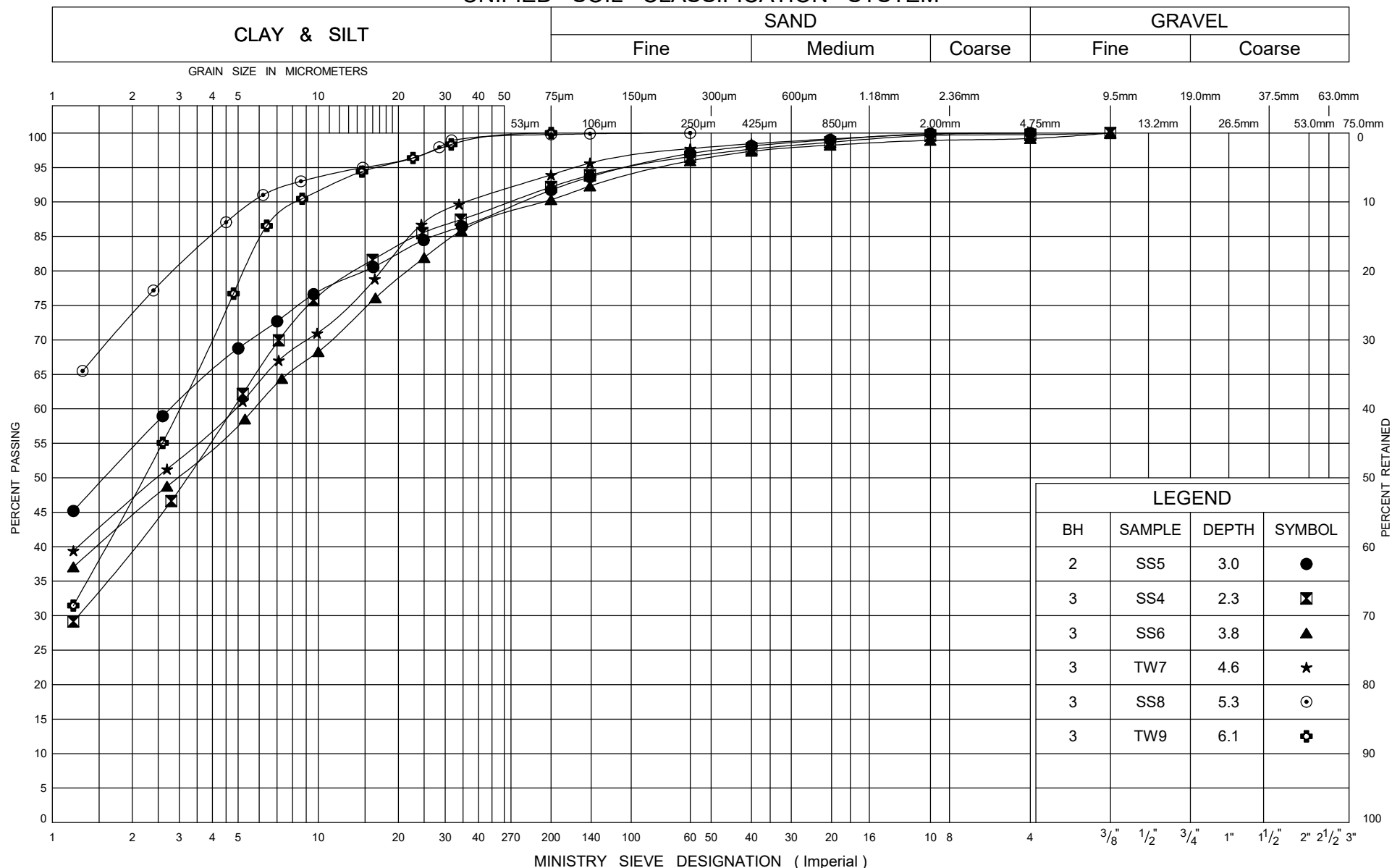
UNDRAINED SHEAR STRENGTH

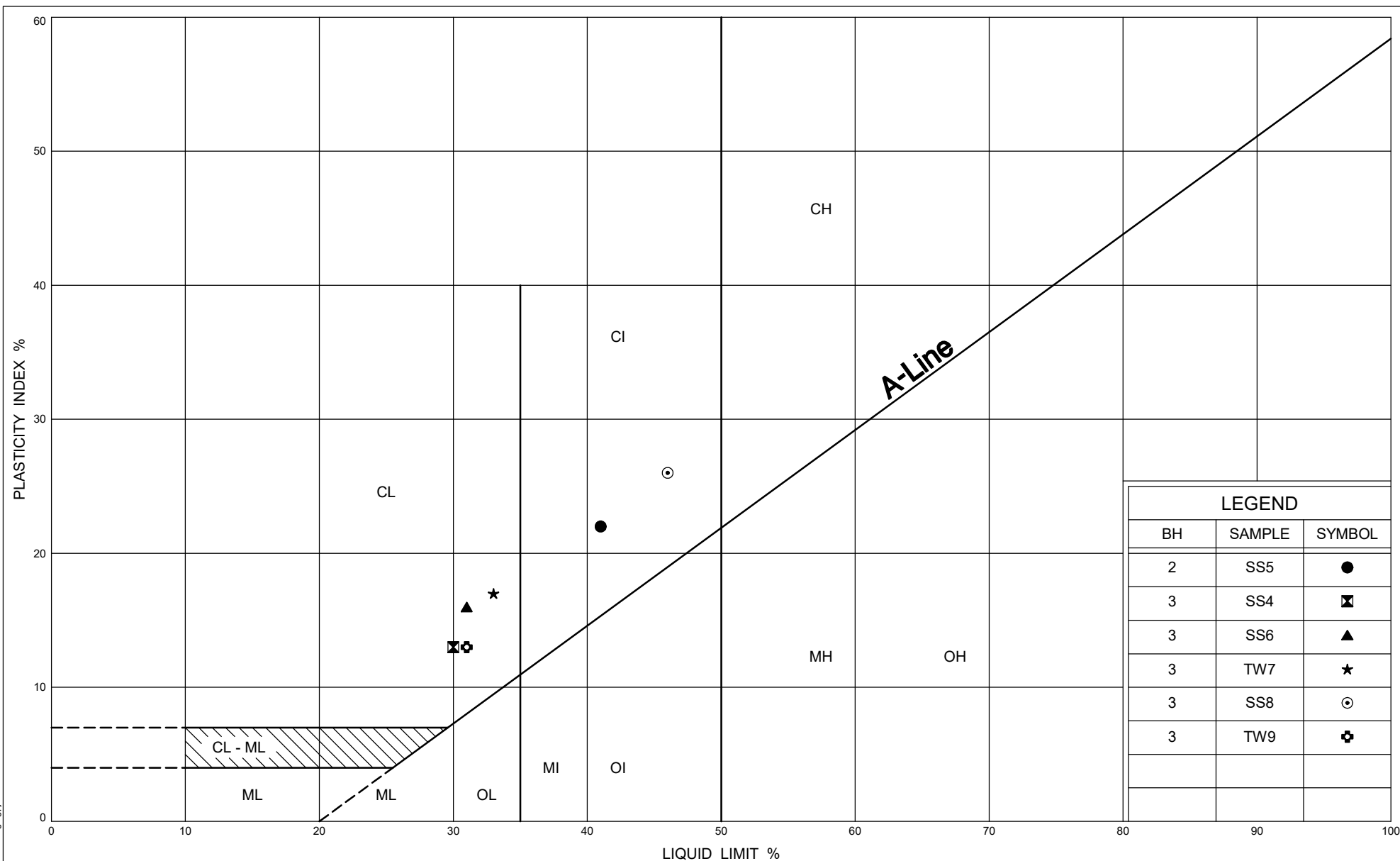
FIGURE B5



F:\2015\1-15-0509\Deception Creek Bridge\e0-P\c-Cc-Cr-Cu - Deception Creek.xlsx

UNIFIED SOIL CLASSIFICATION SYSTEM





Ministry of
Transportation

PLASTICITY CHART SILTY CLAY

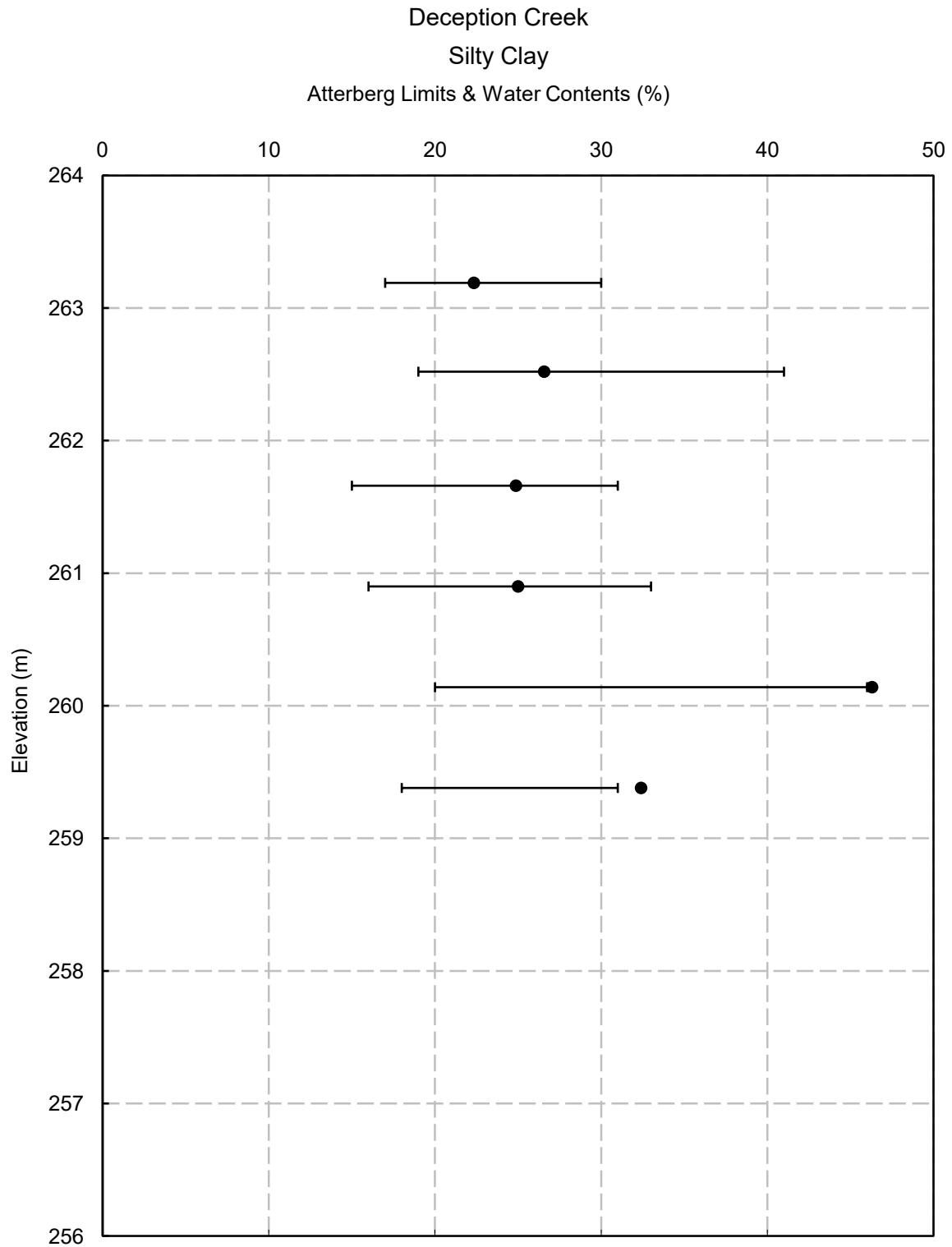
FIG No B7

G W P 5267-11-00

New Liskeard Area

ATTERBERG LIMITS AND WATER CONTENTS

FIGURE B8




F:\2015\1-15-0509\Deception Creek Bridge\0-Pc-Cc-Cr-Cu - Deception Creek.xlsx

Project No. : 1-15-0509
Date : August, 2016



Prepared by : SD
Checked by : RA

CONSOLIDATION TEST SUMMARY				FIGURE B9			
SAMPLE IDENTIFICATION							
Borehole No. :		3		Sample No. :		TW9	
				Sample Depth (m) :		6.1 - 6.6	
TEST CONDITIONS							
Test Type :		Laboratory Standard		Date Started :		5-Jan-16	
Load Duration (hr) :		24		Date Completed :		18-Jan-16	
SAMPLE DIMENSIONS AND PROPERTIES _ INITIAL							
Sample Height (mm) :		19.04		Unit Weight (kN/m ³) :		19.26	
Sample Diameter (mm) :		63.44		Dry Unit Weight (kN/m ³) :		14.55	
Area (cm ²) :		31.61		Specific Gravity :		2.72	
Volume (cm ³) :		60.18		Solid Height (mm) :		10.4	
Water Content (%) :		32.4%		Volume of Solids (cm ³) :		32.88	
Wet Mass (g) :		118.17		Volume of Voids (cm ³) :		27.31	
Dry Mass (g) :		89.30		Degree of Saturation (%) :		105.73	
TEST COMPUTATIONS							
Stress (kPa)	Initial Height (mm)	Final Height (mm)	Void Ratio	t ₉₀ (min)	C _v (cm ² /s)	m _v (m ² /kN)	k (cm/s)
1.566	19.04	19.04	0.831				
18.7	19.04	18.82	0.810	16.00	7.84E-04	6.62E-04	5.10E-08
35.83	18.82	18.79	0.806	9.00	1.39E-03	1.18E-04	1.60E-08
70.09	18.79	18.58	0.787	16.00	7.64E-04	3.14E-04	2.35E-08
138.6	18.58	18.25	0.755	7.56	1.56E-03	2.61E-04	4.00E-08
275.7	18.25	17.60	0.692	9.00	1.22E-03	2.62E-04	3.15E-08
549.8	17.60	16.84	0.619	12.25	8.25E-04	1.57E-04	1.27E-08
1098.0	16.84	16.22	0.559	5.06	1.85E-03	6.74E-05	1.22E-08
2194.4	16.22	15.60	0.500	4.00	2.17E-03	3.50E-05	7.43E-09
275.7	15.60	15.67	0.506				
70.09	15.67	15.89	0.528				
18.7	15.89	16.19	0.556				
SAMPLE DIMENSIONS AND PROPERTIES _ FINAL							
Sample Height (mm) :		16.19		Unit Weight (kN/m ³) :		20.75	
Sample Diameter (mm) :		63.44		Dry Unit Weight (kN/m ³) :		16.63	
Area (cm ²) :		31.61		Specific Gravity :		2.72	
Volume (cm ³) :		51.18		Solid Height (mm) :		7.73	
Water Content (%) :		24.90		Volume of Solids (cm ³) :		31.95	
Wet Mass (g) :		108.30		Volume of Voids (cm ³) :		19.23	
Dry Mass (g) :		86.77					
Project No. : 1-15-0509				 Terraprobe Inc.		Prepared By : SD	
Date : August 2016						Checked By : RA	

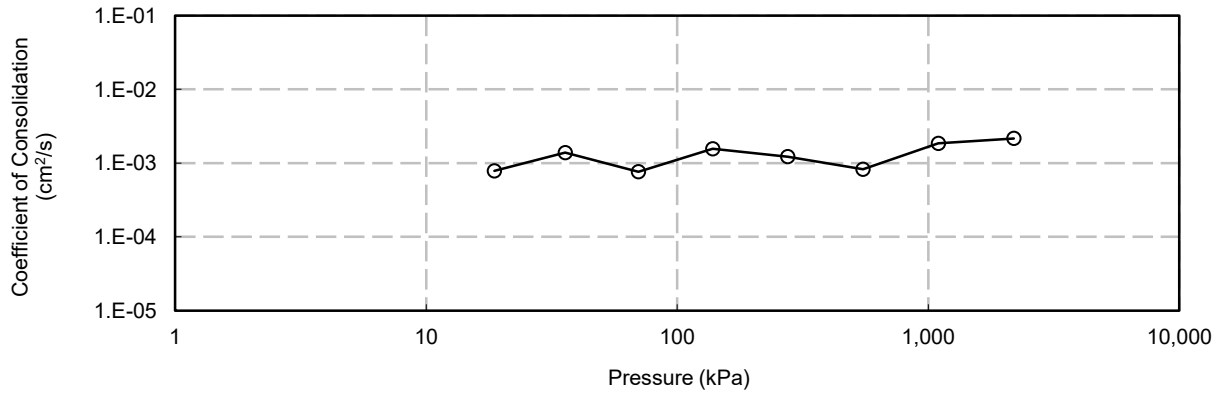
F:\2015\1-15-0509\Deception Creek Bridge\Consolidation Results - Deception Creek.xlsx

CONSOLIDATION TEST

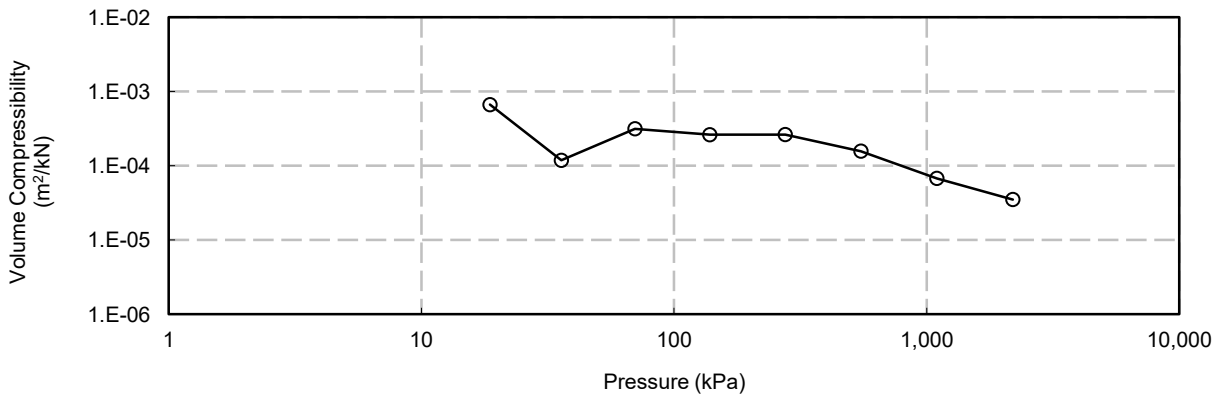
FIGURE B10

Site: Deception Creek
Sample # : BH3 TW9

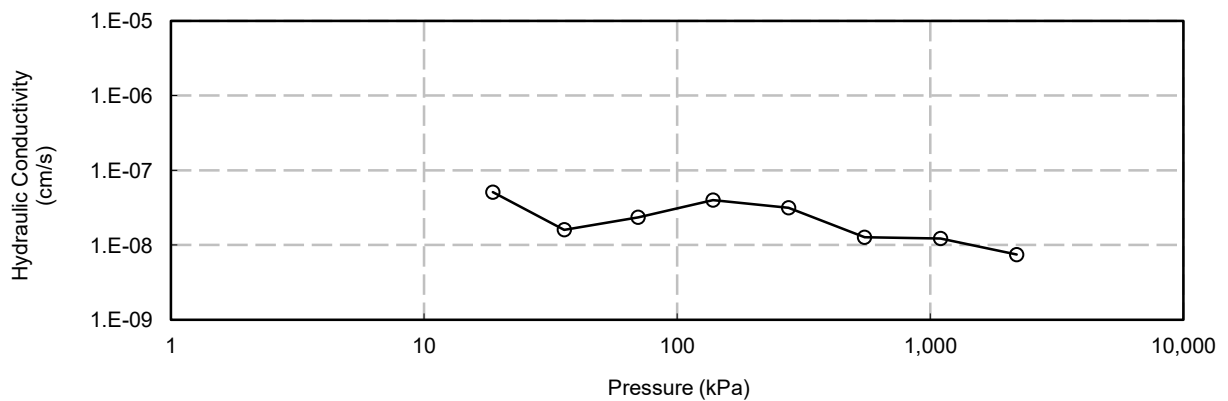
C_v vs Pressure



m_v vs Pressure



k vs Pressure



F:\2015\1-15-0509\Deception Creek Bridge\Consolidation Results - Deception Creek.xlsx

Project No. : 1-15-0509
Date : August 2016



Prepared By : SD
Checked By : RA

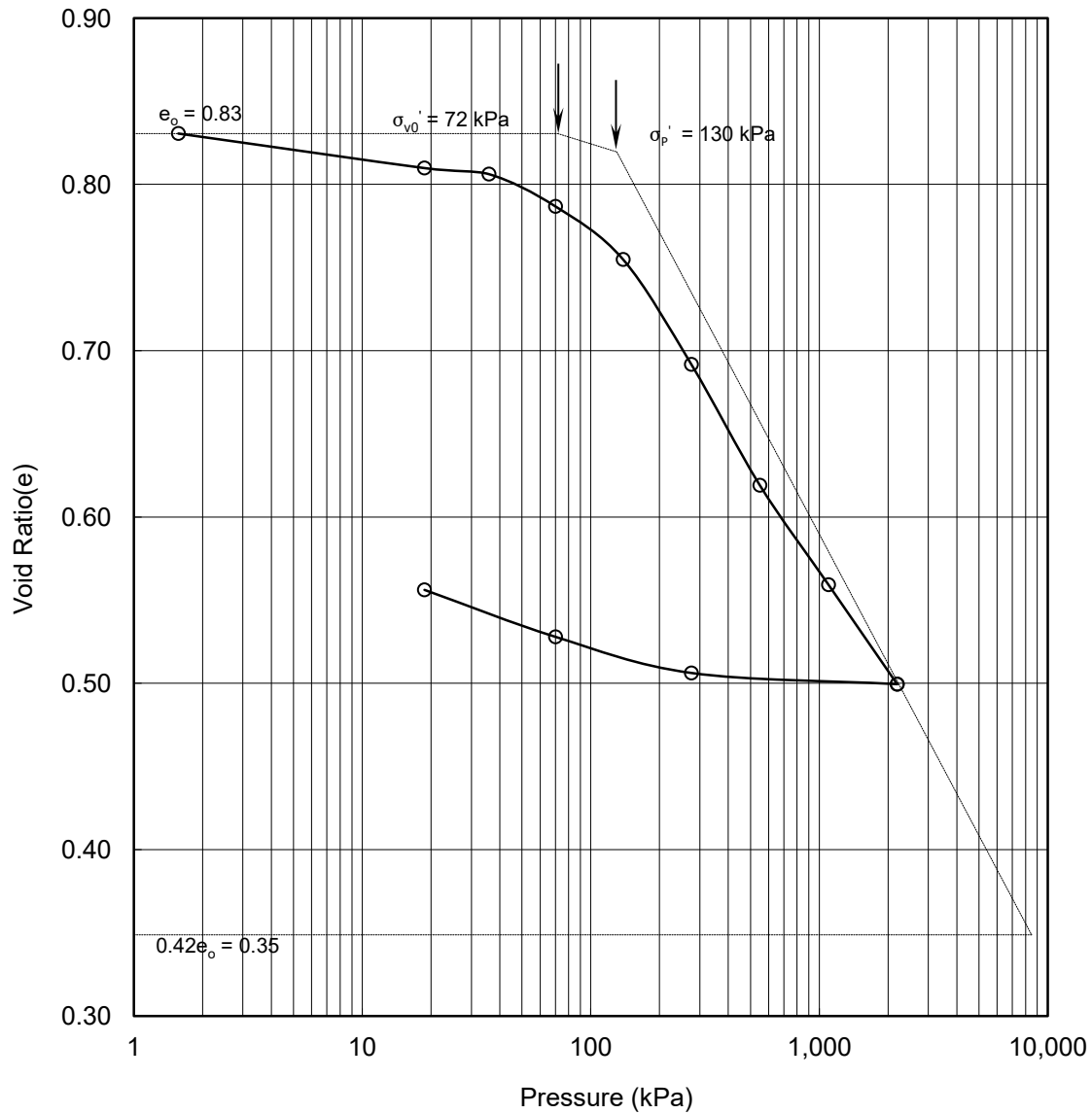
CONSOLIDATION TEST

FIGURE B11

Site: Deception Creek

Sample # : BH3 TW9

Void Ratio vs Pressure



Soil Type : Silty Clay to Clay

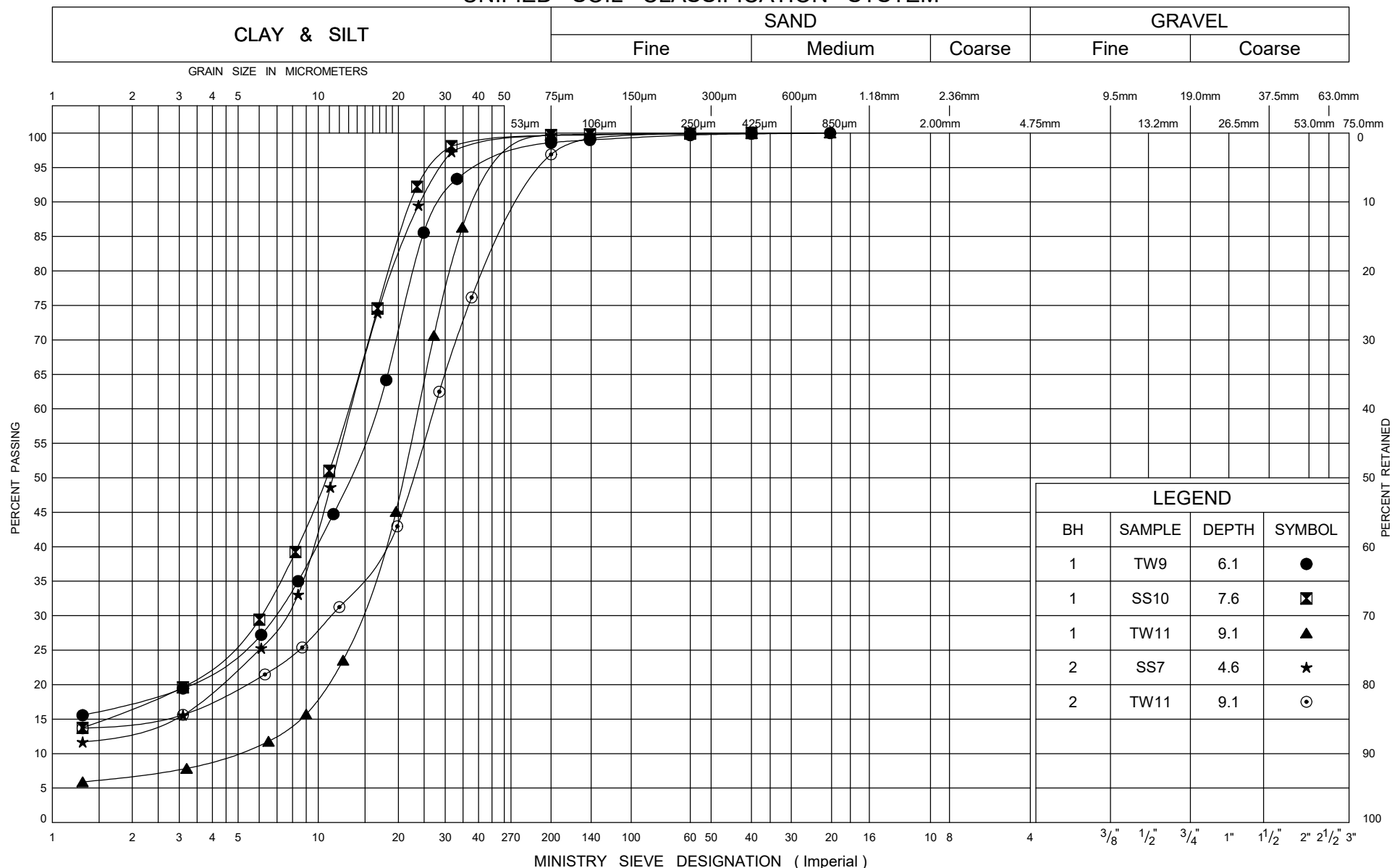
$e_0 =$	0.83	$\omega_L =$	31%	$\sigma_{v0}' =$	71.7 kPa
$\omega =$	32%	$\omega_P =$	18%	$\sigma_P' =$	130.0 kPa
$\gamma =$	19.3 kN/m ³	PI =	13%	$C_c =$	0.259
Gs =	2.72			$C_r =$	0.043

Project No. : 1-15-0509
Date : August 2016

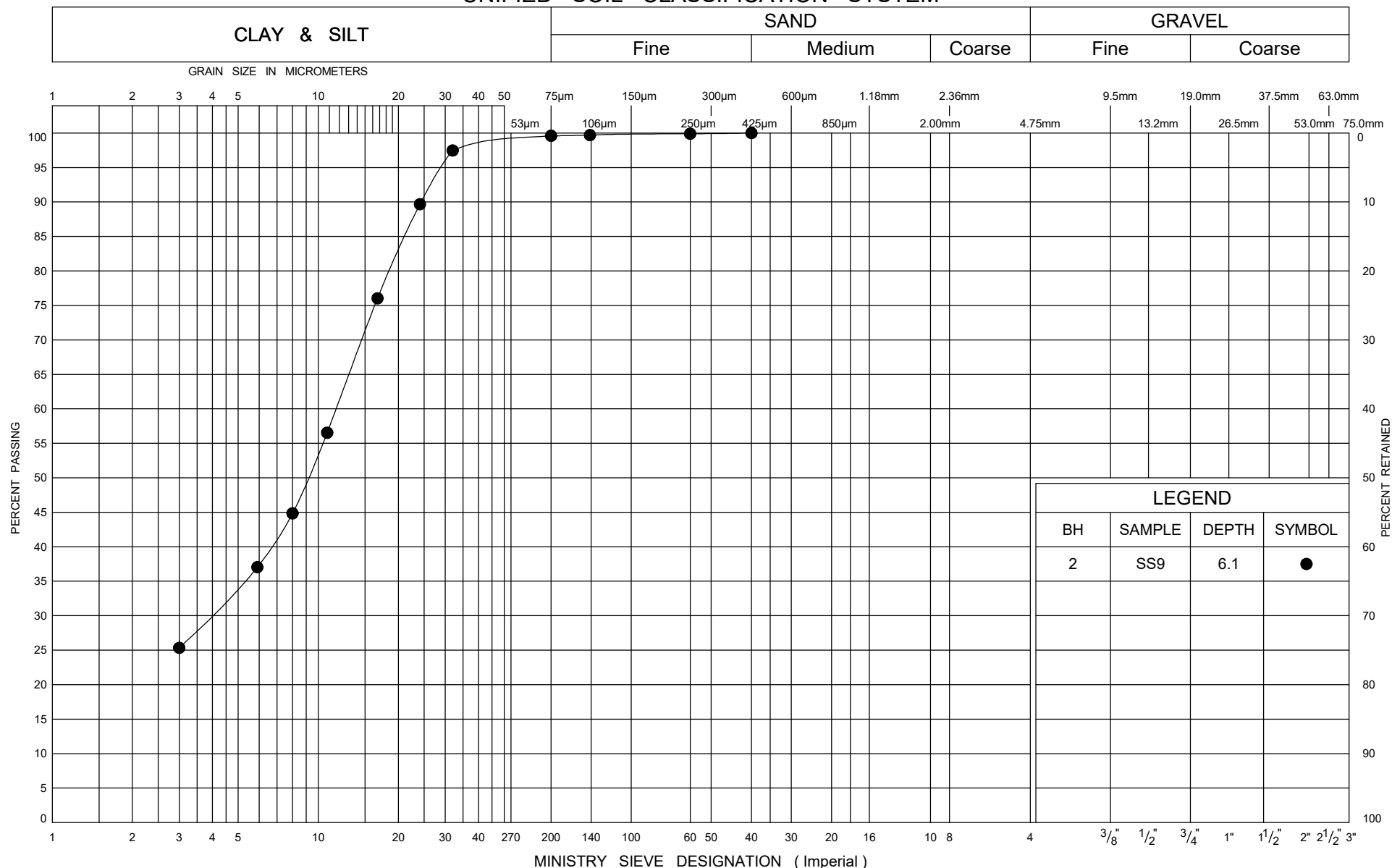


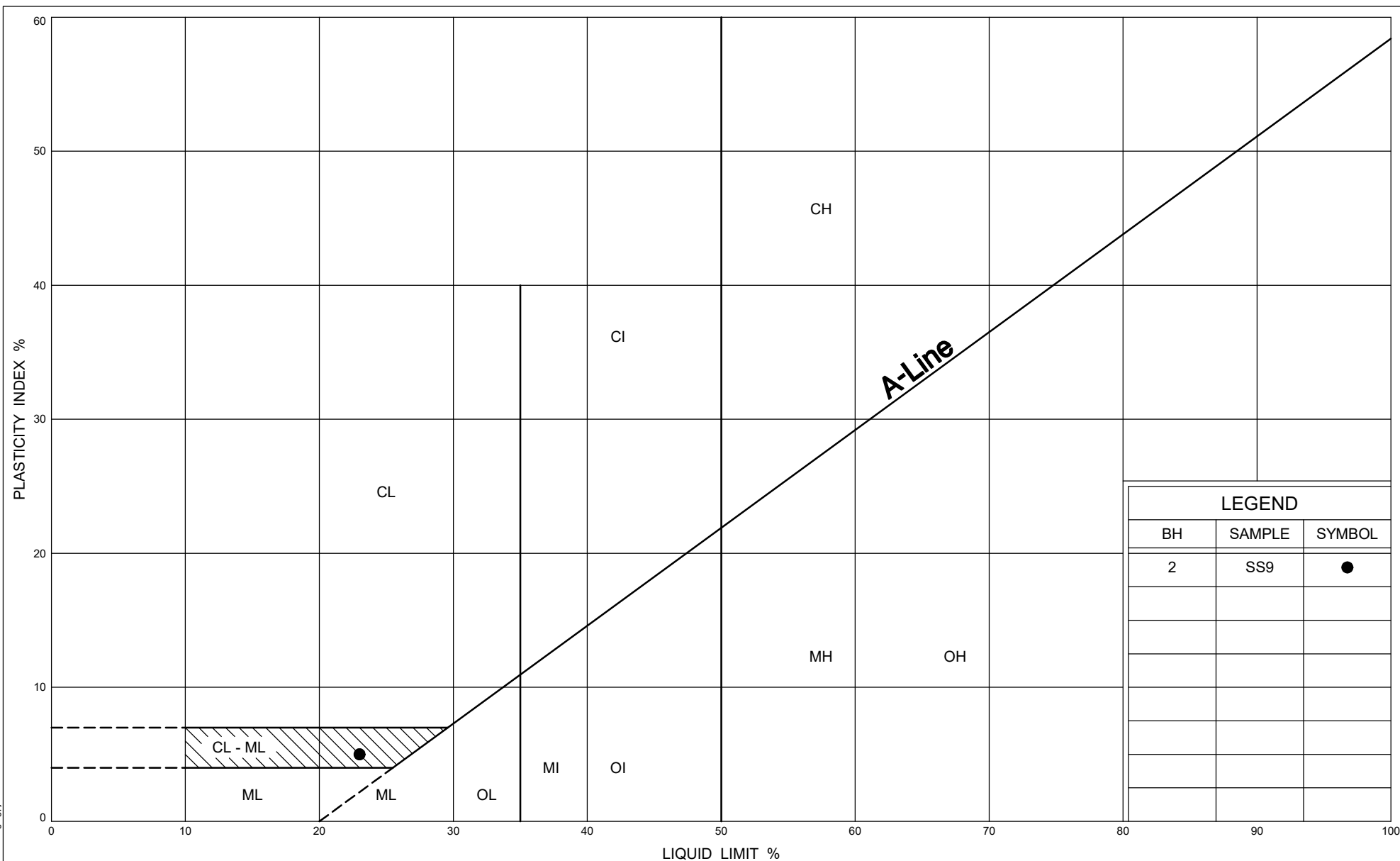
Prepared By : SD
Checked By : RA

UNIFIED SOIL CLASSIFICATION SYSTEM



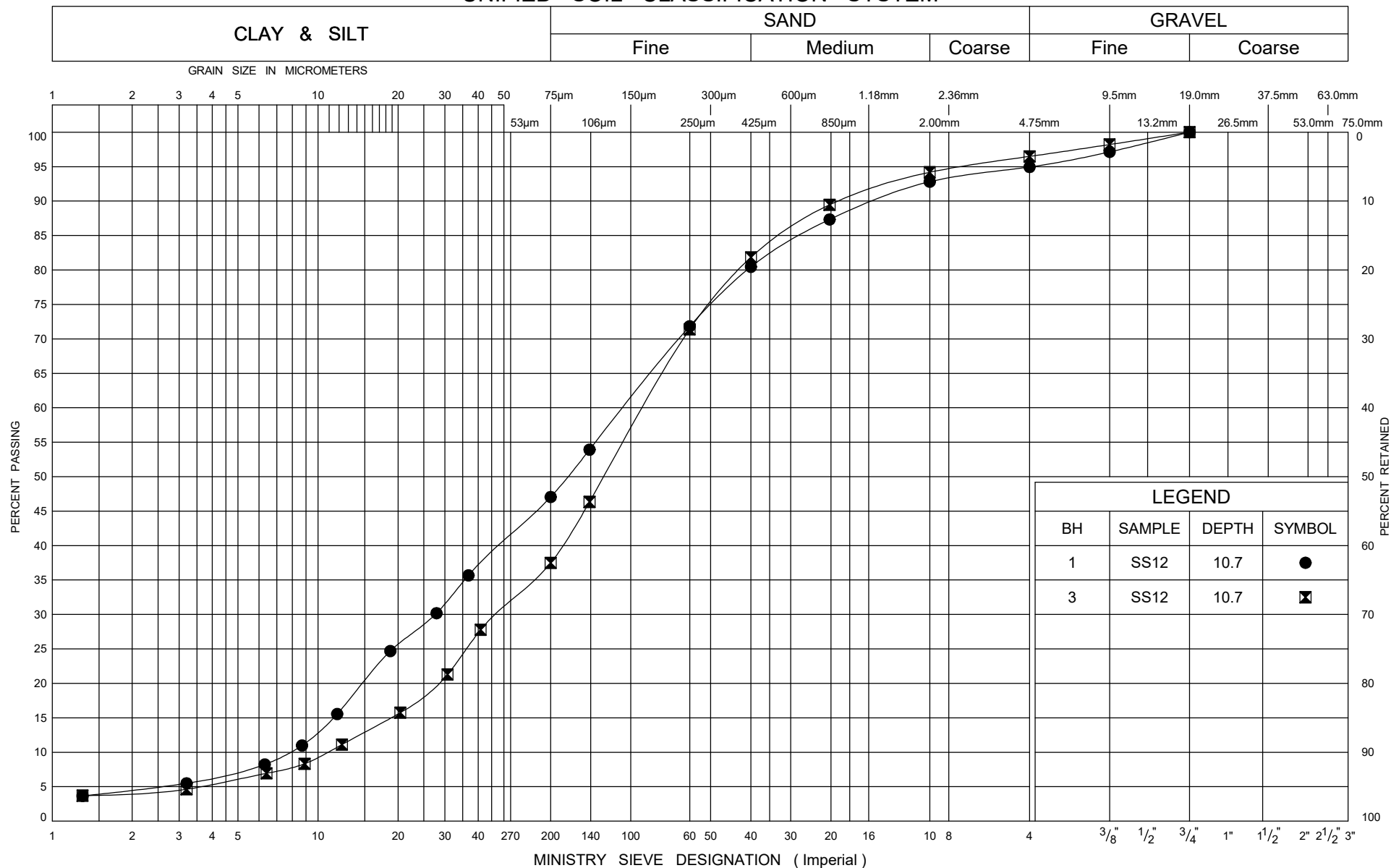
UNIFIED SOIL CLASSIFICATION SYSTEM





file: 1-15-0509-01 deception creek bh logs.gpj

UNIFIED SOIL CLASSIFICATION SYSTEM



PHOTOGRAPH OF COBBLES AND BOULDERS

FIGURE B16

NEW LISKEARD AREA

Deception Creek Bridge

Borehole No.1



Z:\1-Project Files\2015\1-15-0509 -New Liskeard Area, MTO Northern Region\01-Preliminary FID\2 Deception Creek Bridge\B_Photos\1-15-0509-1 Sept-22-2015 (Rock Cores)\Rock Photos.xls

Project No. : 1-15-0509

Date : August, 2016

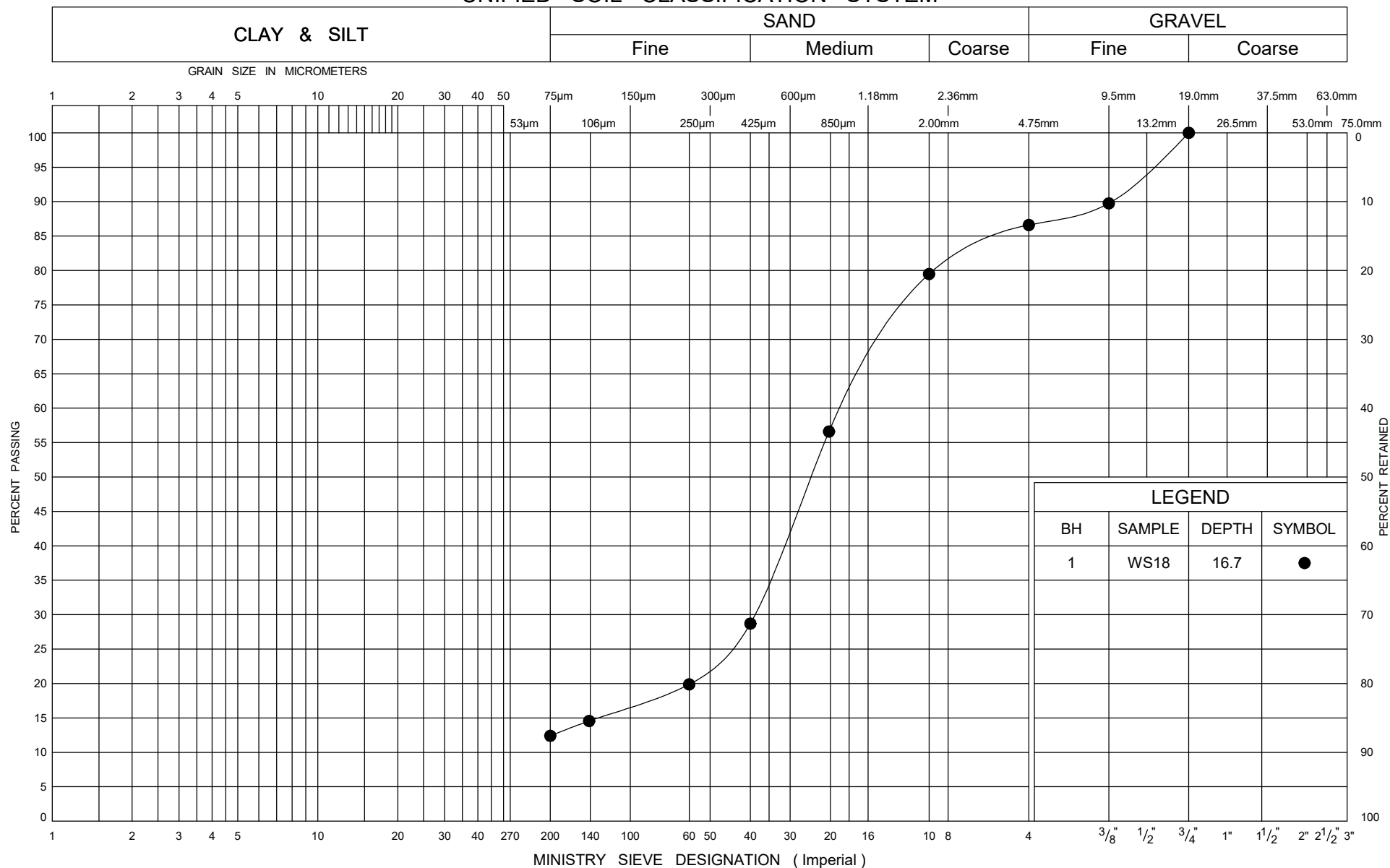


Terraprobe Inc.

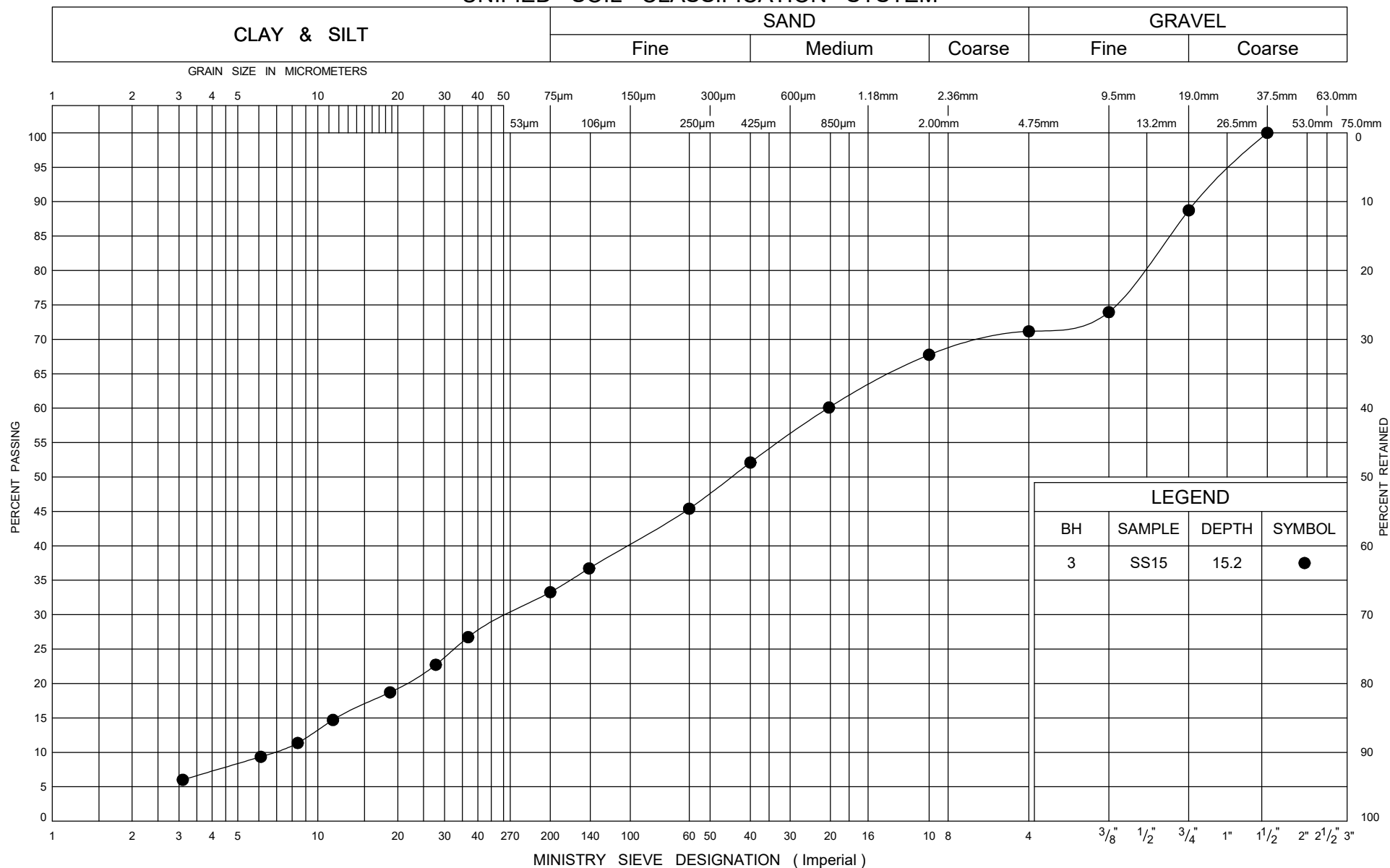
Prepared by : SD

Checked by : RA

UNIFIED SOIL CLASSIFICATION SYSTEM



UNIFIED SOIL CLASSIFICATION SYSTEM



PHOTOGRAPHS OF BEDROCK CORE SAMPLES

FIGURE B19

NEW LISKEARD AREA

Deception Creek Bridge

Borehole No.1



Borehole No.1



Project No. : 1-15-0509

Date : August, 2016



Prepared by : SD

Checked by : RA

PHOTOGRAPHS OF BEDROCK CORE SAMPLES

FIGURE B20

NEW LISKEARD AREA

Deception Creek Bridge

Borehole No.2



Borehole No.2



Project No. : 1-15-0509

Date : August, 2016



Prepared by : SD

Checked by : RA

PHOTOGRAPHS OF BEDROCK CORE SAMPLES

FIGURE B21

NEW LISKEARD AREA

Deception Creek Bridge

Borehole No.2



Z:\1-Project Files\2015\1-15-0509 -New Liskeard Area, MTO Northern Region\01-Preliminary FID\2 Deception Creek Bridge\B_Photos\1-15-0509-1 Sept-22-2015 (Rock Cores)\Rock Photos.xls

Project No. : 1-15-0509

Date : August, 2016



Prepared by : SD

Checked by : RA

PHOTOGRAPHS OF BEDROCK CORE SAMPLES

FIGURE B22

NEW LISKEARD AREA

Deception Creek Bridge

Borehole No.3



Z:\1-Project Files\2015\1-15-0509 -New Liskeard Area, MTO Northern Region\01-Preliminary FID\2 Deception Creek Bridge\B. Photos\1-15-0509-1 Sept-22-2015 (Rock Cores)\Rock Photos.xls

Project No. : 1-15-0509

Date : August, 2016



Prepared by : SD

Checked by : RA