

METRIC
DIMENSIONS ARE IN METRES AND/OR
MILLIMETRES UNLESS OTHERWISE SHOWN.
STATIONS IN KILOMETRES + METRES.

CONT No.
WP No. 5150-08-01

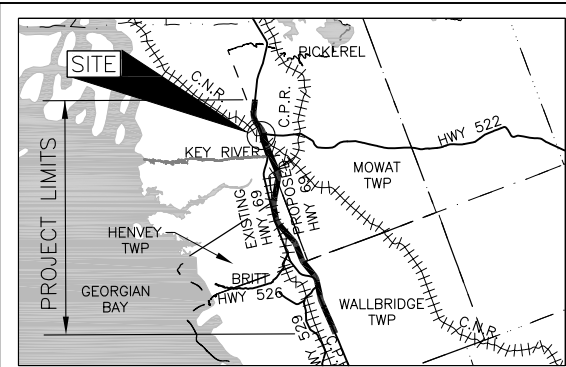


HIGHWAY 69
CNR OVERHEAD SBL APPROACHES
BOREHOLE LOCATIONS
AND SOIL STRATA

SHEET



Golder Associates Ltd.
MISSISSAUGA, ONTARIO, CANADA



KEY PLAN



SCALE
0 6 12 km

LEGEND

- Borehole - Current Investigation
- ⊕ Borehole - Previous Investigation (TROW)
- ⊕ Dynamic Cone Penetration Test
- ⊕ Seal
- ⊕ Piezometer
- N Standard Penetration Test Value
- 16 Blows/0.3m unless otherwise stated (Std. Pen. Test, 475 j/blow)
- ≡ WL upon completion of drilling
- R Refusal
- 100% Rock Quality Designation (RQD)

NOTES

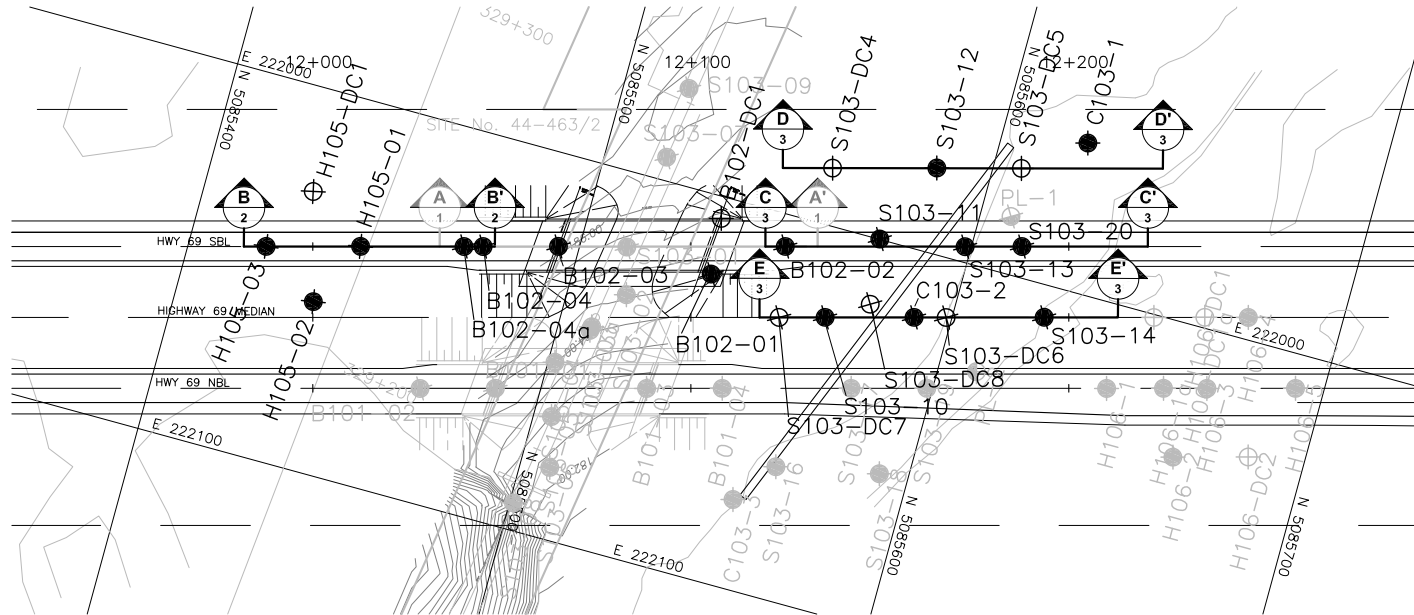
This drawing is for subsurface information only. The proposed structure details/works are shown for illustration purposes only and may not be consistent with the final design configuration as shown elsewhere in the Contracts Documents.

The boundaries between soil strata have been established only at borehole locations. Between boreholes the boundaries are assumed from geological evidence.

The complete Foundation Investigation and Design Report for this project and other related documents may be examined at the Materials Engineering and Research Office, Downsview. Information contained in this report and related documents is specifically excluded in accordance with Section GC 2.01 of OPS General Conditions.

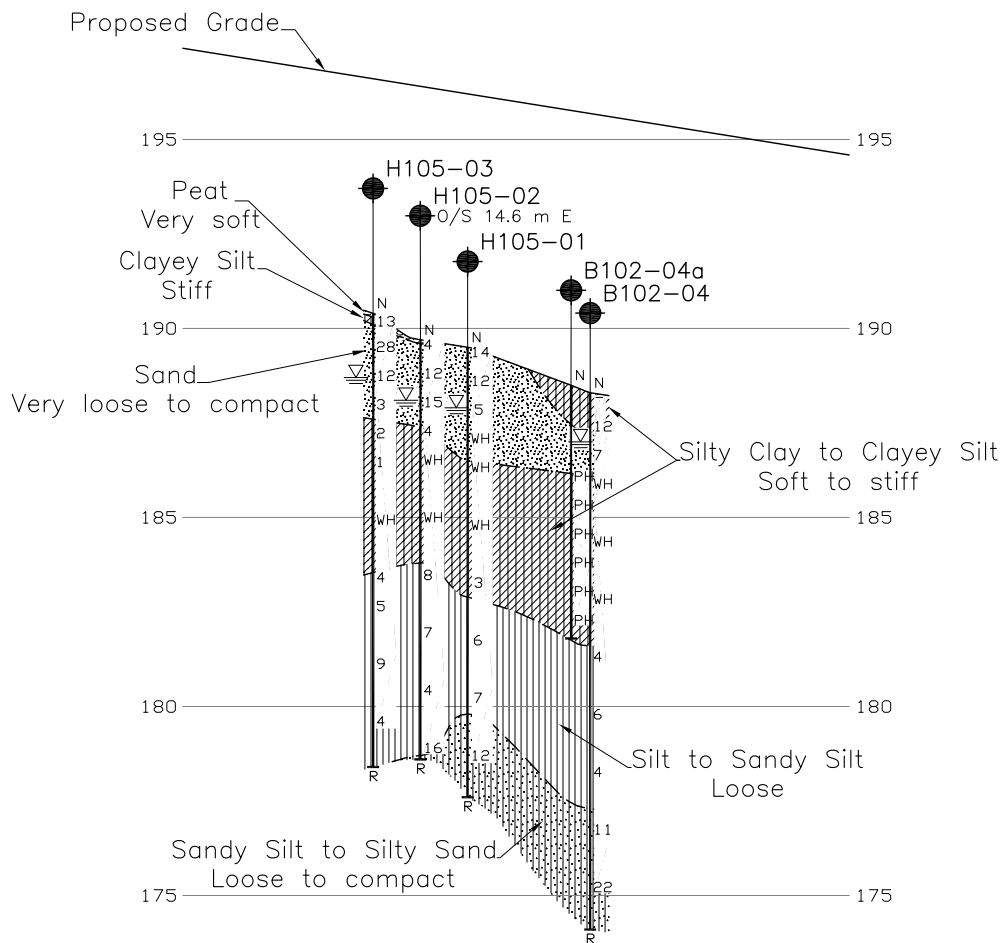
REFERENCE

Base plans provided in digital format by URS, drawing file nos. Hwy69_Plan_CNR Sept22.dwg, received SEPT 22, 2010. Keyplan provided in digital format by URS, drawing file nos. Keyplan (GOLDER 20100422).dwg, received APR 16, 2010. 01-Hwy 69CNR_SBL_ga.dwg, received JAN 24, 2011



PLAN

SCALE
20 0 20 40 m



B-B' SOUTH APPROACH CENTRELINE PROFILE

HORIZONTAL SCALE
20 0 20 40 m
VERTICAL SCALE
2 0 2 4 m

BOREHOLE CO-ORDINATES			
No.	ELEVATION	NORTHING	EASTING
B102-01	184.4	5085535.5	222020.6
B102-02	184.1	5085552.5	222008.4
B102-03	185.8	5085494.6	222024.2
B102-04	188.3	5085475.4	222029.5
B102-04a	188.5	5085470.5	222030.8
C103-1	182.3	5085622.5	221960.9
C103-2	181.8	5085590.3	222017.5
H105-01	189.5	5085444.1	222038.0
H105-02	189.7	5085435.9	222055.4
H105-03	190.4	5085420.0	222044.6
S103-10	182.4	5085567.6	222023.7
S103-11	182.2	5085576.1	221999.9
S103-12	182.1	5085585.7	221977.8
S103-13	182.1	5085598.4	221995.9
S103-14	182.1	5085623.5	222008.4
S103-20	182.0	5085612.9	221991.9
B102-DC1	185.4	5085534.2	222005.7
H105-DC1	190.7	5085428.2	222027.3
S103-DC4	184.3	5085559.1	221985.1
S103-DC5	182.0	5085607.3	221972.0
S103-DC6	182.3	5085598.5	222015.3
S103-DC7	182.2	5085555.9	222026.9
S103-DC8	182.3	5085578.2	222017.2



NO.	DATE	BY	REVISION
Geocres No. 41H-95			
HWY. 69	PROJECT NO. 09-1111-6014		DIST.
SUBM'D. GA	CHKD. SEMC	DATE: AUG 2011	SITE: 44-463/2
DRAWN: JJJ	CHKD.	APPD. JMAC	DWG. 2