

**METRIC**  
 DIMENSIONS ARE IN METRES AND/OR  
 MILLIMETRES UNLESS OTHERWISE SHOWN.  
 STATIONS IN KILOMETRES + METRES.

CONT No.  
 GWP No. 2131-01-00

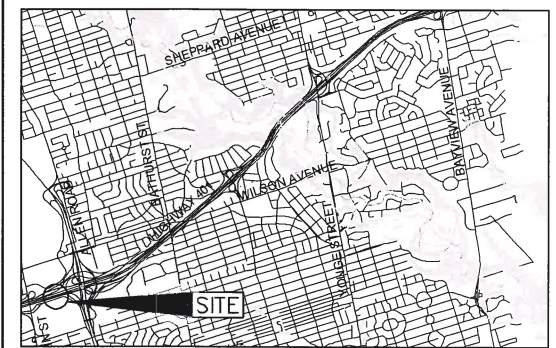
HIGHWAY 401 EBC REHABILITATION  
 CONTRACT 1 - OHS #2  
 BOREHOLE LOCATIONS



SHEET



**Golder Associates Ltd.**  
 MISSISSAUGA, ONTARIO, CANADA



BOREHOLE CO-ORDINATES			
No.	ELEVATION	NORTHING	EASTING
78-103	188.5	4843310.3	308624.7
78-107	188.5	4843221.4	308724.5



**NOTES**

This drawing is for subsurface information only. The proposed structure details/works are shown for illustration purposes only and may not be consistent with the final design configuration as shown elsewhere in the Contracts Documents.

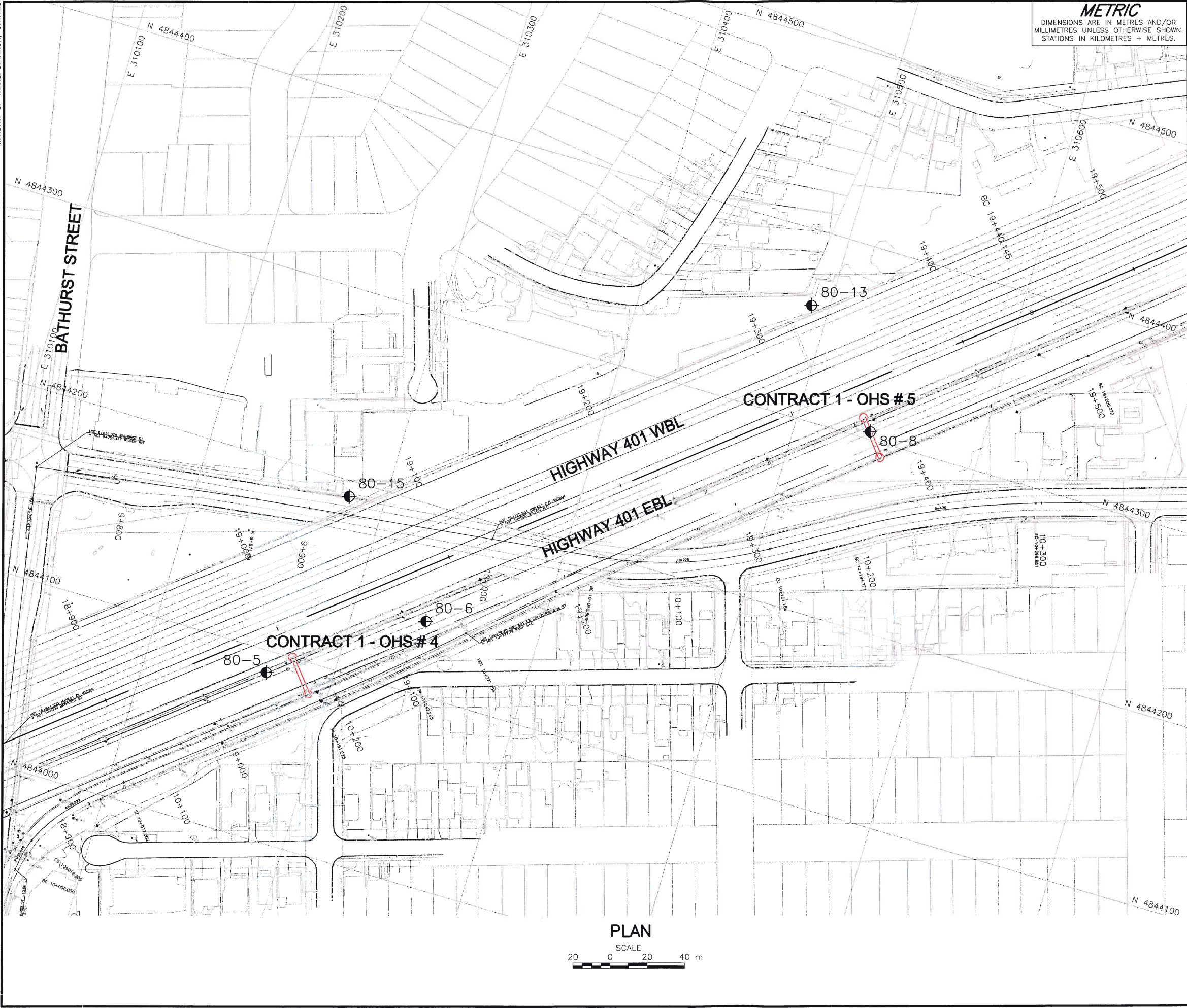
The complete Foundation Investigation and Design Report for this project and other related documents may be examined at the Materials Engineering and Research Office, Downsview. Information contained in this report and related documents is specifically excluded in accordance with Section GC 2.01 of OPS General Conditions.

**REFERENCE**


Base plans provided in digital format by URS, drawing file names:  
 Hwy401\_alignment.dwg, Hwy401\_bgd.dwg, Hwy401\_plan.dwg,  
 Hwy401\_x\_pavmarkings.dwg and Hwy401\_contours.dwg, received  
 August 3, 2011 and August 10, 2011.

NO.	DATE	BY	REVISION
Geocres No. 30M11-247			
HWY. 401	PROJECT NO. 09-1111-6007		DIST. Central
SUBM'D. NK	CHKD. KJB	DATE: Feb. 28, 2013	SITE:
DRAWN: JFC	CHKD. NK	APPD. JMAG	DWG. 1



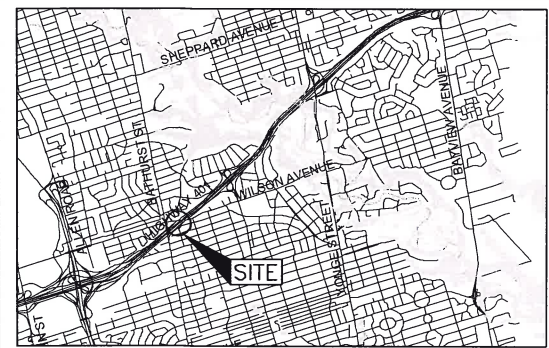




**METRIC**  
DIMENSIONS ARE IN METRES AND/OR  
MILLIMETRES UNLESS OTHERWISE SHOWN.  
STATIONS IN KILOMETRES + METRES.

<b>CONT No.</b> <b>GWP No. 2131-01-00</b>		
<b>HIGHWAY 401 EBC REHABILITATION</b>		
CONTRACT 1 - OHS #4 AND #5 <b>BOREHOLE LOCATIONS</b>		

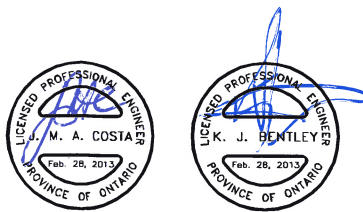


**Golder Associates Ltd.**  
MISSISSAUGA, ONTARIO, CANADA



LEGEND	
	Approximate Borehole Location - Previous Investigation (Geocres No. 30M11-080)
	Proposed Overhead Sign Structure

BOREHOLE CO-ORDINATES			
No.	ELEVATION	NORTHING	EASTING
80-5	183.9	4844088.5	310264.9
80-6	183.6	4844139.1	310339.6
80-8	181.7	4844304.1	310540.2
80-13	181.1	4844360.3	310490.6
80-15	183.8	4844191.6	310280.7

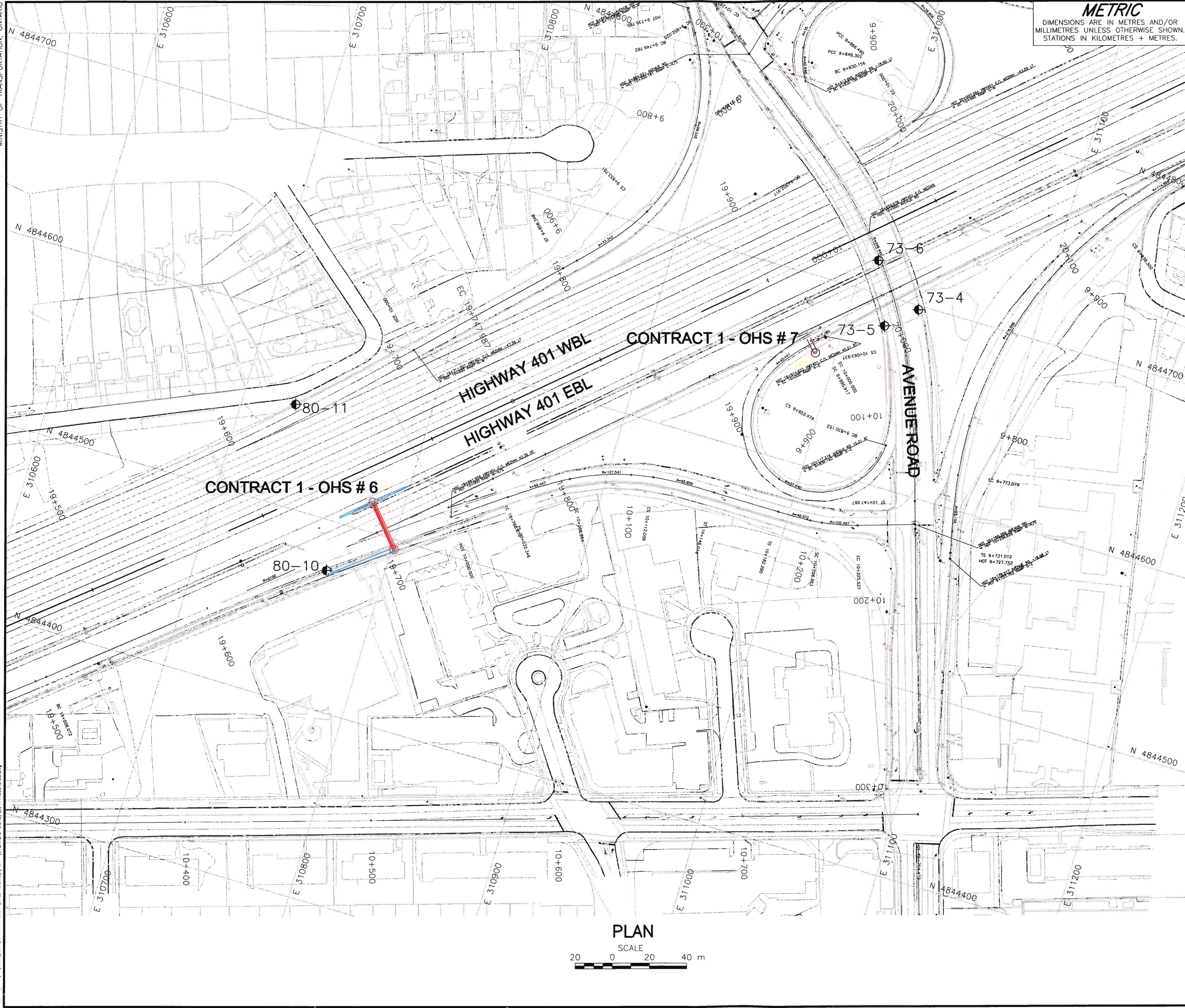


**NOTES**  
This drawing is for subsurface information only. The proposed structure details/works are shown for illustration purposes only and may not be consistent with the final design configuration as shown elsewhere in the Contracts Documents.  
  
The complete Foundation Investigation and Design Report for this project and other related documents may be examined at the Materials Engineering and Research Office, Downsview. Information contained in this report and related documents is specifically excluded in accordance with Section GC 2.01 of OPS General Conditions.

**REFERENCE**  
Base plans provided in digital format by URS, drawing file names.  
Hwy401\_alignment.dwg, Hwy401\_bgd.dwg, Hwy401\_plan.dwg,  
Hwy401\_x\_povmarkings.dwg and Hwy401\_contours.dwg, received August 3, 2011 and August 10, 2011.

NO.	DATE	BY	REVISION
Geocres No. 30M11-247			
HWY. 401		PROJECT NO. 09-1111-6007	
SUBM'D. NK		CHKD. KJB	DATE: Feb.28, 2013
DRAWN: JFC		CHKD. NK	APPD. JMAC
		DIST. Central	
		SITE:	
		DWG. 2	





**METRIC**  
DIMENSIONS ARE IN METRES AND/OR  
MILLIMETRES UNLESS OTHERWISE SHOWN.  
STATIONS IN KILOMETRES + METRES.

CONT No.  
GWP No. 2131-01-00

HIGHWAY 401 EBC REHABILITATION  
CONTRACT 1 - OHS #6 AND #7  
BOREHOLE LOCATIONS

SHEET

**Golder Associates**

**Golder Associates Ltd.**  
MISSISSAUGA, ONTARIO, CANADA

KEY PLAN  
SCALE  
1 0 1 2 km

LEGEND

Approximate Borehole Location - Previous Investigation (Geocres No. 30M11-073 and 30M11-080)

Proposed Overhead Sign Structure

BOREHOLE CO-ORDINATES			
No.	ELEVATION	NORTHING	EASTING
73-4	184.1	4844697.8	311036.3
73-5	180.2	4844684.3	311021.0
73-6	178.4	4844717.1	311008.0
80-10	179.4	4844473.6	310769.9
80-11	181.5	4844554.4	310728.6

NOTES

This drawing is for subsurface information only. The proposed structure details/works are shown for illustration purposes only and may not be consistent with the final design configuration as shown elsewhere in the Contracts Documents.

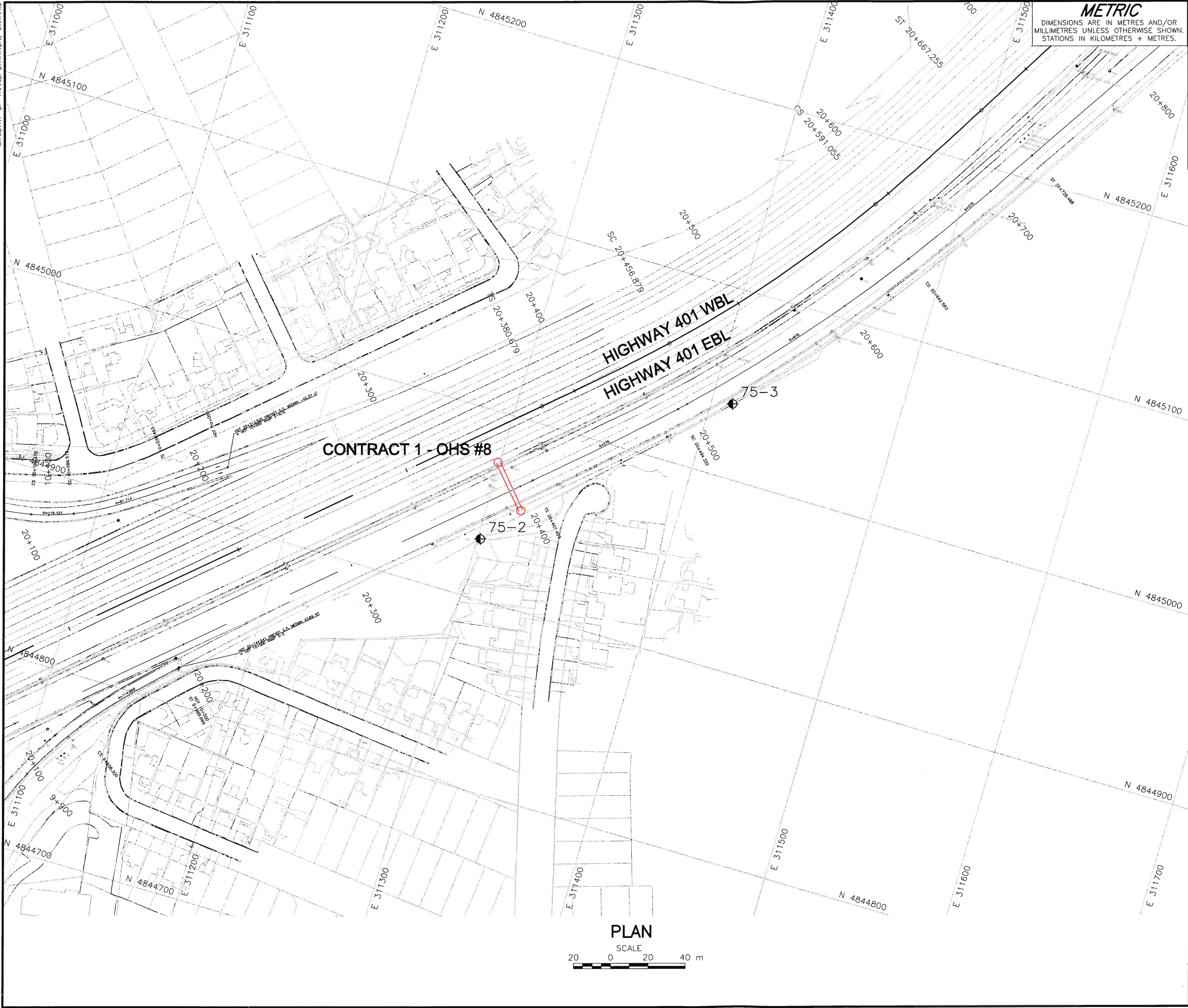
The complete Foundation Investigation and Design Report for this project and other related documents may be examined at the Materials Engineering and Research Office, Downsview. Information contained in this report and related documents is specifically excluded in accordance with Section GC 2.01 of OPS General Conditions.

REFERENCE

Base plans provided in digital format by URS, drawing file names: Hwy401\_alignment.dwg, Hwy401\_bgd.dwg, Hwy401\_plan.dwg, Hwy401\_x\_povmarkings.dwg and Hwy401\_contours.dwg, received August 3, 2011 and August 10, 2011.

NO.	DATE	BY	REVISION
Geocres No. 30M11-247			
HWY. 401		PROJECT NO. 09-1111-6007	
SUBM'D. NK		CHKD. KJB	
DRAWN: JFC		APPD. JMAG	
DATE: Feb. 28, 2013		SITE:	
DIST. Central		DWG. 3	



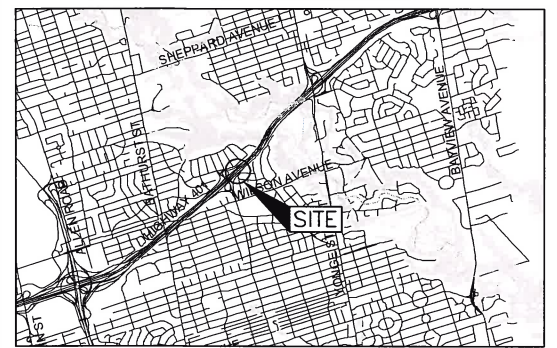


**METRIC**  
 DIMENSIONS ARE IN METRES AND/OR  
 MILLIMETRES UNLESS OTHERWISE SHOWN.  
 STATIONS IN KILOMETRES + METRES.

CONT No. GWP No. 2131-01-00		
HIGHWAY 401 EBC REHABILITATION		
CONTRACT 1 - OHS #8		
BOREHOLE LOCATIONS		SHEET



**Golder Associates Ltd.**  
 MISSISSAUGA, ONTARIO, CANADA



LEGEND	
	Approximate Borehole Location - Previous Investigation (Geocres No. 30M11-075)
	Proposed Overhead Sign Structure

BOREHOLE CO-ORDINATES			
No.	ELEVATION	NORTHING	EASTING
75-2	178.6	4844931.6	311301.7
75-3	175.9	4845039.5	311411.5



**NOTES**

This drawing is for subsurface information only. The proposed structure details/works are shown for illustration purposes only and may not be consistent with the final design configuration as shown elsewhere in the Contracts Documents.

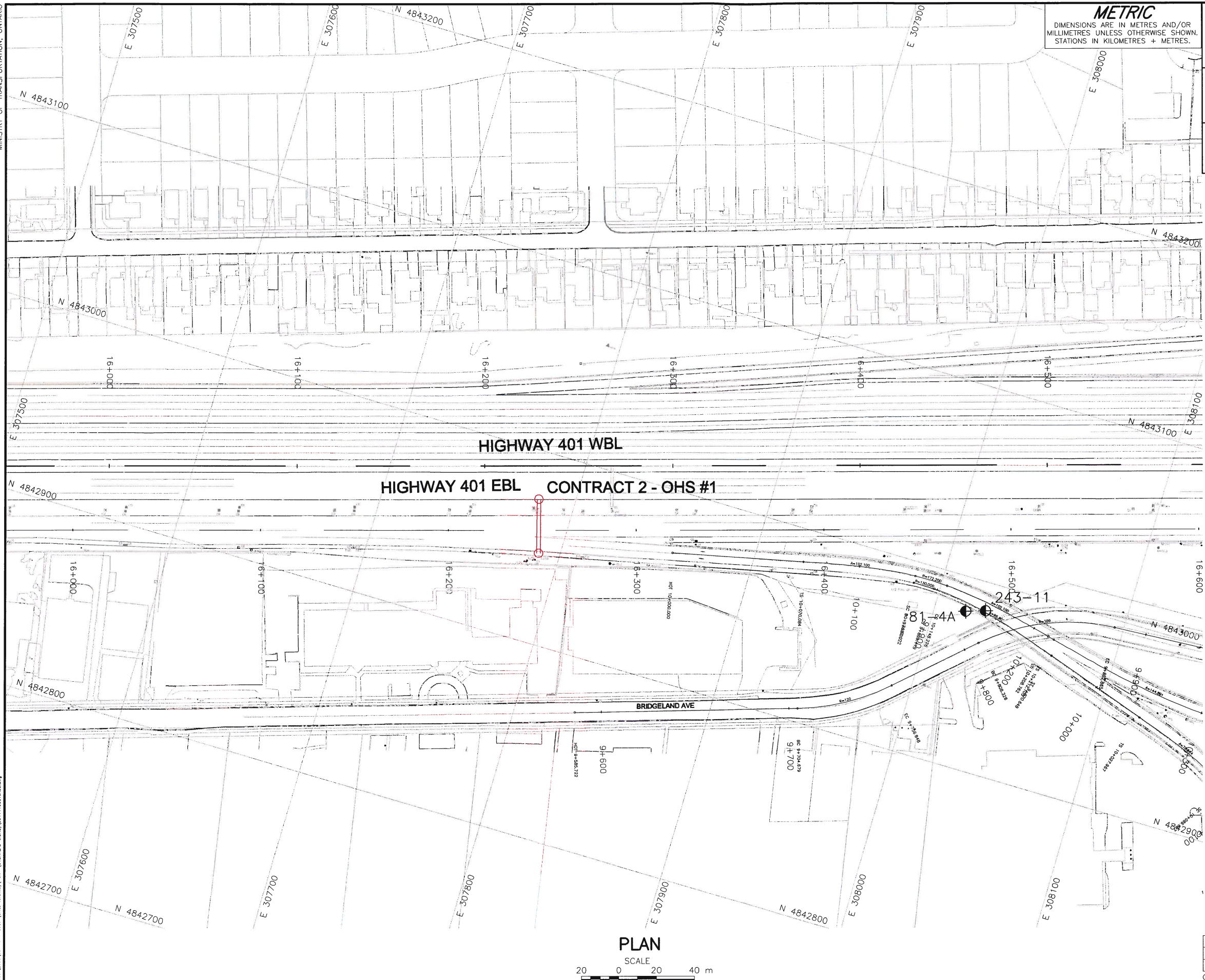
The complete Foundation Investigation and Design Report for this project and other related documents may be examined at the Materials Engineering and Research Office, Downsview. Information contained in this report and related documents is specifically excluded in accordance with Section GC 2.01 of OPS General Conditions.

**REFERENCE**

Base plans provided in digital format by URS, drawing file names:  
 Hwy401\_alignment.dwg, Hwy401\_bgd.dwg, Hwy401\_plan.dwg,  
 Hwy401\_x\_povmarkings.dwg and Hwy401\_contours.dwg, received  
 August 3, 2011 and August 10, 2011.

NO.	DATE	BY	REVISION
Geocres No. 30M11-247			
HWY. 401		PROJECT NO. 09-1111-6007 DIST. Central	
SUBM'D. NK	CHKD. KJB	DATE: Feb. 28, 2013	SITE:
DRAWN: JFC	CHKD. NK	APPD. JMAC	DWG. 4



CONT No.  
GWP No. 2131-01-00HIGHWAY 401 EBC REHABILITATION  
CONTRACT 2 - OHS #1  
BOREHOLE LOCATIONS

SHEET

**Golder Associates Ltd.**  
MISSISSAUGA, ONTARIO, CANADA

KEY PLAN

SCALE  
1 0 1 2 km

## LEGEND

- Approximate Borehole Location - Previous Investigation (Geocres No.'s 30M11-081 and 30M11-243).
- Proposed Overhead Sign Structure

## BOREHOLE CO-ORDINATES

No.	ELEVATION	NORTHING	EASTING
81-4A	191.0	4842981.9	308016.6
243-11	192.5	4842985.1	308026.6



## NOTES

This drawing is for subsurface information only. The proposed structure details/works are shown for illustration purposes only and may not be consistent with the final design configuration as shown elsewhere in the Contracts Documents.

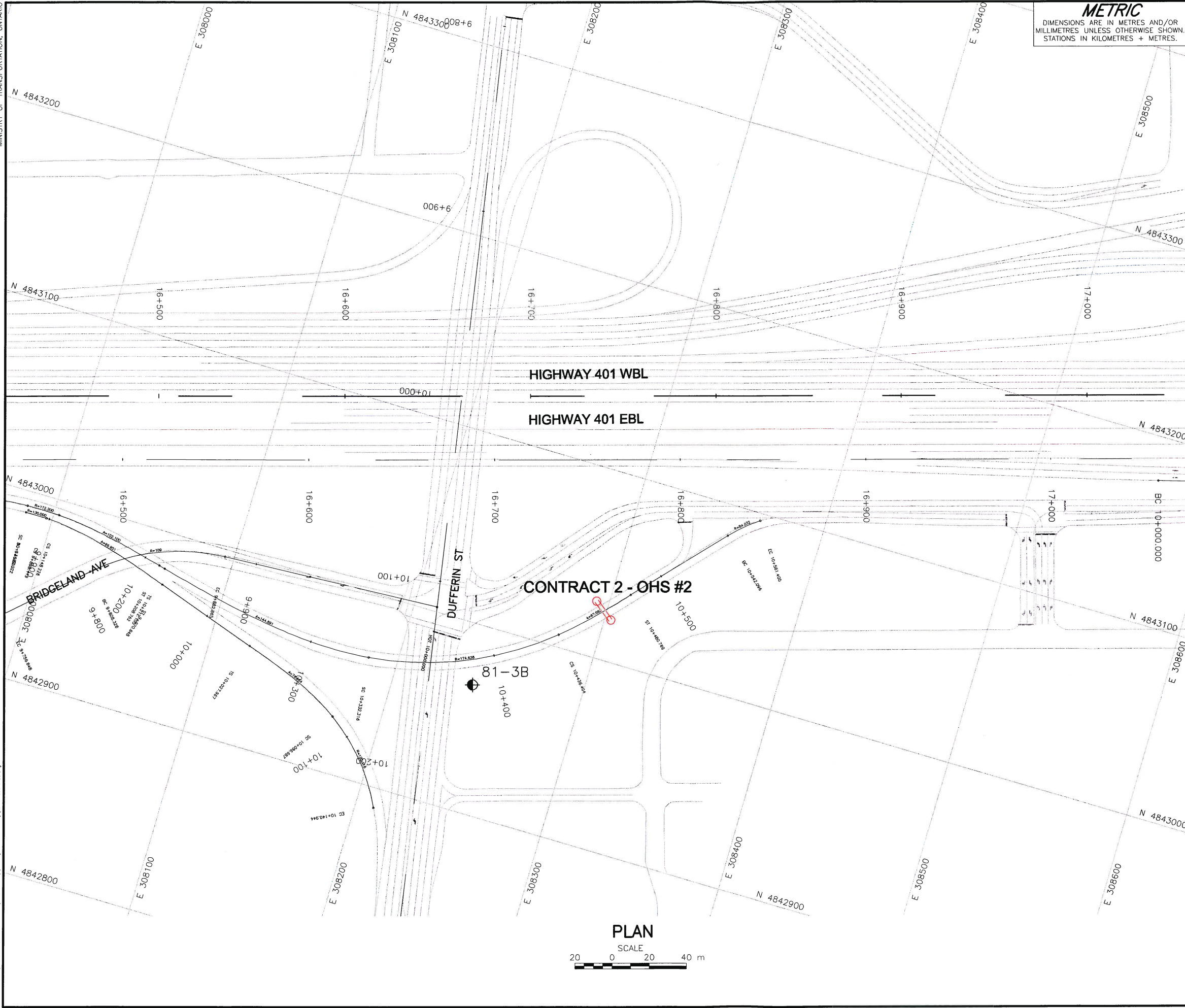
The complete Foundation Investigation and Design Report for this project and other related documents may be examined at the Materials Engineering and Research Office, Downsview. Information contained in this report and related documents is specifically excluded in accordance with Section GC 2.01 of OPS General Conditions.

## REFERENCE

Base plans provided in digital format by URS, drawing file names: Hwy401\_alignment.dwg, Hwy401\_bgd.dwg, Hwy401\_plan.dwg, Hwy401\_x\_povmarkings.dwg and Hwy401\_contours.dwg, received August 3, 2011 and August 10, 2011.

NO.	DATE	BY	REVISION
Geocres No. 30M11-247			
HWY. 401	PROJECT NO. 09-1111-6007		
SUBM'D. NK	CHKD. KJB	DATE: Feb. 28, 2013	SITE:
DRAWN: JFC	CHKD. NK	APPD. JMAG	DWG. 5





**METRIC**  
DIMENSIONS ARE IN METRES AND/OR  
MILLIMETRES UNLESS OTHERWISE SHOWN.  
STATIONS IN KILOMETRES + METRES.

CONT No.  
GWP No. 2131-01-00

HIGHWAY 401 EBC REHABILITATION  
CONTRACT 2 - OHS #2  
BOREHOLE LOCATIONS

SHEET

**Golder Associates**

**Golder Associates Ltd.**  
MISSISSAUGA, ONTARIO, CANADA

LEGEND

Approximate Borehole Location - Previous Investigation (Geocres No. 30M11-081)

Proposed Overhead Sign Structure

BOREHOLE CO-ORDINATES			
No.	ELEVATION	NORTHING	EASTING
81-3B	189.0	4842967.8	308242.2

NOTES

This drawing is for subsurface information only. The proposed structure details/works are shown for illustration purposes only and may not be consistent with the final design configuration as shown elsewhere in the Contracts Documents.

The complete Foundation Investigation and Design Report for this project and other related documents may be examined at the Materials Engineering and Research Office, Downsview. Information contained in this report and related documents is specifically excluded in accordance with Section GC 2.01 of OPS General Conditions.

REFERENCE

Base plans provided in digital format by URS, drawing file names: Hwy401\_alignment.dwg, Hwy401\_bgd.dwg, Hwy401\_plan.dwg, Hwy401\_x\_povmarkings.dwg and Hwy401\_contours.dwg, received August 3, 2011 and August 10, 2011.

NO.	DATE	BY	REVISION
Geocres No. 30M11-247			
HWY. 401		PROJECT NO. 09-1111-6007	
SUBM'D. NK		DATE: Feb. 28, 2013	
DRAWN: JFC		DWG. 6	