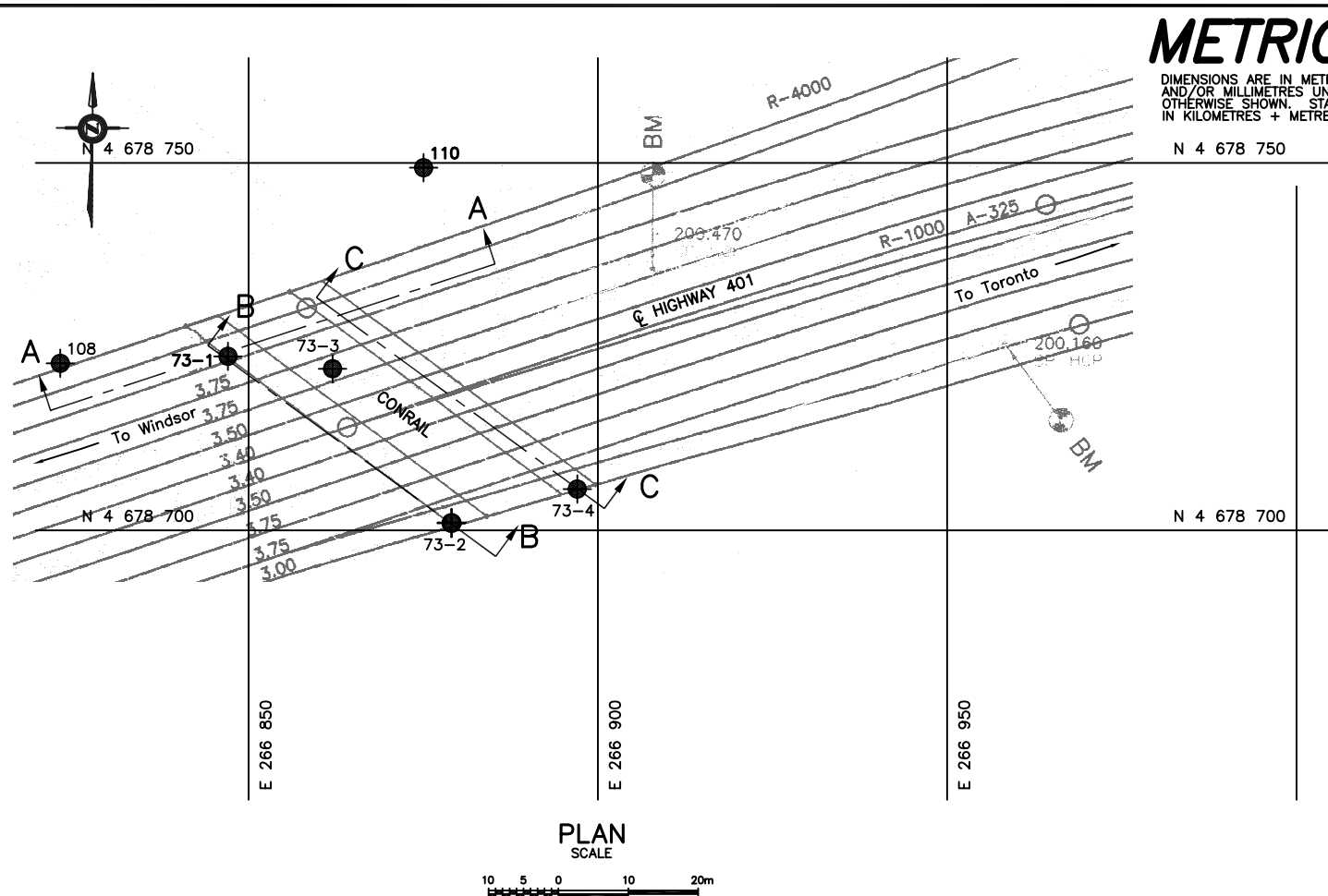
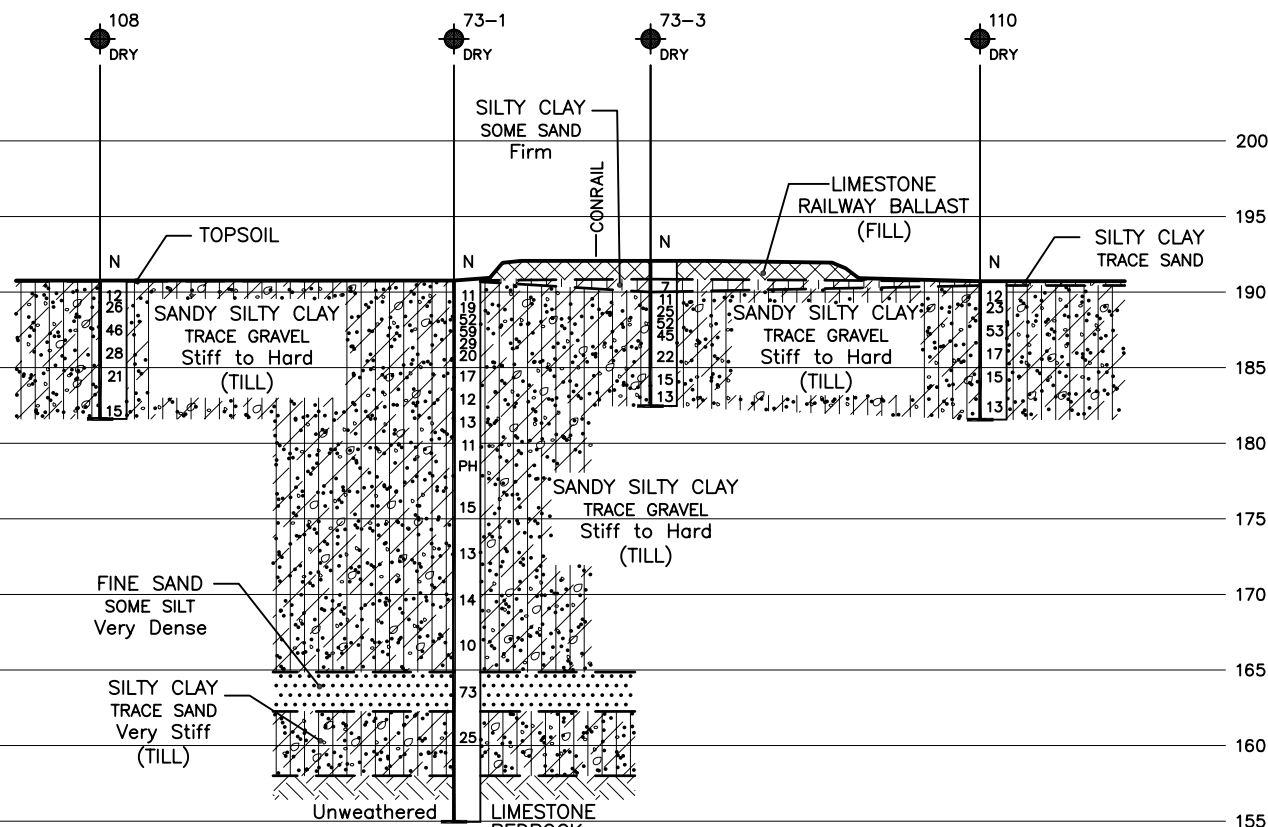


NOTE:
SECTIONS ARE PROVIDED SOLELY FOR ILLUSTRATIVE PURPOSES. REFER TO RECORD OF BOREHOLES FOR DETAILED DESCRIPTION OF SUBSURFACE CONDITIONS, IN-SITU TEST DATA AND LABORATORY TEST RESULTS.



SECTIONS
SCALE



A-A

REF No Survey Plan 2001 Site # 6-73, entitled Proposed Bridge Site at Conrail Railway and Highway 401, Prepared by Planning and Design Section, MTO.

METRIC

DIMENSIONS ARE IN METRES AND/OR MILLIMETRES UNLESS OTHERWISE SHOWN. STATIONS IN KILOMETRES + METRES

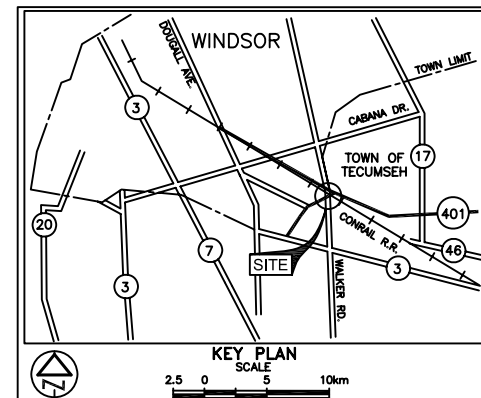
CONT No
GWP No 60-00-00

HIGHWAY 401
PROPOSED OVERPASS AT CONRAIL RAILWAY
BOREHOLE LOCATIONS & SOIL STRATA



SHEET

PMI Peto MacCallum Ltd.
CONSULTING ENGINEERS



LEGEND

- Borehole
- Dynamic Cone Penetration Test (Cone)
- Borehole & Cone
- N Blows/0.3m (Std. Pen Test, 475 J / blow)
- CONE Blows/0.3m (60° Cone, 475 J / blow)
- W L at time of investigation Feb 2002
- Head
- ARTESIAN WATER
- Encountered

BH No	ELEVATION	CO-ORDINATES	
		NORTH	EAST
73-1	190.76	4 678 747	266 847
73-2	190.96	4 678 723	266 879
73-3	192.06	4 678 745	266 862
73-4	192.12	4 678 728	266 897
108	190.76	4 678 746	266 823
110	190.71	4 678 774	266 875

— NOTE —

The boundaries between soil strata have been established only at Borehole locations. Between Boreholes the boundaries are assumed from geological evidence.

REVISIONS	DATE	BY	DESCRIPTION	
FEB.15/07	CN	ADJUSTED	BOREHOLE LOCATION 73-3 AS PER MTO REQUEST	

Geocres No. 40J2-47

HWY No	401	DIST	31
SUBM'D	GD	CHECKED	MRA
DATE	SEP 18, 2002	SITE	6-73
DRAWN	MM/NA	CHECKED	BRG
APPROVED	DWK	DWG	1