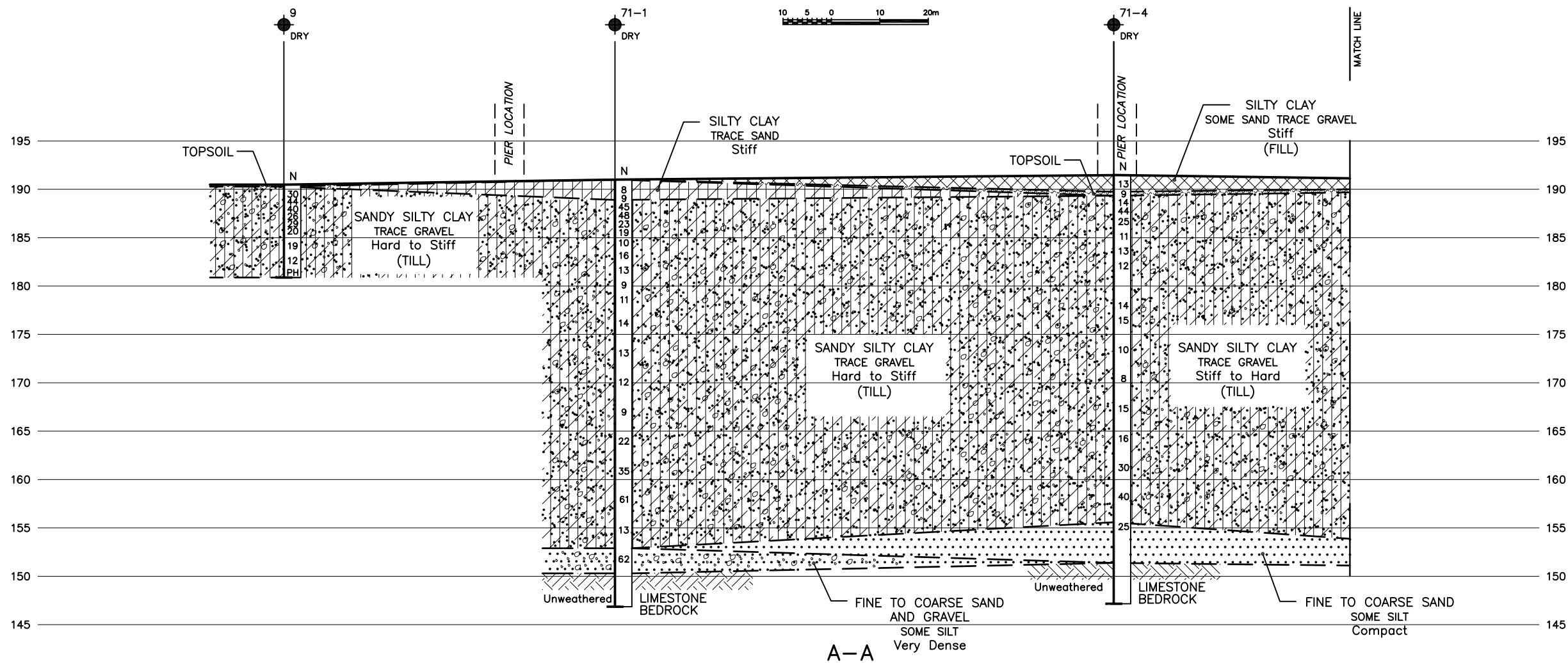


PLAN
SCALE



NOTES:

1. REFER TO DRAWING 2 FOR SECTION A-A CONTINUED, SECTIONS B-B, C-C, AND D-D.
2. SECTIONS ARE PROVIDED SOLELY FOR ILLUSTRATIVE PURPOSES. REFER TO RECORD OF BOREHOLES FOR DETAILED DESCRIPTION OF SUBSURFACE CONDITIONS, IN-SITU TEST DATA AND LABORATORY TEST RESULTS.

SECTION
SCALE

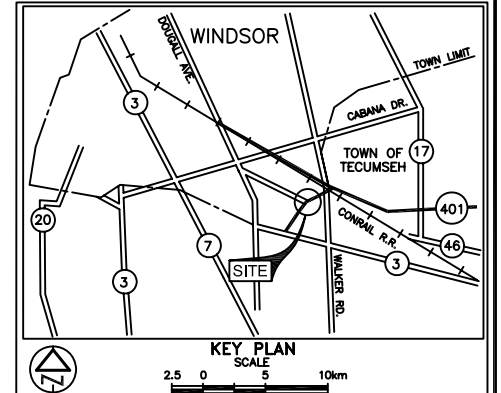


METRIC
DIMENSIONS ARE IN METRES
AND/OR MILLIMETRES UNLESS
OTHERWISE SHOWN. STATIONS
IN KILOMETRES + METRES

CONT No
GWP No 60-00-00
HIGHWAY 401
PROPOSED OVERPASS AT TUNNEL DIVERSION
BOREHOLE LOCATIONS & SOIL STRATA



PML Peto MacCallum Ltd.
CONSULTING ENGINEERS



LEGEND

- Borehole
- Dynamic Cone Penetration Test (Cone)
- Borehole & Cone
- N Blows/0.3m (Std. Pen Test, 475 J / blow)
- CONE Blows/0.3m (60° Cone, 475 J / blow)
- W L at time of investigation
Jan - Mar 2002
- Head
- ARTESIAN WATER
Encountered
- PIEZOMETER

BH No	ELEVATION	CO-ORDINATES	
		NORTH	EAST
71-1	191.00	4 678 425	265 959
71-2	191.38	4 678 409	265 921
71-3	191.47	4 678 422	266 015
71-4	191.46	4 678 407	266 012
71-5	190.49	4 678 430	266 082
71-6	191.65	4 678 413	266 080
9	190.48	4 678 440	265 927
10	190.32	4 678 450	266 105
11	190.56	4 678 412	266 112

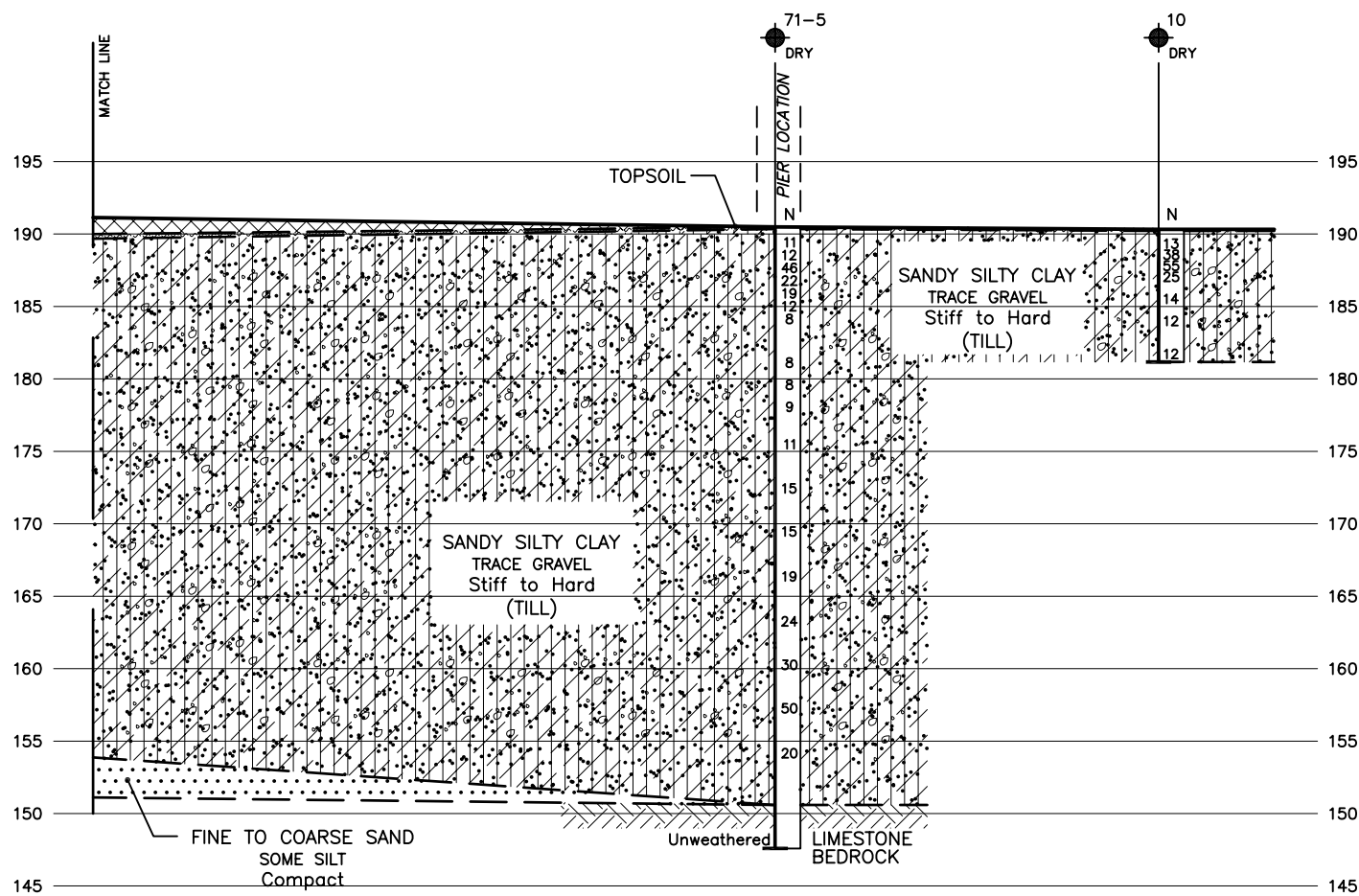
NOTE

The boundaries between soil strata have been established only at Borehole locations. Between Boreholes the boundaries are assumed from geological evidence.

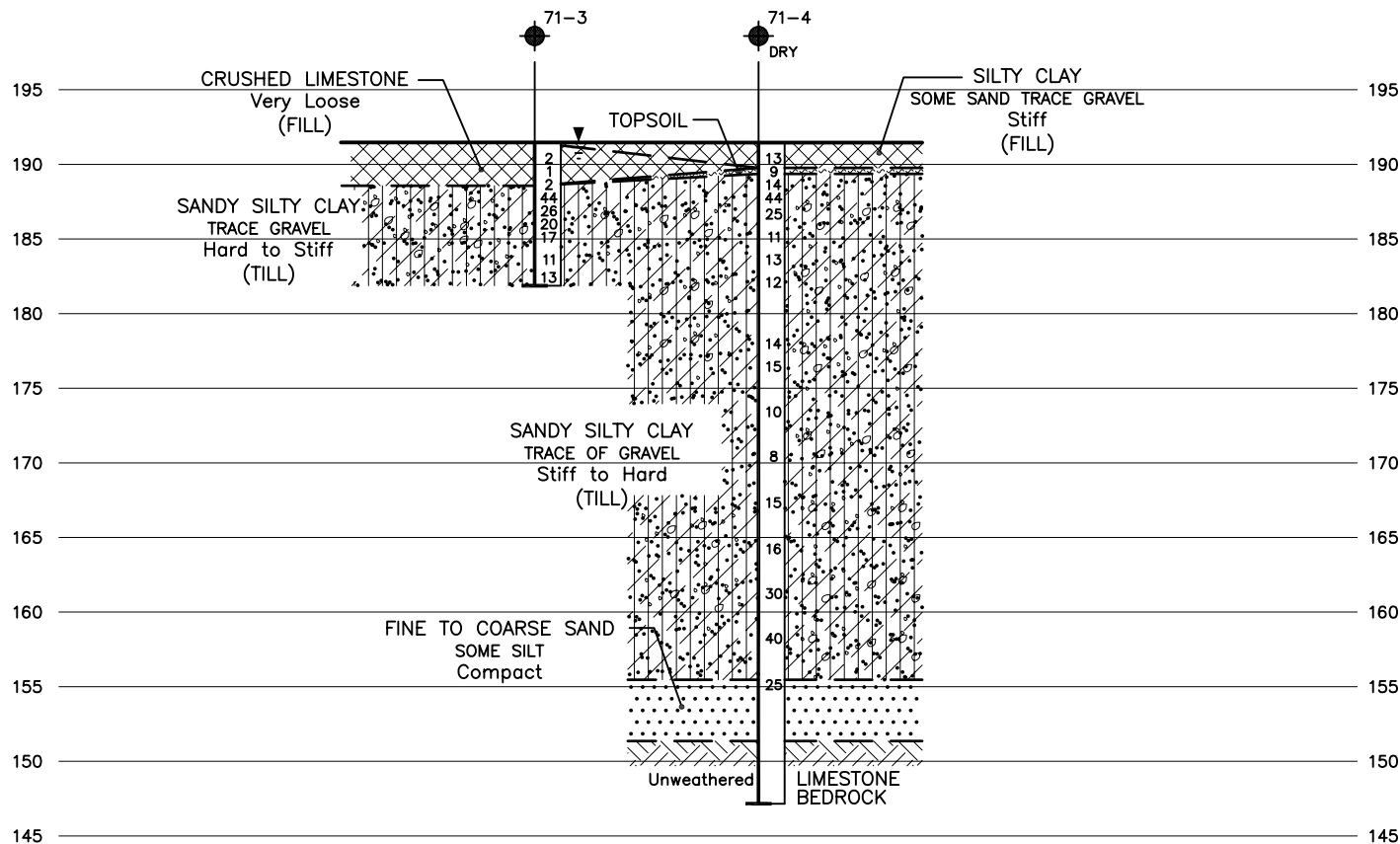
REVISIONS	DATE	BY	DESCRIPTION	
			DATE	DESCRIPTION
	FEB.15/07	CN	ADJUSTED BOREHOLES 71-2 AND 71-6 LOCATION AS PER MTO REQUEST	

Geocres No.	40J2-48		
HWY No	401	DIST	31
SUBM'D	GD	CHECKED	MRA
DATE	SEP 18, 2002	SITE	6-71
DRAWN	MM/NA	CHECKED	BRG
APPROVED	DWK	DWG	1

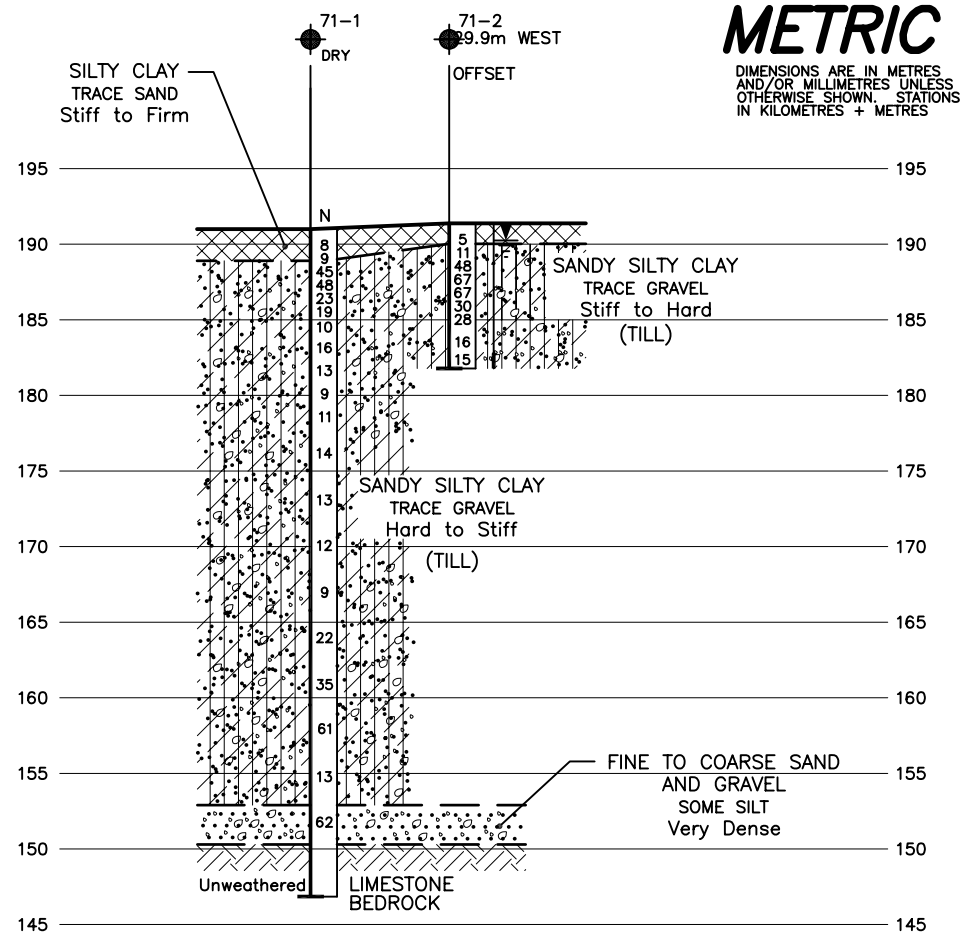
REF No Survey Plan 2001 Site # 6-71, entitled Proposed Bridge Site at Tunnel Diversion and Highway 401, Prepared by Planning and Design Section, MTO.



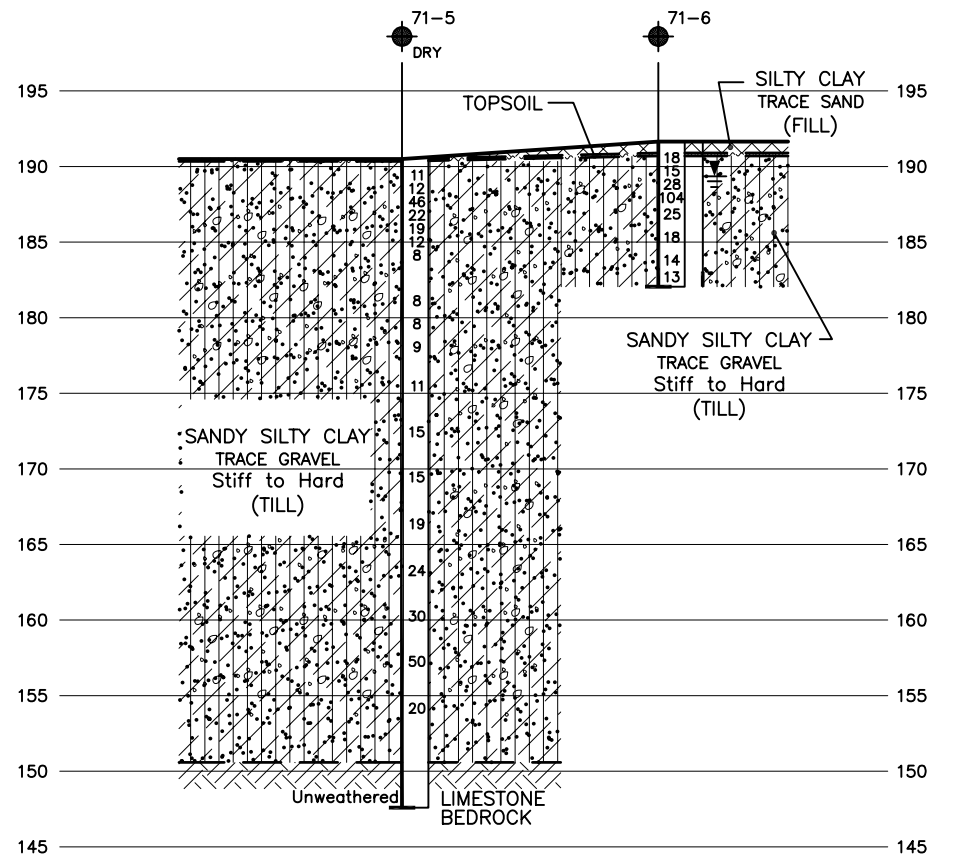
A-A (Continued)



C-C



B-B



D-D

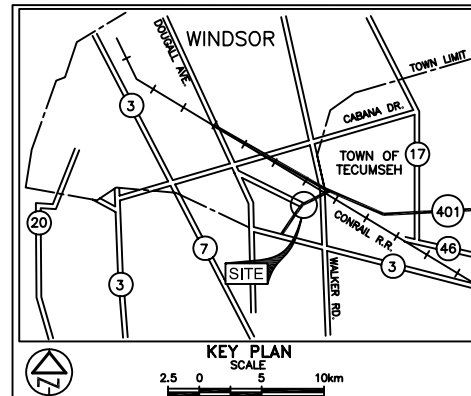
METRIC
DIMENSIONS ARE IN METRES
AND/OR MILLIMETRES UNLESS
OTHERWISE SHOWN. STATIONS
IN KILOMETRES + METRES

CONT No
GWP No 60-00-00

HIGHWAY 401
PROPOSED OVERPASS AT TUNNEL DIVERSION
BOREHOLE LOCATIONS & SOIL STRATA

SHEET

PML Peto MacCallum Ltd.
CONSULTING ENGINEERS



LEGEND

- Borehole
- Dynamic Cone Penetration Test (Cone)
- Borehole & Cone
- N Blows/0.3m (Std. Pen Test, 475 J / blow)
- CONE Blows/0.3m (60° Cone, 475 J / blow)
- W L at time of investigation Jan - Mar 2002
- Head
- ARTESIAN WATER Encountered
- PIEZOMETER

BH No	ELEVATION	CO—ORDINATES	
		NORTH	EAST
(Refer to drawing 1 for co—ordinates)			

NOTE

The boundaries between soil strata have been established only at Borehole locations. Between Boreholes the boundaries are assumed from geological evidence.

REVISIONS	ADJUSTED BOREHOLES 71-2 AND 71-6 LOCATION AS PER		
	DATE	BY	DESCRIPTION
	FEB.15/07	CN	MTO REQUEST

Geocres No. 40J2-48

HWY No	401	DIST	31
SUBM'D	GD	CHECKED	MRA
DRAWN	MM/NAI	CHECKED	BRG
DATE	SEP 18, 2002	APPROVED	DWK
SITE	6-71	DWG	2

NOTES:

- REFER TO DRAWING 1 FOR PLAN AND SECTION A-A.
- SECTIONS ARE PROVIDED SOLELY FOR ILLUSTRATIVE PURPOSES. REFER TO RECORD OF BOREHOLES FOR DETAILED DESCRIPTION OF SUBSURFACE CONDITIONS, IN-SITU TEST DATA AND LABORATORY TEST RESULTS.

SECTIONS
SCALE



REF No Survey Plan 2001 Site # 6-71, entitled Proposed Bridge Site at Tunnel Diversion and Highway 401, Prepared by Planning and Design Section, MTO.